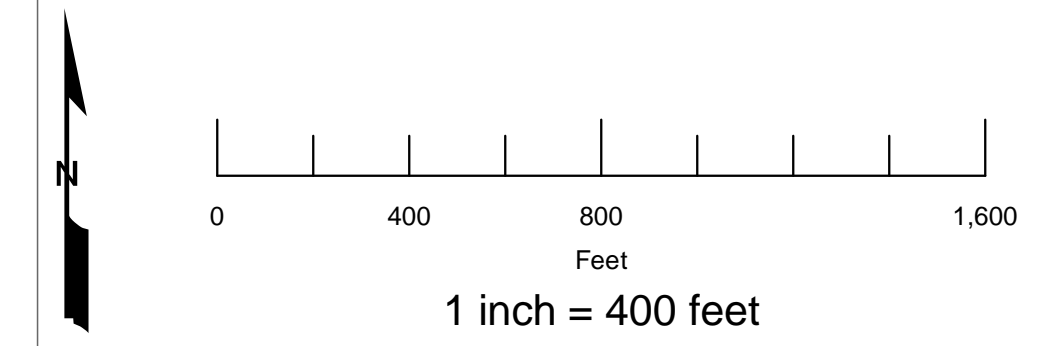


Lee Moore Wash Basin Management Study

Exhibit 1 - Lee Moore Wash Basin Management Study 100-yr Floodplain Maps

The floodplains presented on this exhibit reflect the outcome of HEC-RAS and/or FLO-2D hydraulic modeling based on 100-year peak flows developed for either the 3-hour or 24-hour storm event. Maps do not necessarily show flooding resulting from localized, higher intensity storms.



Plan Set Legend (Sheets 01 to 69)

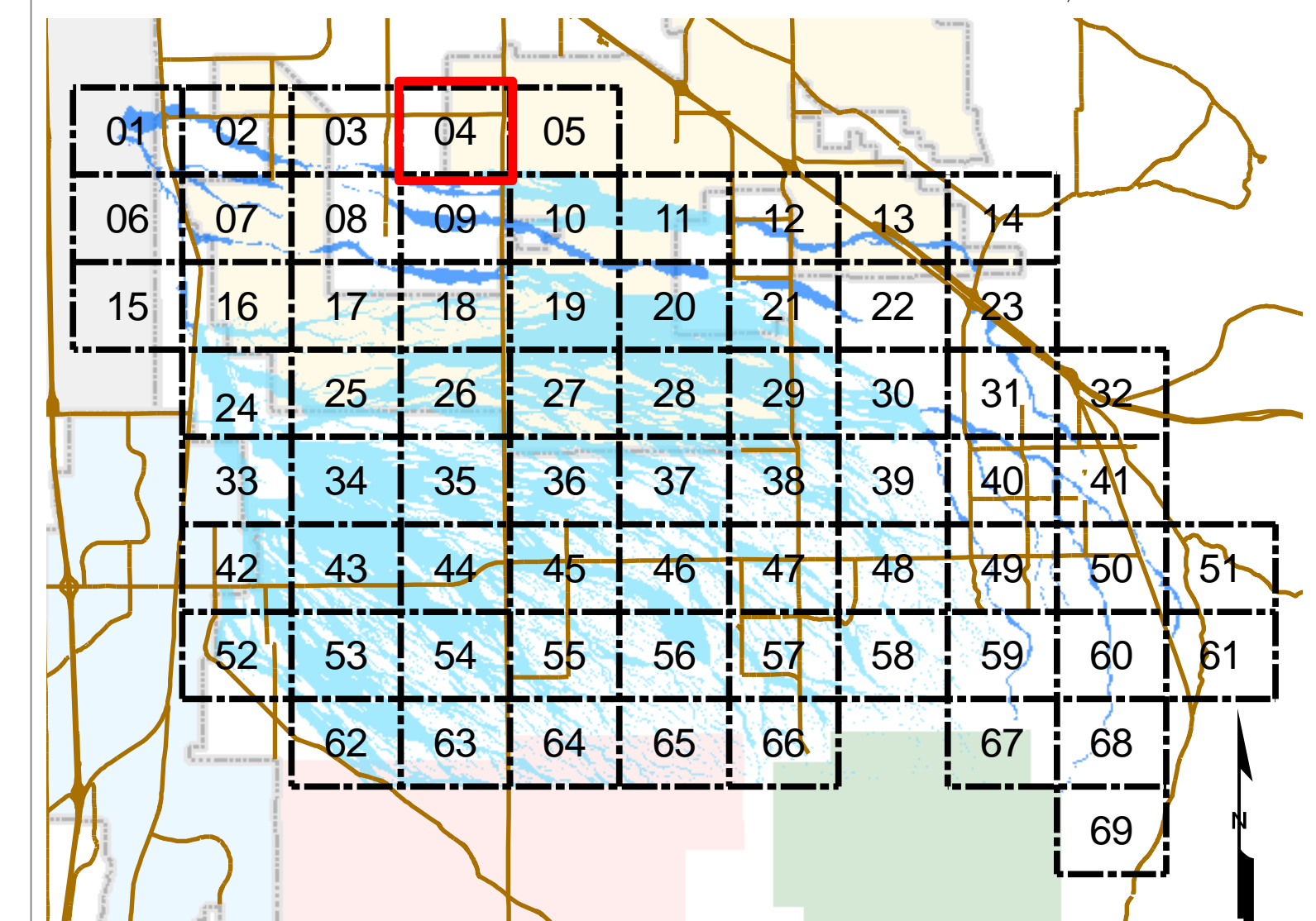
- Unmodeled Breakout Potential
- Flow arrow
- Sheet line
- Streets (major)
- 10-ft Contours (NAVD 88)
- FLO-2D Flow Recording Cross Sections (discharge in cfs)
- CLS Designation Boundary
- Concentration Point (HEC-HMS model)
- 100-yr FLO-2D Flood Limits ($Q_p > 100\text{cfs}$)
- 100-yr HEC-RAS Flood Limits ($Q_p > \pm 1000\text{cfs}$)
- Section Line
- Parcels (approximate)

Aerial images for sheets 01-63: Aerials Express spring 2007 - 1 foot resolution
 Aerial images for sheets 64-69: i-cubed Nationwide Prime 1m or better resolution imagery for the contiguous United States (2005).

Topographic contours developed from 2005 PAG LIDAR data.



Stantec
 Stantec Consulting, Inc.
 201 North Banta Avenue Ste. 101
 Tucson, AZ 85745-2999



Legend

- Major Streets
- 100-yr FLO-2D Flood Limits ($Q_p > 100\text{cfs}$)
- 100-yr HEC-RAS Flood Limits ($Q_p > 1000\text{cfs}$)
- City of Tucson
- Tohono O'odham Nation San Xavier District
- Town of Sahuarita
- Coronado National Forest
- Santa Rita Experimental Range and Wildlife Area

