



**PIMA COUNTY**

**SAFETY + JUSTICE  
CHALLENGE**

---

Community Collaborative

September 19, 2016

Pima County Consolidated Justice Court

Ellen Wheeler – Assistant County Administrator

Terrance Cheung – Program Manager

Jean Campbell – Data Coordinator



Supported by the John D. and Catherine T.  
MacArthur Foundation

# Community Collaborative Agenda

- Welcome – Ellen Wheeler  
Assistant County Administrator
- Lightning Round Self Introductions
- Pre-Survey
- Ice Breaker
- Community Collaborative Overview
- Steering Committee
- Pima County Jail Reduction Strategies
- Review monthly jail report
- Decisions
- Upcoming Events/Meeting Schedule
- Round Robin
- Open Forum

## Safety & Justice Community Collaborative

### Public Agency

Karla Avalos	Tucson Mayor
	Jonathan Rothschild
Matt Pate	Tucson Councilmember
	Richard Fimbres
Jason Winsky	Tucson Police Department
Hon. Tony Riojas	Tucson City Court
Amelia	Pima County Attorney's Office
Craig-Cramer	
Danna Whiting	Pima County Behavioral Health
Lori Lefferts	Pima County
	Public Defense Services
Lt. Scott Lowing	Pima County
	Sheriff's Department
Domingo Corona	Pima Pretrial Services,
	Superior Court
Ron Overholt	Pima Superior Court
Doug Kooi	Pima County
	Consolidated Justice Courts
Yvette Tucker	Regional Behavioral
	Health Authority - Cenpatico
Alfred L. Urbina, Esq.	Pascua Yaqui Tribe
To be Announced	Tohono O'odham Nation

### Community

Lyle Daychild	American Friends Service Committee
Thea Dixon	Community Partners, Inc.
Anna	Emerge!
Harper-Guerrero	
Sally Hueston	HOPE, Inc.
Genevieve James	Marana Health Care Counseling and Wellness Center
	Primavera
Keith Jeffery	UA RISE Health & Wellness Center
Michele Keller	
	Retired City Court Judge
Hon. Michael Lex	UA Center for Climate Adaptation Science and Solutions
Chad Marchand	Pima Prevention Partnership
	Kolbe Society
Manny Mejias	Advisory Board Member
Kona Morrison	NAACP
Guenevere	
Nelson-Melby	
Hon. Charles Pyle	Retired Federal Judge
Grady Scott	Interdenominational Minister's Alliance
	UA Rogers College of Law
Andrew Silverman	Community Bridges, Inc.
Rudy Trinidad	Arizona Serve of Prescott College
Celia Williams	
Gerald Williams	

Safety + Justice  
Community  
Collaborative

Steering  
Committee

**32 Members**

Formerly Incarcerated/Family Members  
Community Residents/Advocates  
Service Providers  
Justice System Stakeholders  
Tribal Nation Representatives

**Responsibilities**

Meets quarterly  
Reviews data results/Challenge updates  
Provides strategic analysis  
Assures integrity & credibility of process  
Develops Community Outreach/Education activities  
Commitment to leadership development  
S + J Collaborative Ambassadors  
Attendance at MacArthur Foundation All-Sites Conference (1)  
*\*\*Agreements made by consensus\*\**

**Staff**

Terrance Cheung – Program Manager  
Jean Campbell - Data Coordinator

Safety + Justice  
Community  
Collaborative

Steering  
Committee

**9 Members (5 Community/4 Public Agency)**

Selected by Collaborative peers

**Responsibilities**

Meets at least 6x a year

Develops Community Collaborative meeting agendas

Reviews data monitoring results

Provides informed oversight to process

Availability to Implementation Team

Reviews Operating Guidelines

Helps design Leadership Institute

**Assisting with 5/16 – 5/17, 2017 Conference –**

***“Decriminalizing Mental Illness”***

***\*\*Agreements made by consensus\*\****

**Staff**

Terrance Cheung - Program Manager

Jean Campbell – Data Coordinator

## Core Sites

Charleston County, SC  
Harris County, TX  
Lucas County, OH  
Milwaukee County, WI  
New Orleans, LA  
New York, NY  
Philadelphia, PA  
**Pima County, AZ**  
St. Louis County, MO  
Spokane County, WA  
The State of Connecticut

## The Challenge Network



★ 11 Core  
● 9 Partner

## Partner Sites

Ada County, ID  
Cook County, IL  
Los Angeles County, CA  
Mecklenburg County, NC  
Mesa County, CO  
Multnomah County, OR  
Palm Beach County, FL  
Pennington County, SD  
Shelby County, TN

# Pima County Grant Award

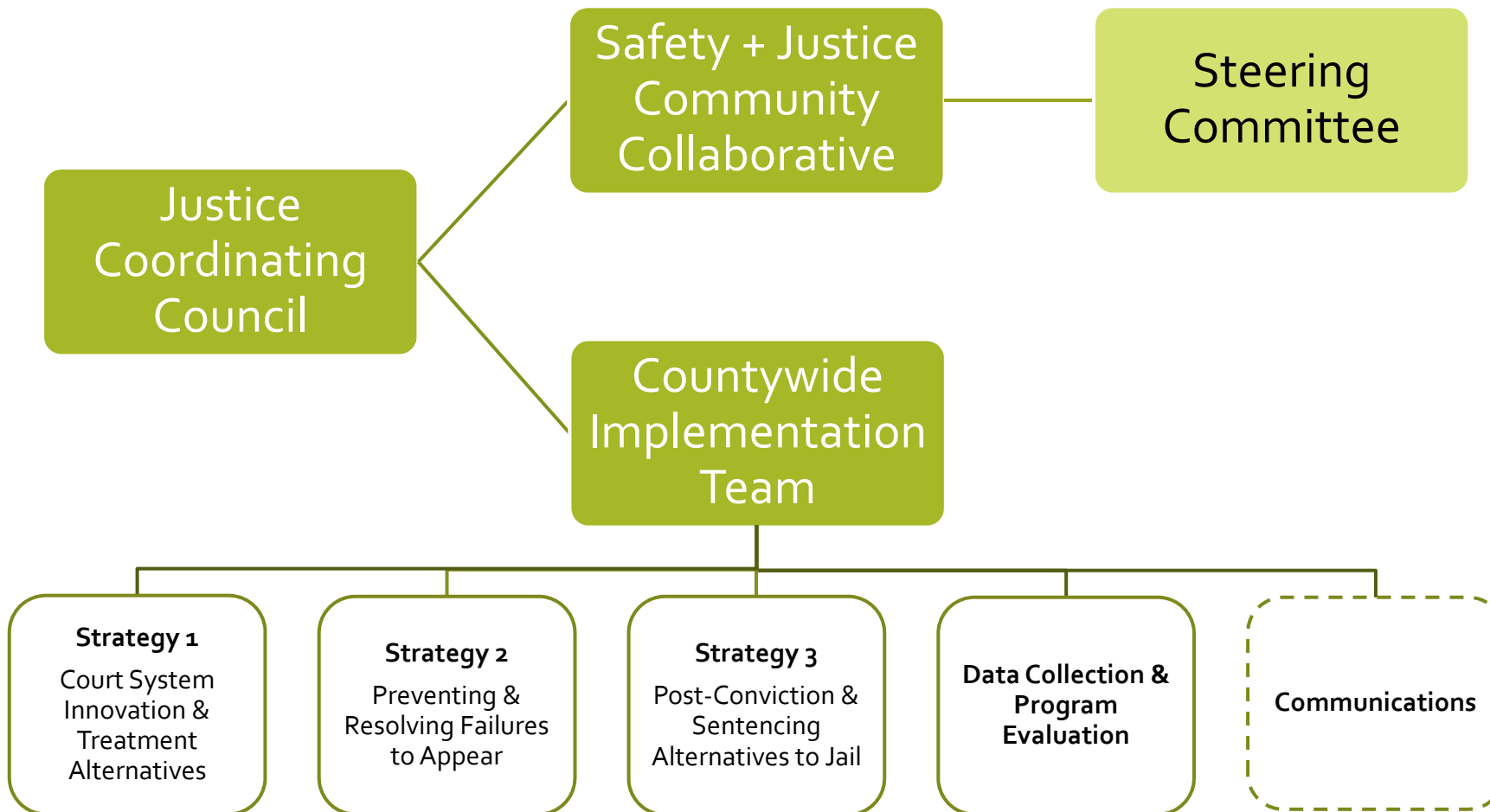


**April 2016, MacArthur Foundation awards Pima County \$1.5 million over two years**

Pima County's Goals:

- Safely reducing County jail population to 1574 by 2019
  - A reduction of 320 individuals per day
  - Lowest number of inmates in 20 years
- Address issues of racial disparities in the criminal justice system

Reduction would save taxpayers an estimated \$2 million a year







# Pima County Strategies

## #1 Court System Innovations and Treatment Alternatives

- Implement Universal Pretrial Risk Screening for all misdemeanor defendants in order to increase post-booking releases
- Develop substance abuse/mental health screening before the Initial Appearance (IA) to provide the court with safe treatment alternatives to jail
- Increase Pretrial Services capacity to supervise high-risk individuals with behavioral health needs after release
- Provide training to justice system stakeholders, including judges, about court system innovations and treatment alternatives



# Pima County Strategies

## #2 Preventing and Resolving Failure to Appear Warrants

- Enhance automated call, text, and email court-reminders
- Establish multi-jurisdictional weekend warrant-resolution days

**June 11, 2016 – 800+ individuals served at  
 Justice Court & Tucson City Court  
(nearly 300 warrants quashed)**

**October 1, 2016 – Next Warrant Resolution Court**

- Strengthen relations with Tribal Nations and work to offer tribal members living on reservations easier access to courts in Pima County



# Pima County Strategies

## #3 Post Conviction Alternatives to Jail

- Expand Home Detention Electronic Monitoring Program as alternative for non-violent misdemeanor and felony offenders
  - Community Supervision-based options that allow employment, education and treatment to continue
- Reduce Use of Automatic Probation Holds
  - Holds placed on new arrestees not automatic
  - Case-by-Case decision
- Expand Use of Summons in Lieu of Warrantless Arrests for Petitions to Revoke (PTR)
  - Increase use of evidence-based intermediate sanctions to gain compliance



# Pima County Strategies

## Community Engagement

- Establish a Community Collaborative ✓
- Design a program supporting leadership development among formerly incarcerated individuals (Leadership Institute)
- Partner with the University of Arizona to develop a qualitative research project with current (and former) defendants and inmates
- May 16 & 17, 2017 Conference –  
*"Decriminalizing Mental Illness"*



# Pima County 2-Year Grant Budget

Strategy 1	\$1,131,824
Strategy 2	\$ 34,240
Strategy 3	unfunded
Community Engagement	\$ 136,336
Administrative/ Supportive Services	\$ 197,600
<b>TOTAL:</b>	<b>\$1,500,000</b>
<b>TOTAL IN-KIND</b>	<b>\$1,684,393</b>

# In Pima County August 2016

## Total Arrested and Booked

**2698 – Total Bookings**

82.90% - Men      17.03% - Women

12.64%	African American	(4.1%	2015 US Census)
0.55%	Asian	(3.2%	2015 US Census)
38.11%	Caucasian	(52.9%	2015 US Census)
43.93%	Hispanic	(36.4%	2015 US Census)
4.77%	Native American	(4.3%	2015 US Census)

Estimated County Population 1,010,025

## **2721 – Total Released**

(Court Ordered, Bond Out, Time Served)

## **Average Daily Population**

1832 – Pretrial & Sentenced



# Pima County – 2016 Jail Population Report

Month	Total Bookings	Men	Women	African American	Asian	Caucasian	Hispanic	Native American	Total Released	ADP
12										
11										
10										
9										
8	2698	82.90%	17.03%	12.64%	0.55%	38.11%	43.93%	4.77%	2721	1832
7	2612	83.48%	16.52%	12.72%	0.61%	39.30%	42.63%	4.73%	2640	1815
6	2468	83.26%	16.74%	12.57%	0.41%	38.95%	42.91%	5.16%	2548	1857
5	2608	83.78%	16.22%	12.35%	0.41%	38.50%	43.53%	5.21%	2524	1838
4	2719	84.11%	15.89%	12.62%	0.58%	37.84%	44.05%	4.91%	2650	1818
3	2550	84.22%	15.78%	12.29%	0.49%	38.35%	43.71%	5.15%	2592	1810
2	2413	84.24%	15.76%	12.28%	0.70%	38.75%	42.82%	5.46%	2403	1826
1	2583	83.27%	16.73%	12.33%	0.67%	39.24%	42.10%	5.65%	2580	1872

# Pima County – 2015 Jail Population Report

Month	Total Bookings	Men	Women	African American	Asian	Caucasian	Hispanic	Native American	Total Released	ADP
12	2459	83.27%	16.73%	12.54%	0.73%	39.96%	41.24%	5.53%	2521	1890
11	2369	83.20%	16.80%	12.29%	0.84%	40.64%	40.63%	5.59%	2373	1922
10	2522	83.12%	16.88%	12.04%	0.90%	39.69%	41.93%	5.39%	2543	1931





Supported by the John D. and Catherine T. MacArthur Foundation

# Community Collaborative

## Decision Time

- What's the role of the public at Collaborative meetings?
- Steering Committee Selection  
5 Community/4 Public Agency
- Collaborative Chairs  
1 Community/1 Public Agency
- Pretrial Justice Community Gathering  
November 8, 2016



## Calendar



**September 21, 2016** – Alternatives to Incarceration Forum  
6:00 p.m. - 8:00 p.m. - YWCA

**September 27, 2016** – 2<sup>nd</sup> Chance Job Fair  
1:00 p.m. – 4:00 p.m. - Tucson Convention Center

**September 28, 2016** – Empowerment Series: Challenges & Series  
3:30 p.m. – 5:00 p.m. - Goodwill METRO Center

**October 1, 2016** – Warrant Resolution Court  
9:00 a.m. – 3:00 p.m. - Justice Court

**October 9, 2016** – Why Poverty Matters to Community Sustainability  
8:30 a.m. – 11:00 a.m. - Radisson Hotel Tucson Airport

**November 8, 2016** – Pretrial Justice Community Event

**Night Court – Pima County Consolidated Justice Court**

October 11

November 8

December 6

**May 16 & 17, 2017 Conference – “Decriminalizing Mental Illness”**

**Collaborative (every 3 months)**

Early December 2016

March 2017

June 2017

September 2017

**Steering Committee (6 times a year)**

October 2016

# Follow us



- Website  
[www.pima.gov/safetyandjustice](http://www.pima.gov/safetyandjustice)



- Facebook  
Pima County Safety and Justice Challenge



- Twitter – Pima Safety + Justice  
[@PCSafetyJustice](https://twitter.com/PCSafetyJustice)



- Flickr  
[www.flickr.com/photos/pimacounty/collections](http://www.flickr.com/photos/pimacounty/collections)

# Contact Information

## **Ellen Wheeler**

Assistant County Administrator

520-724-8849 Office

Ellen.Wheeler@pima.gov



## **Terrance Cheung**

Program Manager

520-724-8770 Office

520-247-5905 Cell

Terrance.Cheung@pima.gov

## **Jean Campbell**

Data Coordinator

(520) 724-8311 Office

Jean.Campbell@pima.gov