




MEMORANDUM

Date: March 27, 2020

To: The Honorable Chairman and Members
Pima County Board of Supervisors

From: C.H. Huckelberry
County Administrator 

Re: **Casa Alitas Monthly Volume of Asylum Seekers for Shelter Services**

Please see the attached graphs related to asylum seeker releases in Pima County. From 2019 through most of March 2020, a total of 20,853 releases have occurred at area shelters.

The primary shelter now providing asylum shelter services, Casa Alitas (operated by Catholic Community Services), has seen a decrease in releases since December 2019. We expect the total releases of asylum seekers for March 2020 will be less than 300 as compared to 1,800 in December 2019.

Catholic Community Services as well as our Health Department continue to actively monitor the daily intakes at Casa Alitas to evaluate the possible use of the facility for other sheltering purposes as may be necessary for the COVID-19 pandemic.

CHH/anc

Attachments

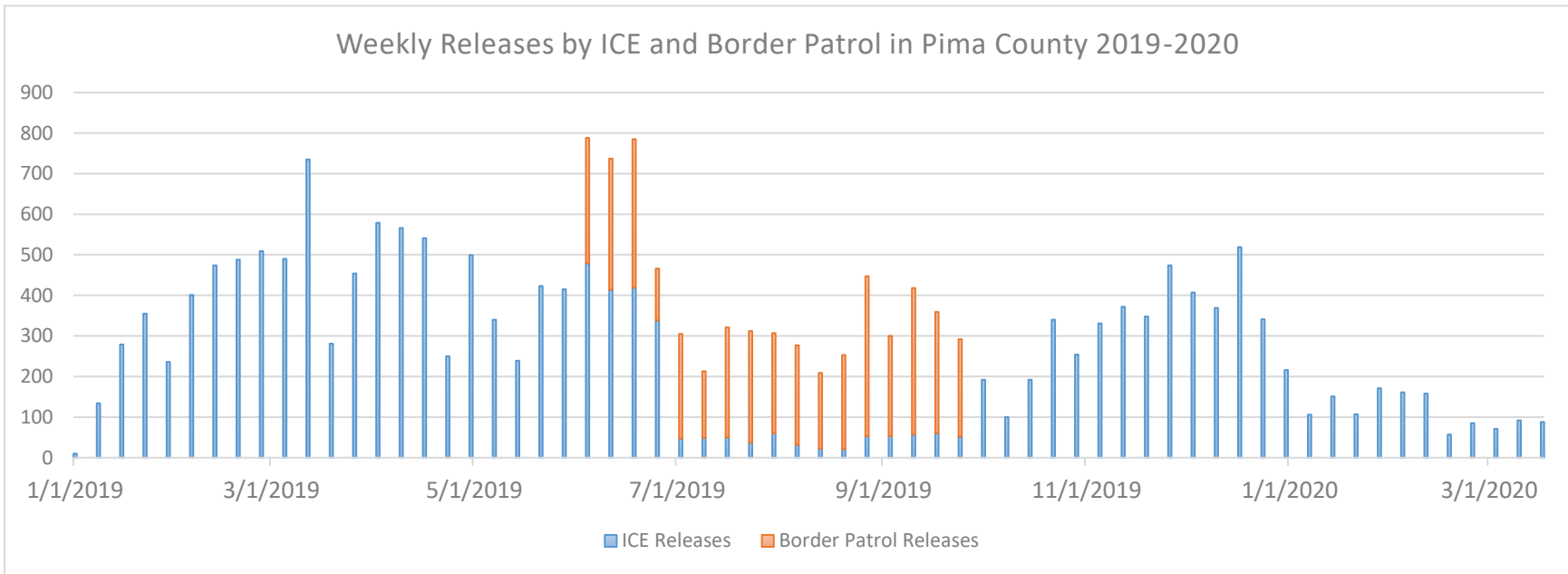
c: Jan Leshar, Chief Deputy County Administrator
Francisco García, MD, MPH, Deputy County Administrator & Chief Medical Officer,
Health and Community Services
Marguerite Peg Harmon, CEO, Catholic Community Services of Southern Arizona, Inc.
Teresa Cavendish, Director of Operations, Catholic Community Services of Southern
Arizona, Inc.



Releases Into Pima County – Weekly and Daily Analysis, by Agency
 Prepared for Weekly Leadership Update

Summary of Asylum Seeker Releases in Pima County 2019-2020

Total ICE Releases in 2019-2020	16,306
Total Border Patrol Releases in 2019-2020	4,547
Total Releases	20,853



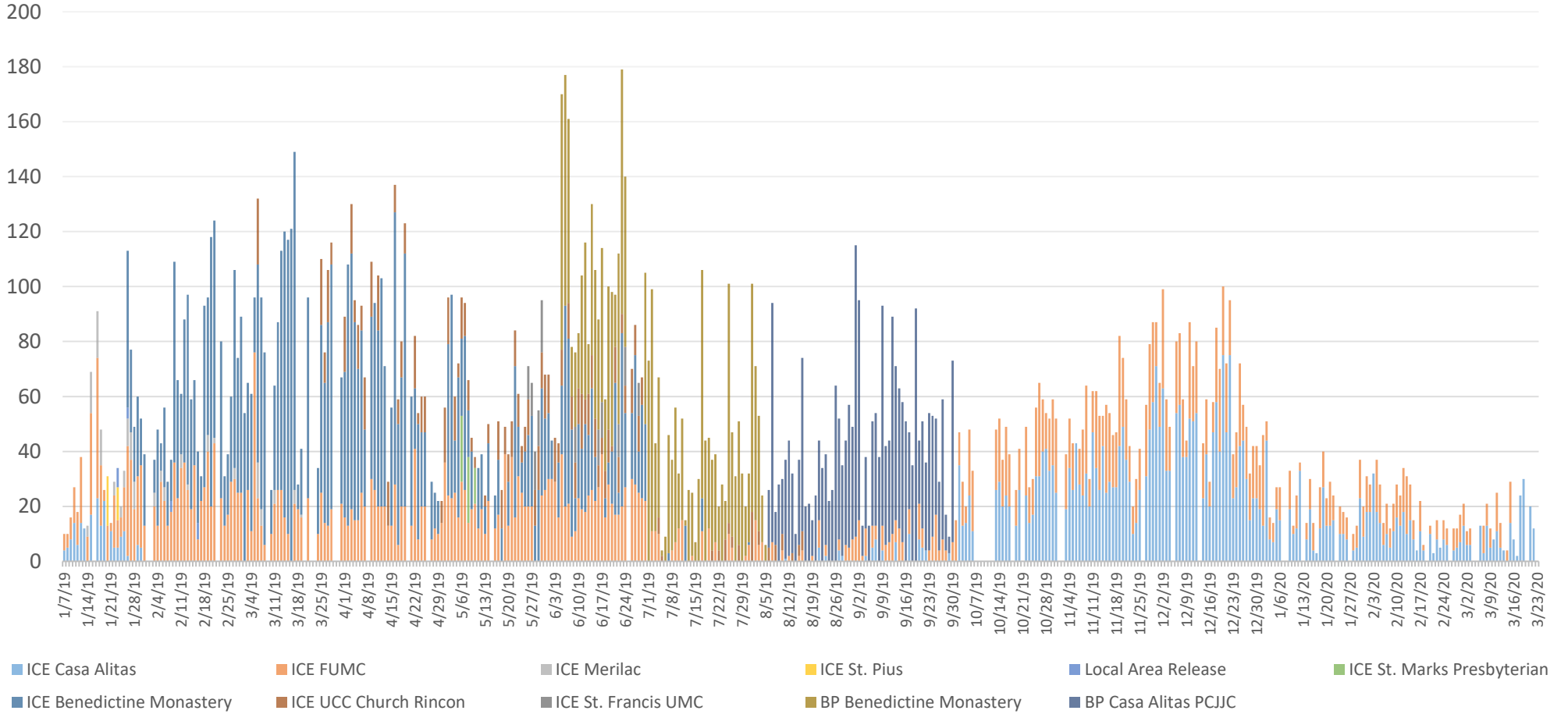
Summary of Releases to Local Area Shelters in Pima County

ICE Casa Alitas	ICE FUMC	ICE Merilac	ICE St. Pius	Local Area Release	ICE St. Marks Presbyterian	ICE Benedictine Monastery	ICE UCC Church Rincon	ICE St. Francis UMC	BP Casa Alitas PCJJC	BP Benedictine Monastery
3745	5893	157	30	21	61	5574	1014	147	2206	2341



Releases Into Pima County – Weekly and Daily Analysis, by Agency
Prepared for Weekly Leadership Update

Daily Releases by ICE and Border Patrol in Pima County 2019-2020





Releases Into Pima County – Weekly and Daily Analysis, by Agency
Prepared for Weekly Leadership Update

