



MEMORANDUM

Date: July 23, 2013

To: The Honorable Chairman and Members
Pima County Board of Supervisors

From: C.H. Huckelberry
County Administrator 

Re: **Sonoran Corridor Alternatives Analysis**

The County has taken a number of steps to protect our largest private employer, Raytheon, beginning with the acquisition of vacant lands south of Raytheon that threatened to be converted to urban uses that would create significant encroachment issues for Raytheon.

Presently, we are in the environmental and planning stages of relocating Hughes Access Road approximately one-half mile south of its present alignment. Because of the volume of public traffic, Hughes Access Road poses an encroachment hazard to Raytheon operations, and Raytheon must operate their facilities under a waiver from the United States Air Force. Relocation of Hughes Access is essential to allow Raytheon a full range of options regarding production facilities and potential expansion.

Planning activities are now underway to have the relocated Hughes Access Road fully designed, right of way acquired from the Tucson Airport Authority, and the start of construction in the first quarter of 2014 with completion approximately 12 months later. This is a significant undertaking by the County, as well as our region, to provide appropriate buffers for Raytheon's continued production and possible expansion.

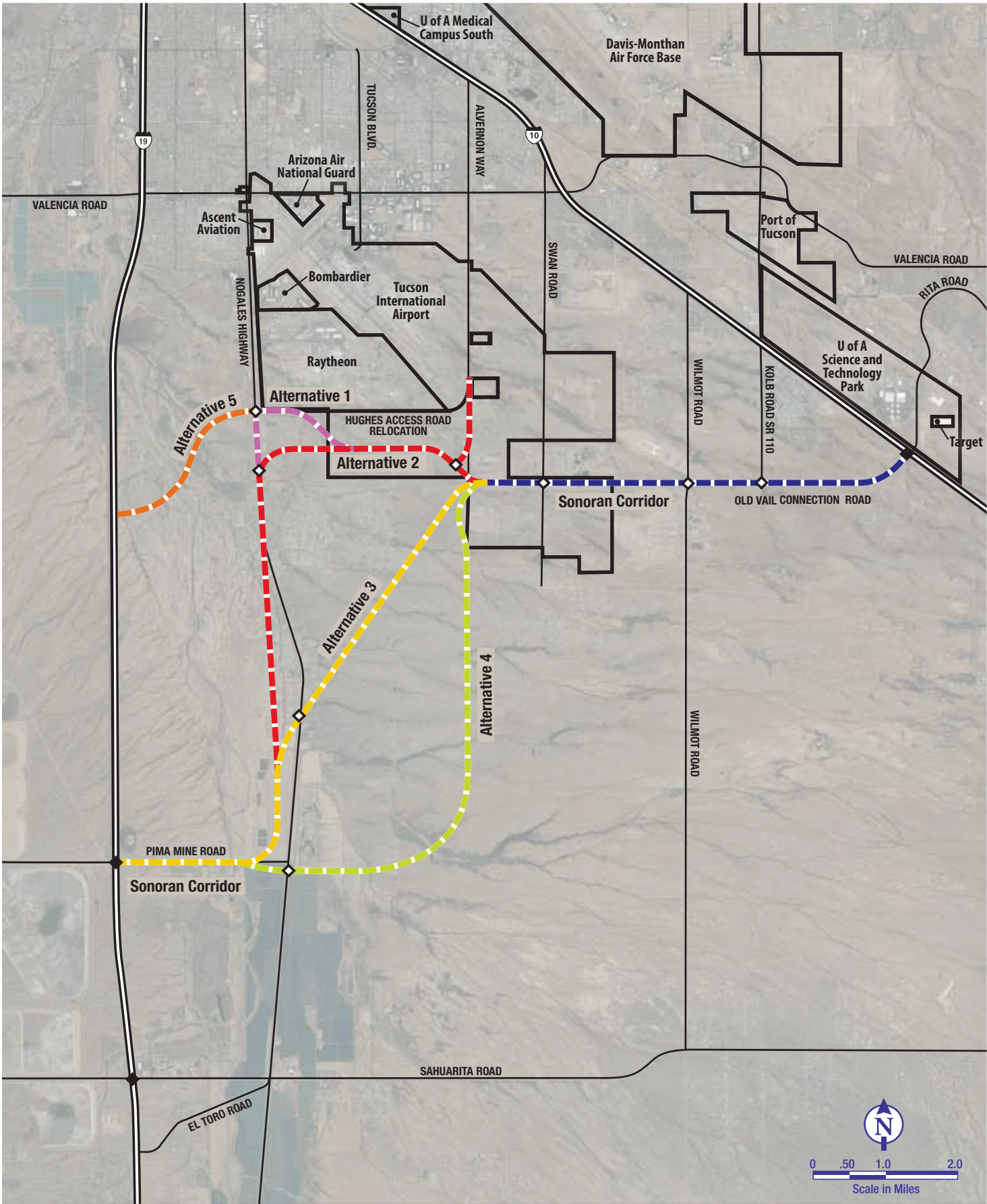
In addition to the relocation of Hughes Access Road, the County has been actively involved in economic development planning related to the Aerospace and Defense Corridor, which is now concentrating on a number of alternatives related to highway connections between Interstates 10 and 19, known as the Sonoran Corridor alternatives. A number of alternatives are shown on the attached map. With the assistance of the Arizona Department of Transportation and other entities in our region, the County will continue to pursue a desired alternative for this connection, which has been planned for nearly 30 years.

If you have any questions regarding our activities related to the relocation of Hughes Access Road or the planning of the Sonoran Corridor alternatives, please contact me.

CHH/dph

Attachment

c: John Bernal, Deputy County Administrator for Public Works
John Moffatt, Director, Strategic Planning Office
Priscilla Cornelio, Director, Transportation Department



**FIGURE 3
SONORAN CORRIDOR ALTERNATIVES**