

Status of the Colorado River & Lake Mead

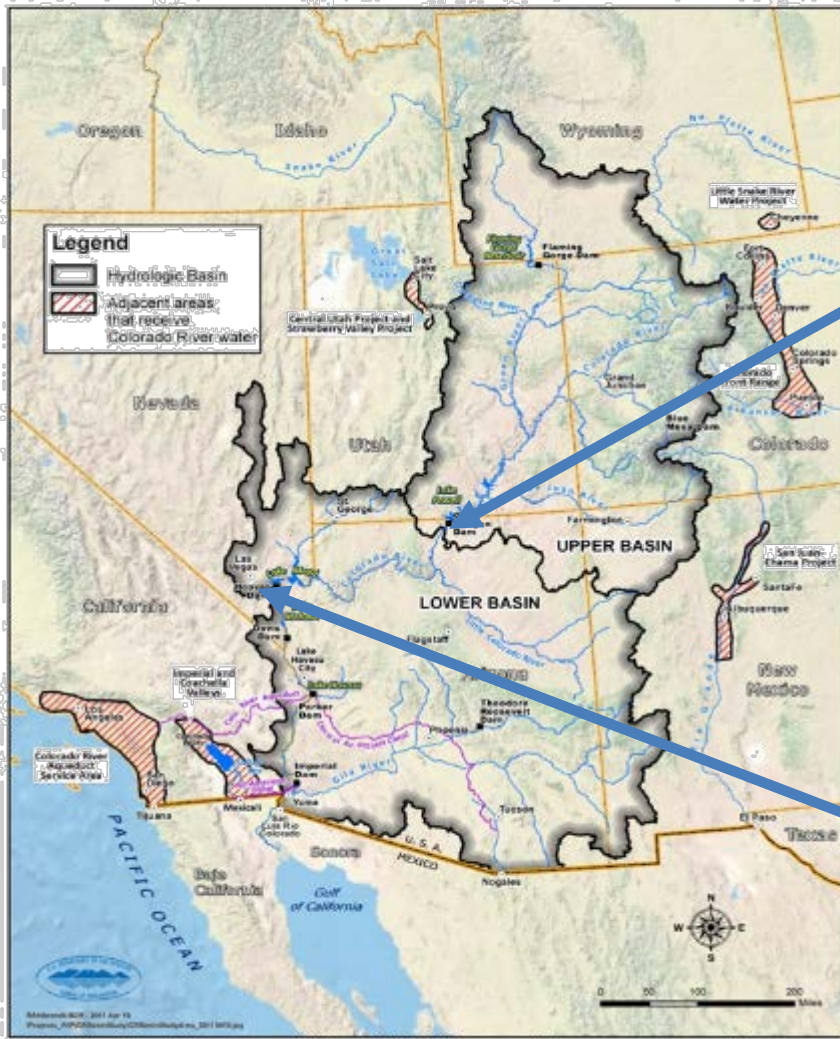
Pima County LDIG
March 11, 2020

Mitch Basefsky
External Relations
Pima/Pinal



YOUR WATER. YOUR FUTURE.

Lake Mead & Powell Status



1/1/2000 87% Full
(21.3 MAF)

3-9-20
3602'
49.1% Full
(12 MAF)

Lake Powell

**Up 31 ft
from 2019**

1/1/2000 91% Full
(25 MAF)

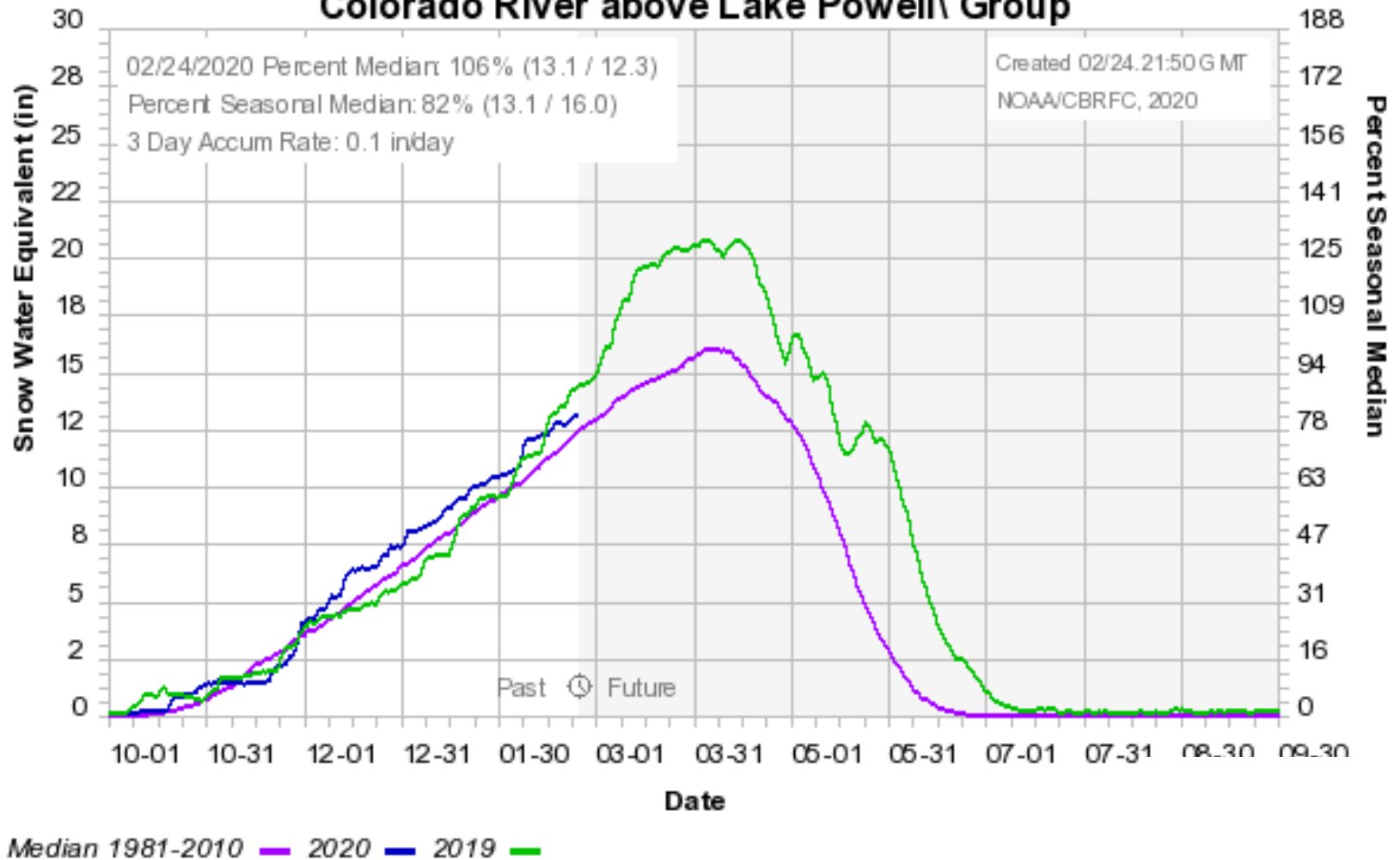
3/9/20
1095.9'
43.9% Full
(11.4 MAF)

Lake Mead

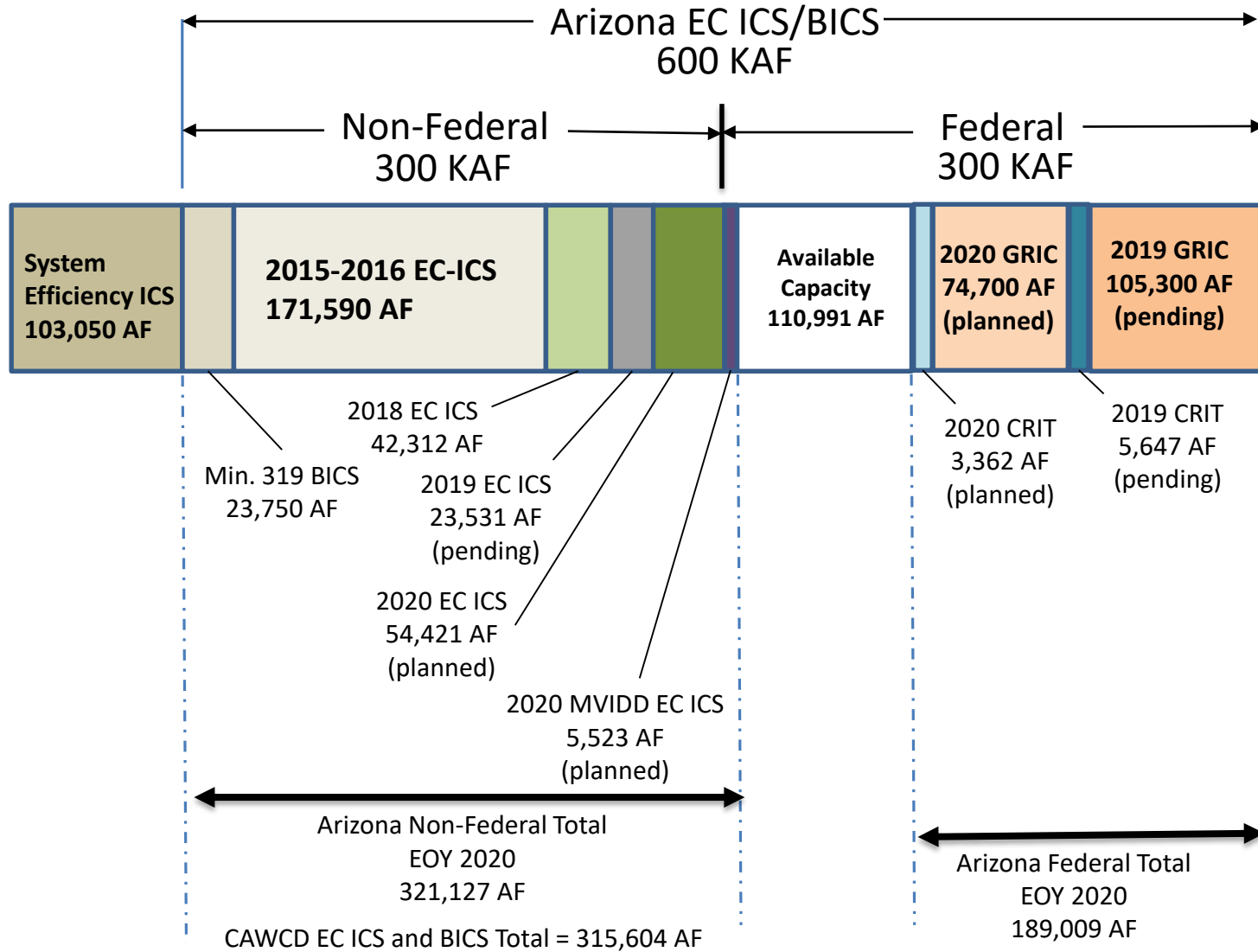
**Up 6.8 ft
from 2019**

Lake Mead & Powell Status

Colorado Basin River Forecast Center Colorado River above Lake Powell Group



Arizona ICS Accumulation for DCP – Planned EOY 2020



Probability of System Conditions - February 2020 (Observed, Stress Test)

	2020		2021		2022		2023		2024	
Lake Powell Release > 8.23 MAF	3	3	57	55	70	52	60	52	60	51
Equalization > 8.23 MAF	3	3	11	5	33	8	22	11	25	14
Upper Elevation > 8.23 MAF	N	N	46	50	37	44	38	41	35	37
Lake Powell Release = 8.23 MAF	97	97	43	45	26	27	22	17	22	14
Equalization = 8.23 MAF	0	0	0	0	0	1	1	0	1	1
Upper Elevation = 8.23 MAF	97	97	43	45	26	26	21	17	20	12
Mid-Elevation = 8.23 MAF	0	0	0	0	0	0	0	0	1	1
Lake Powell Release < 8.23 MAF	0	0	0	0	14	22	18	31	18	32
Upper Elevation < 8.23 MAF	0	0	0	0	0	0	0	0	1	1
Mid-Elevation = 7.48 MAF	0	0	0	0	14	22	18	31	17	31
Lake Mead Elevation Reduction Tiers	100	100	80	80	82	89	72	85	69	85
DCP Tier 0 (1090'-1075')	100	100	80	80	71	74	41	40	32	30
Tier 1 Shortage (1075'-1050')	0	0	0	0	11	15	29	41	27	32
Tier 2 Shortage (1050'-1025')	0	0	0	0	0	0	2	4	9	22
Tier 3 Shortage (< 1025')	0	0	0	0	0	0	0	0	1	1

Source: U.S. Bureau of Reclamation

Observed Record: 1906-2018

Stress Test Period: 1988-2018

Status of the Colorado River & Lake Mead

Pima County LDIG
September 11, 2019

QUESTIONS?

Mitch Basefsky
mbasefsky@cap-az.com



YOUR WATER. YOUR FUTURE.