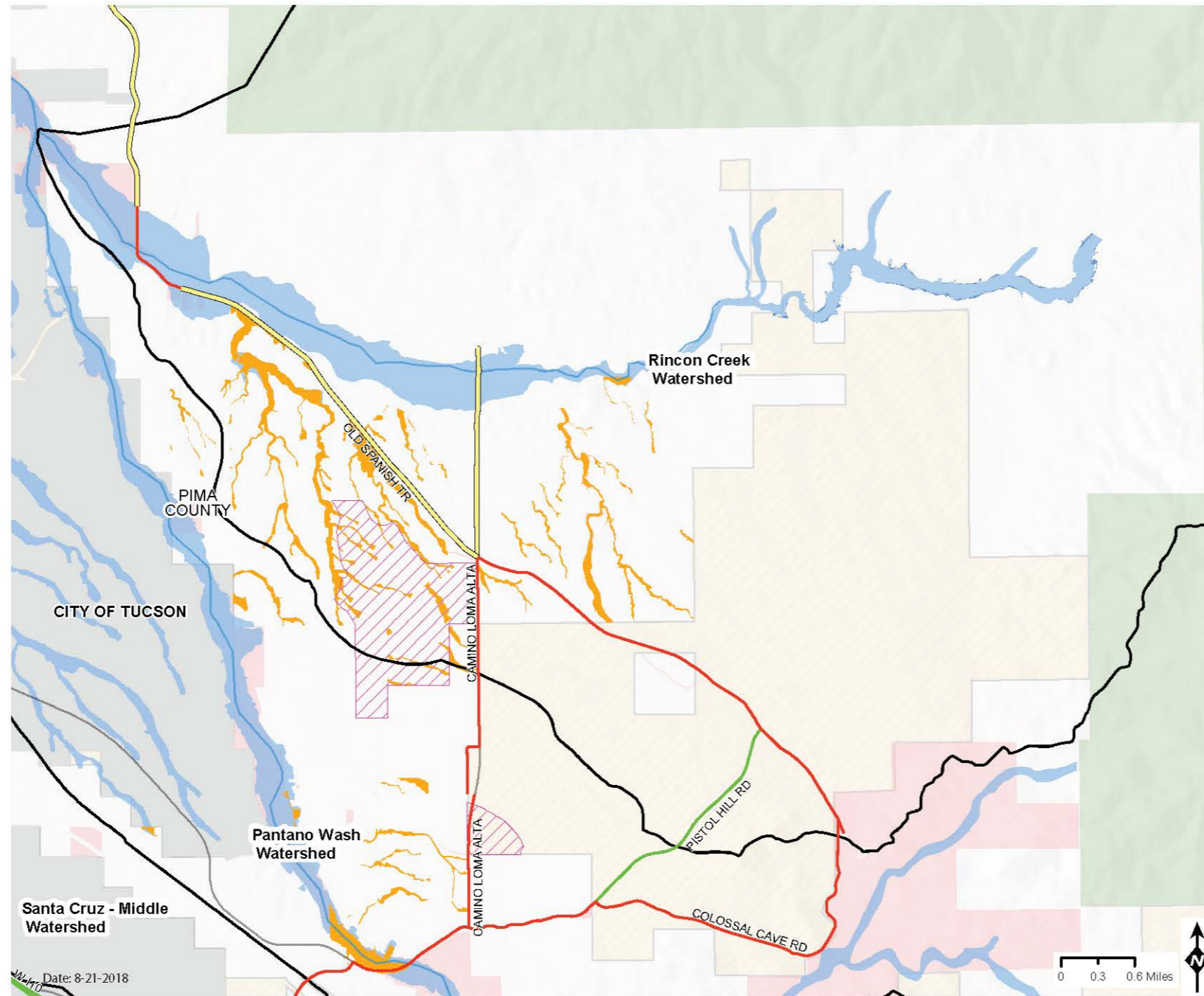


## Rincon Creek

The Rincon Creek's headwaters originate high in the Rincon Mountains near Rincon Peak over 8,000 feet above mean sea level and passes through Rincon Valley to its confluence with Pantano Wash. The presence of water and connectivity between the Rincon Mountains and Tucson Basin make the Rincon Valley a popular wildlife corridor. This watershed is comprised of 52,622 acres and contains 1,450 acres of SFHA, 742 acres of locally identified floodplain and 3,978 acres of Pima County Regulated Riparian Habitat.



## Rincon Creek Floodplain Area and Emergency Vehicle Access



<b>Emergency Vehicle Access</b> — ROADS PASSABLE DURING MAJOR FLOODS — ROADS PASSABLE DURING MODERATE STORMS — ROADS QUESTIONABLE DURING STORMS — Highways — Unknown	<b>FEMA Flood Zone</b> ■ Special Flood Hazard Area ■ Other Flood Area	<b>Additional Floodplain Information</b> ■ Watershed Boundaries ■ Developer Mapped Floodplain ■ Local Floodplain ■ Sheet Flooding ■ Major Washes	<b>Land Stewardship</b> ■ Federal Land ■ Reservations ■ State Land ■ State Land under Pima County Management ■ Pima County Owned Parcels ■ Jurisdictional Boundaries ■ Private Land
---	---	---	--

# PLEASE TAKE OUR SURVEY!

A comprehensive Floodplain Management Plan is being developed by the District to look at flood related issues in unincorporated Pima County on a watershed by watershed basis. This plan will help establish near and long-term goals to improve public safety. Your input will help the District achieve our goal of improving public awareness of flood hazards and minimizing the risk of flood and erosion damage for all County residents, property and infrastructure.

- Where are the high flood risk areas?
- Which watercourses should remain in their natural condition?

Your answers to these and other questions will help identify hazards and community needs and determine locally appropriate development criteria.

For a more detailed map and further information, please visit [www.pima.gov/fmp/](http://www.pima.gov/fmp/)

Complete short survey online at: [surveymonkey.com/r/PCFC\\_survey](https://surveymonkey.com/r/PCFC_survey)



*How would you know the pavement was gone if this road were covered with flowing water? At some point, saturated ground gives way and the pavement above it fails...often from the weight of a car. Don't put yourself, your passengers or rescue personnel in harm's way.*