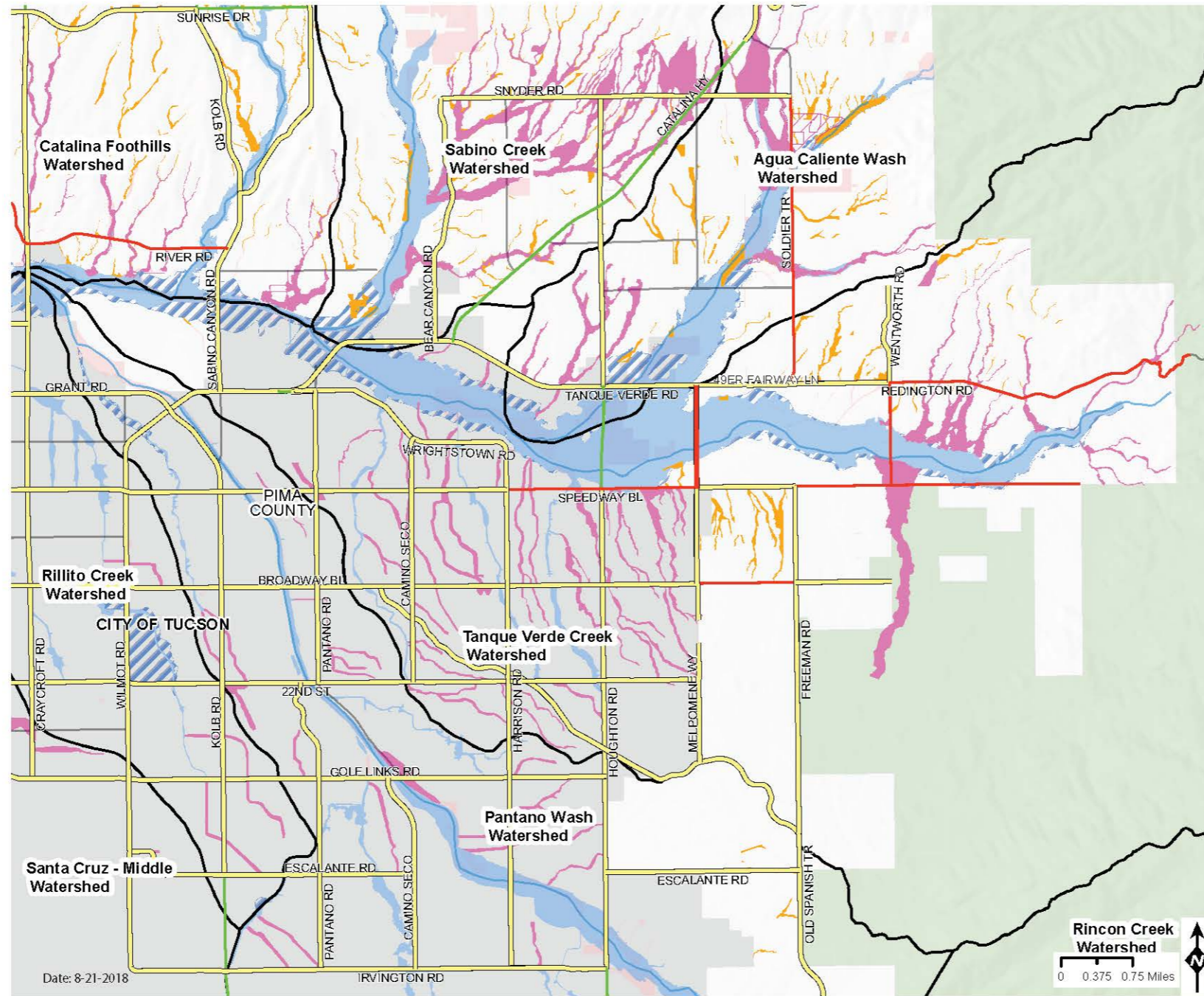


Tanque Verde Creek

The Tanque Verde Creek watershed includes the Tanque Verde Creek and two of its largest tributaries, the Agua Caliente Wash and Sabino Creek. The Tanque Verde Creek's headwaters are on both sides of Redington Road in the Rincon and Santa Catalina mountains. This watershed contains some of the largest networks of springs, surface flows and shallow groundwater anywhere in Pima County. Excluding the Agua Caliente and Sabino Creek watersheds, this watershed is 70,199 acres, of which over 50,409 acres is preserved as open space. Tanque Verde Creek is prone to large flash floods that can cause significant damage to homes and property. The District has documented numerous flooded homes along the north bank of the Tanque Verde including within the Forty Niner Country Club Estates subdivision. Flows often frequently close several road crossings, which limits access in the area. Flood insurance is highly recommended and area residents are advised to plan ahead and know alternate routes to get to their destination when roads are closed. This watershed contains 3,821 acres of SFHA, 3,646 acres of locally identified floodplain and 12,232 acres of Pima County Regulated Riparian Habitat.



Tanque Verde Creek Floodplain Area and Emergency Vehicle Access



PLEASE TAKE OUR SURVEY!

A comprehensive Floodplain Management Plan is being developed by the District to look at flood related issues in unincorporated Pima County on a watershed by watershed basis. This plan will help establish near and long-term goals to improve public safety. Your input will help the District achieve our goal of improving public awareness of flood hazards and minimizing the risk of flood and erosion damage for all County residents, property and infrastructure.

- Where are the high flood risk areas?
- Which watercourses should remain in their natural condition?

Your answers to these and other questions will help identify hazards and community needs and determine locally appropriate development criteria.

For a more detailed map and further information, please visit www.pima.gov/fmp/

Complete short survey online at: surveymonkey.com/r/PCFC_survey



How would you know the pavement was gone if this road were covered with flowing water? At some point, saturated ground gives way and the pavement above it fails...often from the weight of a car. Don't put yourself, your passengers or rescue personnel in harm's way.