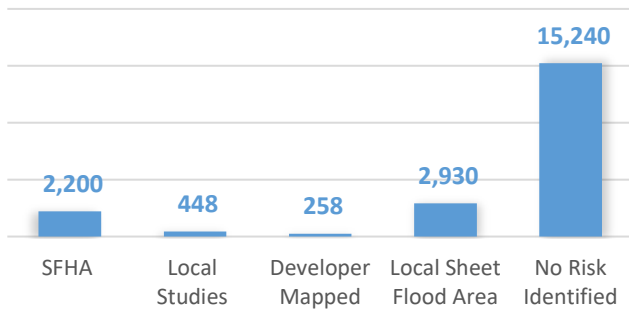




# Tortolita Fan Watershed Flood Hazard Problem Assessment

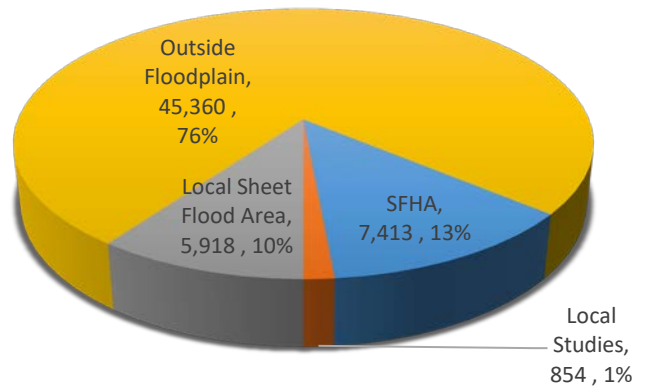
The Pima County Regional Flood Control District (District) has prepared this assessment as part of Steps 4 & 5 of the Floodplain Management Plan process for the Planning Committee (Committee) and public, neighboring communities and partner agencies. The District strives to use forward-looking floodplain management planning practices to minimize the risk of flood and erosion damage for all county residents, property and infrastructure. These efforts include identifying high flood risk areas, preserving natural watercourses, constructing flood control facilities, establishing locally appropriate development standards, distributing public information, providing early warning, and responding to flood emergencies. This assessment will help the Committee identify the activities that will be most effective in the Tortolita Fan watershed in unincorporated Pima County, as part of identifying goals in Step 6 and reviewing possible activities in Step 7.

## Flood Hazards in Acres



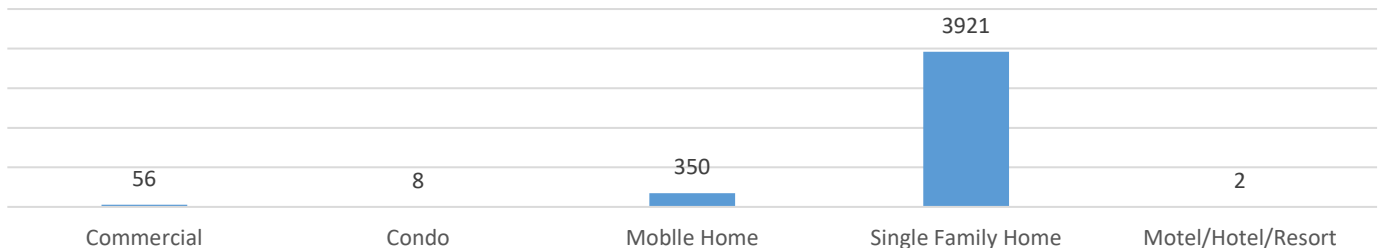
The chart above shows floodplain hazards included in the District GIS by type within the watershed. No Risk Identified includes areas not subject to the 100-year flood and areas not yet studied to determine potential flood hazards. Further local studies by other jurisdictions are not included in the District GIS.

## Watershed Population



The chart above shows the census population of each type of known floodplain within the watershed.

## Buildings in the Floodplain

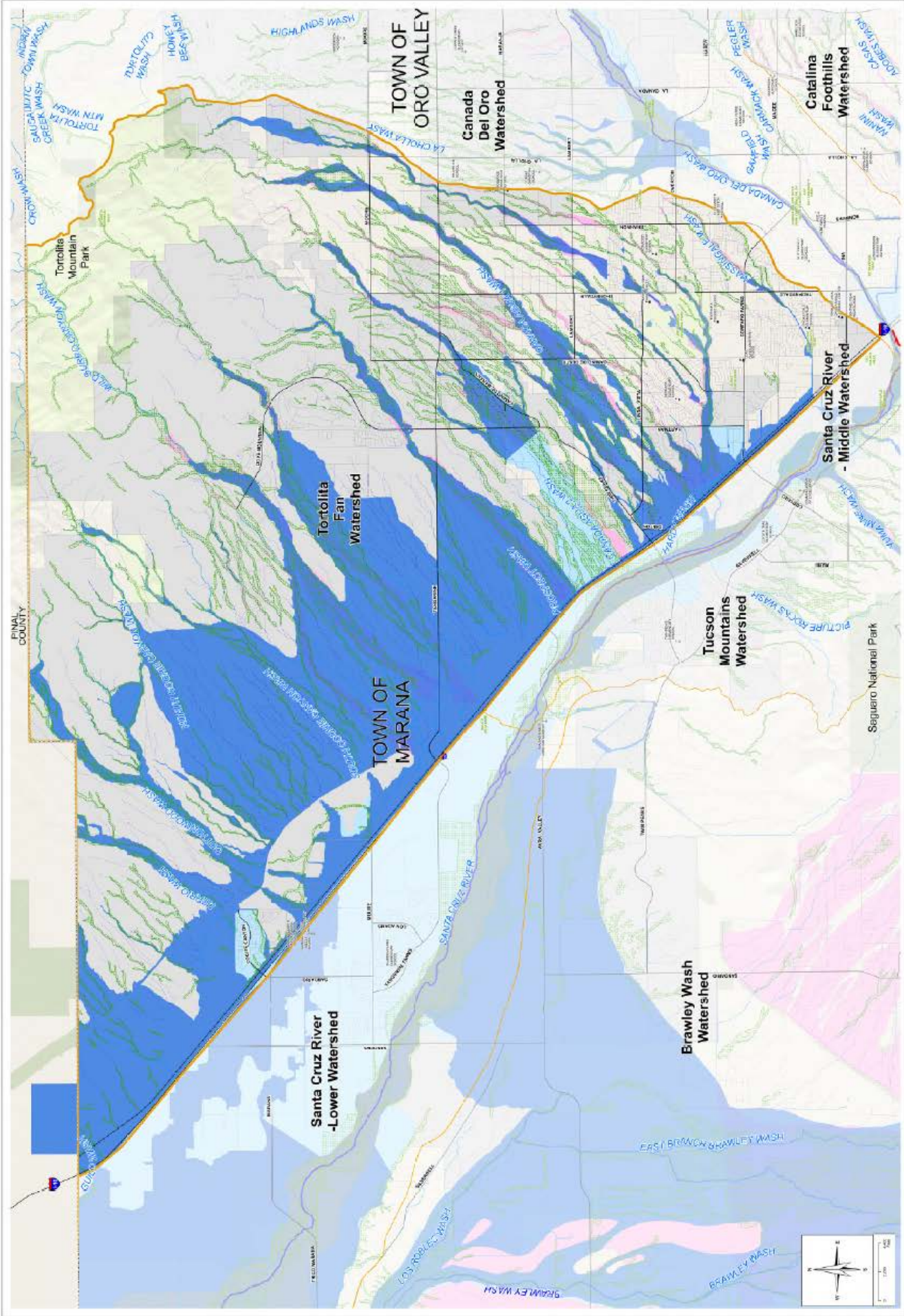


The chart above shows the number of buildings by type per the assessor's parcel database.

For More Information

[www.pima.gov/fmp/](http://www.pima.gov/fmp/) \* [greg.saxe@pima.gov](mailto:greg.saxe@pima.gov) \* 520-724-4633

201 N. Stone Avenue, 9<sup>th</sup> Floor, Tucson Arizona 85701



**Tortolita Fan Watershed**

