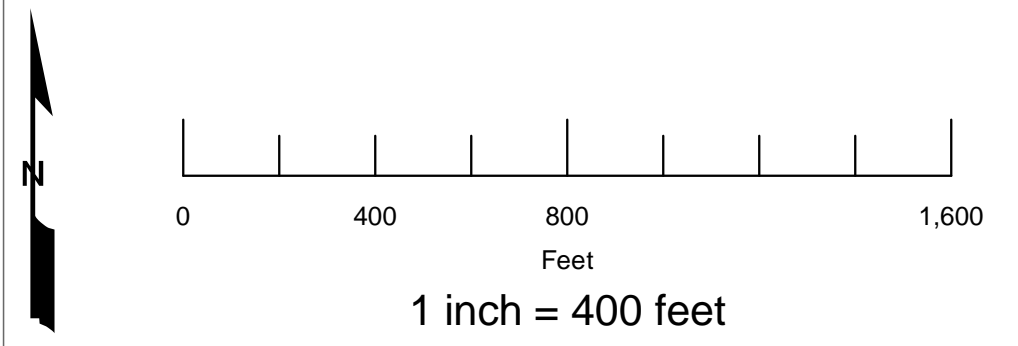


# Lee Moore Wash Basin Management Study

## Exhibit 1 - Lee Moore Wash Basin Management Study 100-yr Floodplain Maps

The floodplains presented on this exhibit reflect the outcome of HEC-RAS and/or FLO-2D hydraulic modeling based on 100-year peak flows developed for either the 3-hour or 24-hour storm event. Maps do not necessarily show flooding resulting from localized, higher intensity storms.

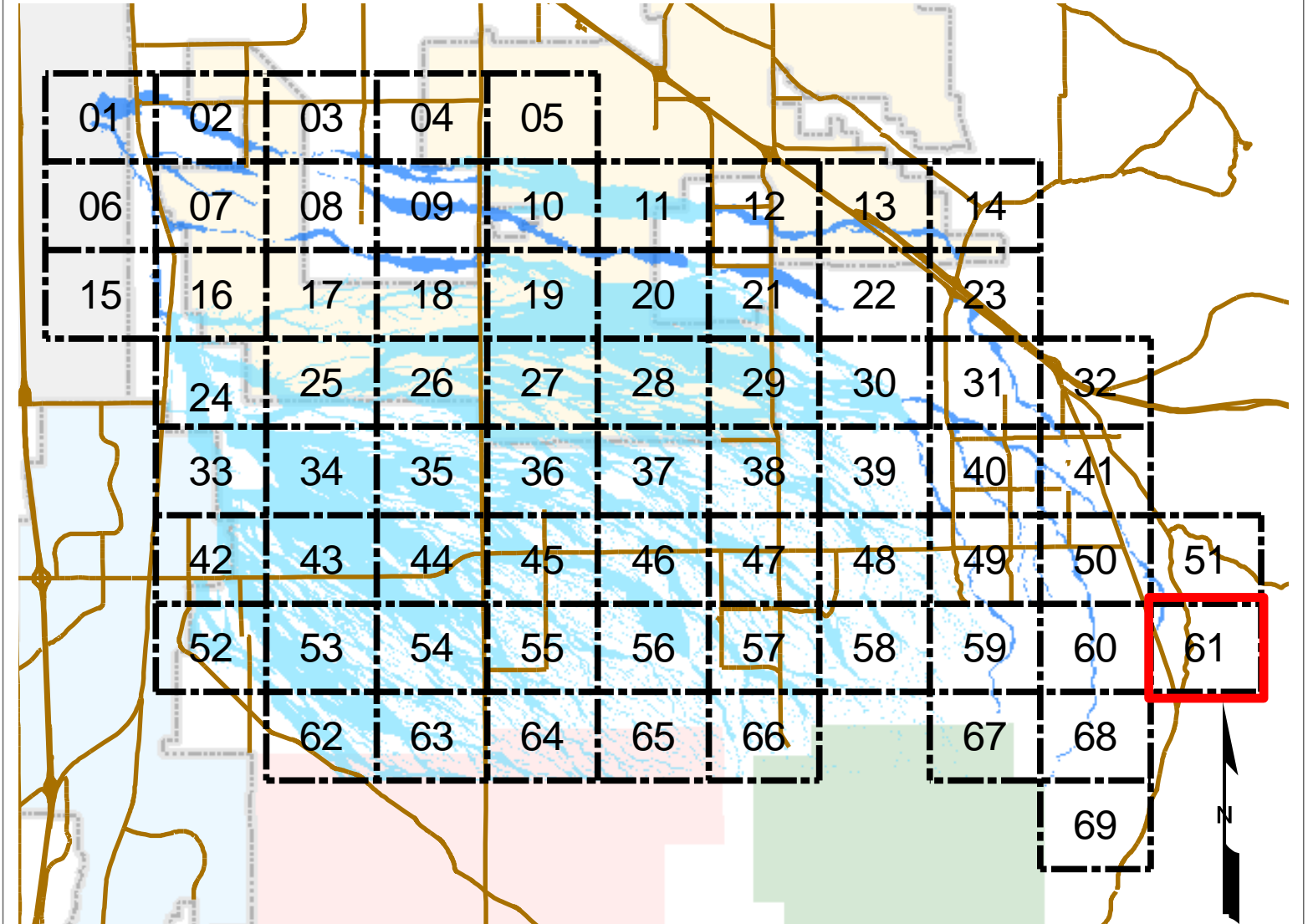


### Plan Set Legend (Sheets 01 to 69)

- Unmodeled Breakout Potential
- Flow arrow
- Sheet line
- Streets (major)
- 10-ft Contours (NAVD 88)
- FLO-2D Flow Recording Cross Sections (discharge in cfs)
- CLS Designation Boundary
- Concentration Point (HEC-HMS model)
- 100-yr FLO-2D Flood Limits ( $Q_p > 100\text{cfs}$ )
- 100-yr HEC-RAS Flood Limits ( $Q_p > \pm 1000\text{cfs}$ )
- Section Line
- Parcels (approximate)

Aerial images for sheets 01-63: Aerials Express spring 2007 - 1 foot resolution  
 Aerial images for sheets 64-69: i-cubed Nationwide Prime 1m or better resolution imagery for the contiguous United States (2005).

Topographic contours developed from 2005 PAG LIDAR data.



- ### Legend
- Major Streets
  - 100-yr FLO-2D Flood Limits ( $Q_p > 100\text{cfs}$ )
  - 100-yr HEC-RAS Flood Limits ( $Q_p > 1000\text{cfs}$ )
  - City of Tucson
  - Tohono O'odham Nation San Xavier District
  - Town of Sahuarita
  - Coronado National Forest
  - Santa Rita Experimental Range and Wildlife Area

