

PIMA COUNTY TRANSPORTATION ADVISORY COMMITTEE

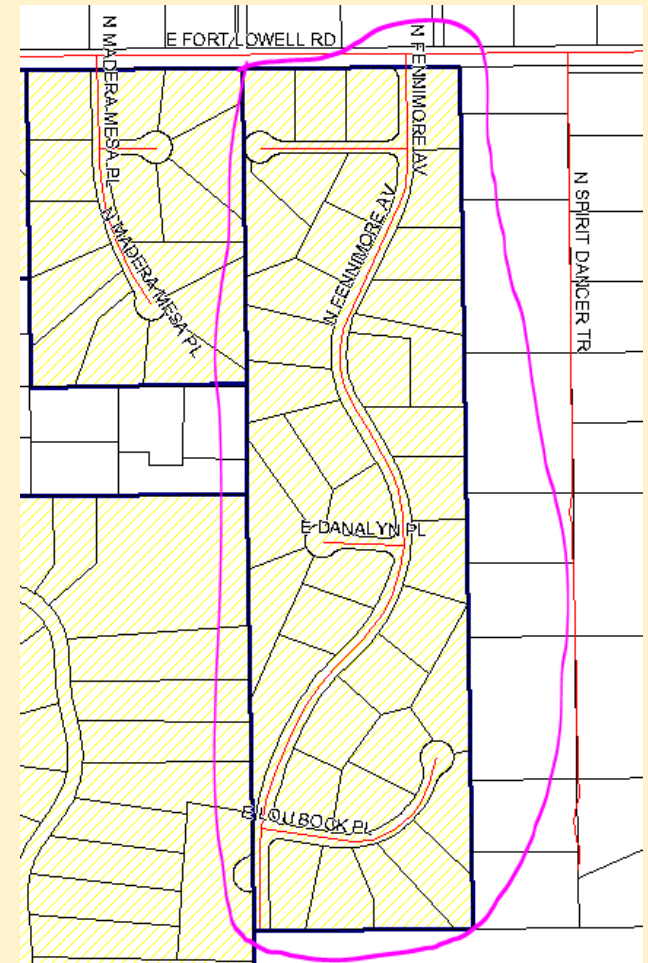
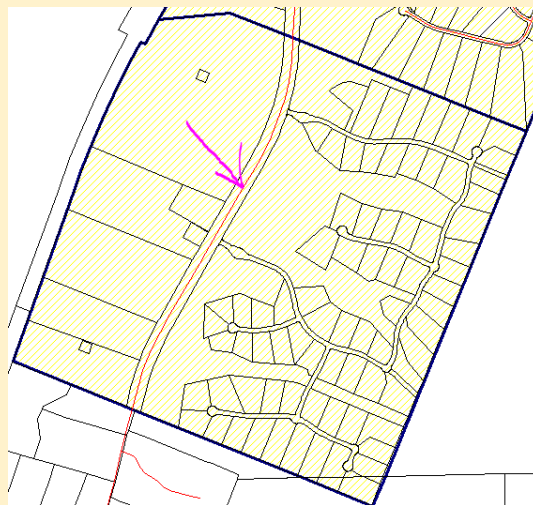
REGIONAL LOCAL ROAD REPAIR PROGRAM

NOVEMBER 28, 2017

STAFF RECOMMENDED REVISION PRESENTATION

REMOVE CANOA PRESERVE, REPLACE WITH SNELLER HILLS (1-39) IN YEAR 1 BASE

1. Was integrated due to length of street and parcel number (used to determine ADT).
2. Should not have been added due to lack of development and due to incomplete street length (overall).
3. Recommend removal of Canoa Preserve (1-80) (\$60,119).
4. Recommend replacement with Sneller Hills (1-39) (\$62,763). SNELLER HILLS is the logical choice due to rank and cost, per the preferred methodology.



| YEAR 1 BASE - ADT/Length | | | | | | | | |
|--------------------------|-----------|--------------|--------------|--------------------|---------------|------------------|--------------------|---------------|
| DISTRICT | # SUBD | # PARCELS | # Miles | BASE \$ | % of Total | ACLRD \$ | Total \$ | % of Total |
| BOS01 | 33 | 2,850 | 16.64 | \$1,290,121 | 35.8% | \$26,359 | \$1,316,480 | 34.4% |
| BOS02 | 5 | 438 | 3.07 | \$201,806 | 5.6% | \$41,252 | \$243,058 | 6.3% |
| BOS03 | 20 | 1,458 | 11.43 | \$911,734 | 25.3% | \$2,524 | \$914,258 | 23.9% |
| BOS04 | 15 | 1,101 | 11.31 | \$886,508 | 24.6% | \$26,691 | \$913,199 | 23.9% |
| BOS05 | 4 | 745 | 5.57 | \$313,522 | 8.7% | \$127,818 | \$441,340 | 11.5% |
| TOTAL | 77 | 6,592 | 48.02 | \$3,603,691 | 100.0% | \$224,645 | \$3,828,336 | 100.0% |

| STAFF REVISION YEAR 1 BASE - ADT/Length | | | | | | | | | | |
|---|-----------|--------------|--------------|--------------------|---------------|------------------|------------------|----------------|--------------------|---------------|
| DISTRICT | # SUBD | # PARCELS | # Miles | BASE \$ | % of Total | ORIG ACLRD \$ | REV ACLRD \$ | ADDITIONAL | Total \$ | % of Total |
| BOS01 | 33 | 2,850 | 16.64 | \$1,290,121 | 35.8% | \$26,359 | \$26,359 | \$0 | \$1,316,480 | 34.4% |
| BOS02 | 5 | 438 | 3.07 | \$201,806 | 5.6% | \$41,252 | \$41,252 | \$0 | \$243,058 | 6.3% |
| BOS03 | 20 | 1,458 | 11.43 | \$911,734 | 25.3% | \$2,524 | \$2,524 | \$0 | \$914,258 | 23.9% |
| BOS04 | 16 | 1,140 | 12.10 | \$886,508 | 24.6% | \$26,691 | \$29,335 | \$2,644 | \$915,843 | 23.9% |
| BOS05 | 4 | 745 | 5.57 | \$313,522 | 8.7% | \$127,818 | \$127,818 | \$0 | \$441,340 | 11.5% |
| TOTAL | 78 | 6,631 | 48.81 | \$3,603,691 | 100.0% | \$224,645 | \$227,289 | \$2,644 | \$3,830,980 | 100.0% |

| STAFF REVISION YEAR 1 BASE FUNDING: | | | | | | | | | | | |
|-------------------------------------|--|--------------|-------------|-------------|-----------|-------------|-------------|--------------------|--------------------|-----------------|---------------|
| LINE # | SUBDIVISION | BOS DISTRICT | MODAL PASER | CALC LENGTH | CALC ADT | ADT/ LENGTH | TREATMENT | DERIVED COST | BASE BALANCE | ACLRD BALANCE | RUNNING TOTAL |
| | | | \$3,603,691 | +ACLRD \$ | \$212,727 | = | \$3,816,418 | | | | |
| 1 | SABINO VISTA SOUTHEAST NO. 1 (1-47) | 1 | 5 | 562.44 | 480 | 0.853 | SEAL COAT | \$11,383 | \$1,290,121 | | \$11,383 |
| 2 | THE BLUFFS II (382-488) | 1 | 5 | 1519.03 | 1090 | 0.718 | SEAL COAT | \$22,785 | \$1,278,738 | | \$34,168 |
| 3 | FAIRFIELD SUNRISE EAST (1-520) | 1 | 5 | 5396.21 | 3780 | 0.700 | SEAL COAT | \$80,943 | \$1,255,953 | | \$115,111 |
| 4 | SABINO VALLEY (1-55) | 1 | 5 | 1155.60 | 580 | 0.502 | SEAL COAT | \$17,334 | \$1,175,010 | | \$132,445 |
| 5 | PONTATOC UPLANDS (1-26) | 1 | 5 | 831.59 | 370 | 0.445 | SEAL COAT | \$8,239 | \$1,157,676 | | \$140,684 |
| 6 | MONTIERRA(1-22) | 1 | 5 | 528.88 | 230 | 0.435 | SEAL COAT | \$7,933 | \$1,149,437 | | \$148,617 |
| 7 | LA CHOLLA BLUFFS | 1 | 5 | 1444.46 | 510 | 0.353 | SEAL COAT | \$21,667 | \$1,141,504 | | \$170,284 |
| 8 | KACHINA RIDGE(1-27) | 1 | 5 | 797.63 | 280 | 0.351 | SEAL COAT | \$11,964 | \$1,119,837 | | \$182,248 |
| 9 | MONA LISA II (1-75) | 1 | 5 | 2210.04 | 770 | 0.348 | SEAL COAT | \$33,151 | \$1,107,873 | | \$215,399 |
| 10 | ROSEVALE (1-137) | 1 | 5 | 4212.37 | 1400 | 0.332 | SEAL COAT | \$63,186 | \$1,074,722 | | \$278,585 |
| 11 | COUNTRYSIDE VISTA (387-602) | 1 | 5 | 6573.41 | 2150 | 0.327 | SEAL COAT | \$98,601 | \$1,011,536 | | \$377,186 |
| 12 | DESCANSO ACRES | 1 | 5 | 522.53 | 170 | 0.325 | SEAL COAT | \$7,838 | \$912,935 | | \$385,024 |
| 13 | ST JOHN'S PROPERTY (1-35) | 1 | 5 | 1206.23 | 390 | 0.323 | SEAL COAT | \$18,093 | \$905,097 | | \$403,117 |
| 14 | SUNCREST (1-127) | 1 | 5 | 4091.50 | 1300 | 0.318 | SEAL COAT | \$61,372 | \$887,004 | | \$464,490 |
| 15 | VISTA OESTE ESTATES (1-37) | 1 | 5 | 1263.23 | 390 | 0.309 | SEAL COAT | \$18,948 | \$825,631 | | \$483,438 |
| 16 | SANTA CATALINA ESTATES NO. 3 (150-182) | 1 | 5 | 1172.95 | 360 | 0.307 | SEAL COAT | \$17,594 | \$806,683 | | \$501,032 |
| 17 | PANORAMA RIDGE ESTATES (1-40) | 1 | 5 | 1346.00 | 410 | 0.305 | SEAL COAT | \$20,190 | \$789,089 | | \$521,222 |
| 18 | KACHINA MEADOWS(1-82) | 1 | 5 | 2894.72 | 830 | 0.287 | SEAL COAT | \$43,421 | \$768,899 | | \$564,643 |
| 19 | COUNTRYSIDE CROSSINGS (1-51) | 1 | 5 | 1856.32 | 530 | 0.286 | SEAL COAT | \$27,845 | \$725,478 | | \$592,488 |
| 20 | THE BLUFFS II (320-381) | 1 | 5 | 2225.10 | 630 | 0.283 | SEAL COAT | \$33,377 | \$697,633 | | \$625,864 |
| 21 | RANCHO ARBOLEDA (1-110) | 1 | 5 | 3931.69 | 1110 | 0.282 | SEAL COAT | \$58,975 | \$664,257 | | \$684,840 |
| 22 | CASAS ADOBES TERRACE (1-184) | 1 | 5 | 7729.15 | 2180 | 0.282 | SEAL COAT | \$115,937 | \$605,281 | | \$800,777 |
| 23 | MONTE CIELO (1-13) | 1 | 5 | 502.15 | 140 | 0.279 | SEAL COAT | \$7,532 | \$489,344 | | \$808,309 |
| 24 | THE BLUFFS PHASE II (489-598) | 1 | 5 | 4284.41 | 1130 | 0.264 | SEAL COAT | \$64,266 | \$481,812 | | \$872,576 |
| 25 | PROMONTORY (1-42) | 1 | 5 | 1708.65 | 450 | 0.263 | SEAL COAT | \$25,630 | \$417,545 | | \$898,205 |
| 26 | CANYON TERRACE (1-65) | 1 | 5 | 2519.18 | 660 | 0.262 | SEAL COAT | \$37,788 | \$391,916 | | \$935,993 |
| 27 | ORANGE GROVE VALLEY (1-115 & BLK 1) | 1 | 5 | 4654.00 | 1170 | 0.251 | SEAL COAT | \$69,810 | \$354,128 | | \$1,005,803 |
| 28 | WIEGAND ESTATES(1-17) | 1 | 5 | 686.16 | 170 | 0.248 | SEAL COAT | \$10,292 | \$284,318 | | \$1,016,095 |
| 29 | MANZANITA ESTATES (1-26) | 1 | 5 | 1055.20 | 260 | 0.246 | SEAL COAT | \$15,828 | \$274,026 | | \$1,031,924 |
| 30 | NORTH STAR ESTATES(1-98) | 1 | 5 | 4119.04 | 1010 | 0.245 | SEAL COAT | \$61,786 | \$258,197 | | \$1,093,709 |
| 31 | NORTHBRIDGE ESTATES | 1 | 5 | 6210.29 | 1520 | 0.245 | SEAL COAT | \$93,154 | \$196,412 | | \$1,186,864 |
| 32 | WINCHESTER RANCH (1-40) | 1 | 5 | 1767.55 | 430 | 0.243 | SEAL COAT | \$26,513 | \$103,257 | | \$1,213,377 |
| 33 | COUNTRYSIDE TERRACE (240-398) | 1 | 5 | 6873.57 | 1620 | 0.236 | SEAL COAT | \$103,104 | \$76,744 | \$26,359 | \$1,316,480 |
| | TOTAL OF DISTRICT 1 | | | | | | | \$1,316,480 | \$1,290,121 | \$26,359 | |
| 34 | MARSHALL PARK(1-9) | 2 | 5 | 174.80 | 100 | 0.572 | SEAL COAT | \$2,622 | \$201,806 | | \$2,622 |
| 35 | DESERT VIEW ADDITION | 2 | 5 | 2242.04 | 900 | 0.401 | SEAL COAT | \$33,631 | \$199,184 | | \$36,253 |
| 36 | CIELITO LINDO RESUB(105,107&109-114) | 2 | 5 | 478.18 | 120 | 0.251 | SEAL COAT | \$7,173 | \$165,553 | | \$43,425 |
| 37 | LOS RANCHITOS | 2 | 5 | 8722.24 | 2160 | 0.248 | SEAL COAT | \$130,834 | \$158,381 | | \$174,259 |
| 38 | LOS RANCHITOS NUMBER 7 | 2 | 5 | 4586.63 | 1100 | 0.240 | SEAL COAT | \$68,799 | \$27,547 | \$41,252 | \$243,058 |
| | TOTAL OF DISTRICT 2 | | | | | | | \$243,058 | \$201,806 | \$41,252 | |

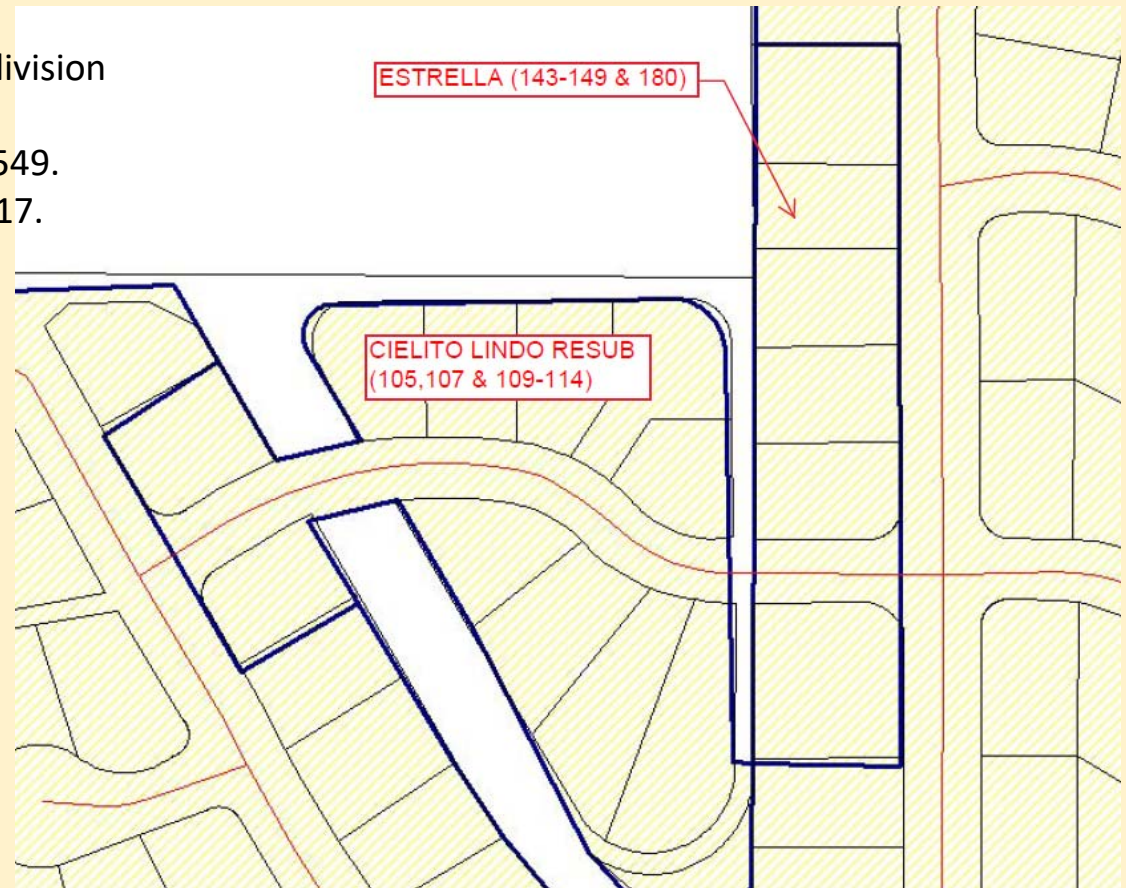
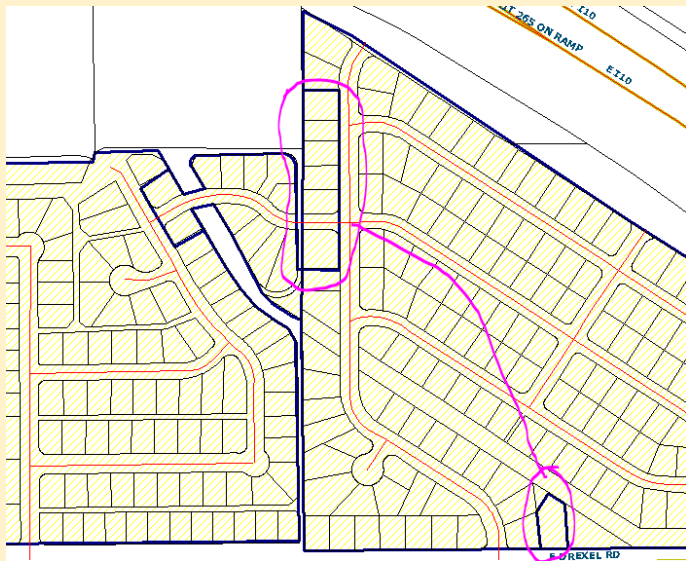
| STAFF REVISION YEAR 1 BASE FUNDING: | | | | | | | | | | | |
|-------------------------------------|--|--------------|-------------|-------------|----------|-------------|-----------|--------------|--------------|---------------|---------------|
| LINE # | SUBDIVISION | BOS DISTRICT | MODAL PASER | CALC LENGTH | CALC ADT | ADT/ LENGTH | TREATMENT | DERIVED COST | BASE BALANCE | ACLRD BALANCE | RUNNING TOTAL |
| 39 | BROOKWOOD (1-36) | 3 | 5 | 848.15 | 370 | 0.436 | SEAL COAT | \$12,722 | \$911,734 | | \$12,722 |
| 40 | MELODY LANE ESTATES NO. 2 | 3 | 5 | 1156.52 | 430 | 0.372 | SEAL COAT | \$17,348 | \$899,012 | | \$30,070 |
| 41 | BUENA TIERRA (1-37) | 3 | 5 | 978.25 | 350 | 0.358 | SEAL COAT | \$14,674 | \$881,664 | | \$44,744 |
| 42 | AGUA DULCE (1-60) | 3 | 5 | 1068.44 | 360 | 0.337 | SEAL COAT | \$16,027 | \$866,990 | | \$60,770 |
| 43 | PLUM ACRES | 3 | 5 | 890.92 | 290 | 0.326 | SEAL COAT | \$13,364 | \$850,964 | | \$74,134 |
| 44 | ROMERO PARK | 3 | 5 | 1676.52 | 540 | 0.322 | SEAL COAT | \$25,148 | \$837,600 | | \$99,282 |
| 45 | CASA DEL RIO (1-74) | 3 | 5 | 2466.39 | 770 | 0.312 | SEAL COAT | \$36,996 | \$812,452 | | \$136,278 |
| 46 | VISTA DEL LAGO | 3 | 5 | 1973.23 | 580 | 0.294 | SEAL COAT | \$29,598 | \$775,456 | | \$165,876 |
| 47 | PARADISE ESTATES (1-22) | 3 | 5 | 2871.08 | 830 | 0.289 | SEAL COAT | \$43,066 | \$745,858 | | \$208,942 |
| 48 | SHAMROCK MANOR (1-121) | 3 | 5 | 4320.08 | 1210 | 0.280 | SEAL COAT | \$64,801 | \$702,792 | | \$273,744 |
| 49 | BUENA VENTURA | 3 | 5 | 2872.93 | 790 | 0.275 | SEAL COAT | \$43,094 | \$637,990 | | \$316,838 |
| 50 | MELODY LANE ESTATES NO. 5 (1-40) | 3 | 5 | 1640.72 | 400 | 0.244 | SEAL COAT | \$24,611 | \$594,896 | | \$341,448 |
| 51 | MORELAND VISTA | 3 | 5 | 1514.83 | 340 | 0.224 | SEAL COAT | \$22,722 | \$570,286 | | \$364,171 |
| 52 | RIVER TERRACE (1-76) | 3 | 5 | 3565.45 | 790 | 0.222 | SEAL COAT | \$53,482 | \$547,563 | | \$417,652 |
| 53 | FALCON RIDGE (1-41) | 3 | 5 | 1877.89 | 410 | 0.218 | SEAL COAT | \$28,168 | \$494,082 | | \$445,821 |
| 54 | BLANCO ESTATES (1-71) | 3 | 5 | 3530.66 | 730 | 0.207 | SEAL COAT | \$52,960 | \$465,913 | | \$498,781 |
| 55 | STAR VALLEY BLOCK 18 | 3 | 5 | 14245.85 | 2890 | 0.203 | SEAL COAT | \$213,688 | \$412,953 | | \$712,469 |
| 56 | TUCSON MOUNTAIN RANCH (51-182) | 3 | 5 | 7091.22 | 1410 | 0.199 | SEAL COAT | \$106,368 | \$199,265 | | \$818,837 |
| 57 | MILLSTONE MANOR NO. 4 | 3 | 5 | 5200.29 | 990 | 0.190 | SEAL COAT | \$87,224 | \$92,897 | | \$906,061 |
| 58 | WONDERLAND (26-35) | 3 | 5 | 546.51 | 100 | 0.183 | SEAL COAT | \$8,198 | \$5,673 | \$2,524 | \$914,258 |
| | TOTAL OF DISTRICT 3 | | | | | | | \$914,258 | \$911,734 | \$2,524 | |
| 59 | NEW TUCSON UNIT NO. 21 RESUB OF BLK 1 | 4 | 5 | 1343.24 | 440 | 0.328 | SEAL COAT | \$20,149 | \$886,508 | | \$20,149 |
| 60 | NEW TUCSON UNIT NO. 28 BLOCKS 15-18 | 4 | 5 | 3317.06 | 1040 | 0.314 | SEAL COAT | \$49,756 | \$866,359 | | \$69,905 |
| 61 | MOUNTAIN GATE ESTATES (1-15) | 4 | 5 | 631.46 | 150 | 0.238 | SEAL COAT | \$9,472 | \$816,603 | | \$79,376 |
| 62 | NEW TUCSON UNIT NO. 1 (1-127) | 4 | 5 | 5407.05 | 1270 | 0.235 | SEAL COAT | \$81,106 | \$807,132 | | \$160,482 |
| 63 | DESCANSO ESTATES (44-65) | 4 | 5 | 972.53 | 220 | 0.226 | SEAL COAT | \$14,588 | \$726,026 | | \$175,070 |
| 64 | CANOA PRESERVE (1-80) | 4 | 5 | 4007.94 | 870 | 0.217 | SEAL COAT | \$60,119 | | | |
| 64 | SNELLER HILLS (1-39) | 4 | 5 | 4184.20 | 390 | 0.093 | SEAL COAT | \$62,763 | \$711,438 | \$2,644 | \$237,833 |
| 65 | RANCHO DEL LAGO (101-206) | 4 | 5 | 5776.14 | 1150 | 0.199 | SEAL COAT | \$86,642 | \$651,319 | | \$324,475 |
| 66 | NEW TUCSON UNIT NO. 23 (140-261) | 4 | 5 | 7096.67 | 1210 | 0.171 | SEAL COAT | \$106,450 | \$564,677 | | \$428,282 |
| 67 | SANTA RITA BEL AIR ESTATES (1-125) | 4 | 5 | 7559.29 | 1270 | 0.168 | SEAL COAT | \$113,232 | \$458,226 | | \$541,513 |
| 68 | GOLEMBIESKI ADDITION (1-4) | 4 | 5 | 253.88 | 40 | 0.158 | SEAL COAT | \$3,808 | \$344,995 | | \$545,321 |
| 69 | SUNSET NORTH (1-47) | 4 | 5 | 3403.44 | 520 | 0.153 | SEAL COAT | \$49,492 | \$341,187 | | \$594,813 |
| 70 | NEW TUCSON UNIT NO. 21 LOTS 1-62 & BLOCK 1 | 4 | 5 | 4016.27 | 600 | 0.149 | SEAL COAT | \$60,244 | \$291,695 | | \$655,057 |
| 71 | SANTA RITA BEL AIR ESTATES (151-174) | 4 | 5 | 1581.69 | 230 | 0.145 | SEAL COAT | \$23,725 | \$231,451 | | \$678,782 |
| 72 | NEW TUCSON UNIT NO. 27 | 4 | 5 | 7463.91 | 1070 | 0.143 | SEAL COAT | \$111,959 | \$207,726 | | \$790,741 |
| 73 | BEL AIR RANCH ESTATES (284-375) | 4 | 5 | 6886.46 | 930 | 0.135 | SEAL COAT | \$122,458 | \$95,767 | \$26,691 | \$913,199 |
| | TOTAL OF DISTRICT 4 | | | | | | | \$975,962 | \$886,508 | \$26,691 | |
| 74 | SALIDA DEL SOL V (1-109) | 5 | 5 | 3831.33 | 1100 | 0.287 | SEAL COAT | \$57,470 | \$313,522 | | \$57,470 |
| 75 | MISSION TERRACE NO.3 (7-28) | 5 | 5 | 6231.88 | 1740 | 0.279 | SEAL COAT | \$93,478 | \$256,052 | | \$150,948 |
| 76 | SALIDA DEL SOL (1-274) | 5 | 5 | 10741.73 | 2720 | 0.253 | SEAL COAT | \$161,126 | \$162,574 | | \$312,074 |
| 77 | MISSION TERRACE | 5 | 5 | 8617.73 | 1890 | 0.219 | SEAL COAT | \$129,266 | \$1,448 | \$127,818 | \$441,340 |
| | TOTAL OF DISTRICT 5 | | | | | | | \$441,340 | \$313,522 | \$127,818 | |
| | TOTAL OF ALL DISTRICTS | | | | | | | \$3,891,099 | \$3,603,691 | \$224,645 | |

| STAFF REVISION YEAR 1 BASE FUNDING: | | | | | | | | | | | |
|-------------------------------------|--|--------------|-------------|-------------|-----------|-------------|-----------|--------------|--------------|---------------|---------------|
| LINE # | SUBDIVISION | BOS DISTRICT | MODAL PASER | CALC LENGTH | CALC ADT | ADT/ LENGTH | TREATMENT | DERIVED COST | BASE BALANCE | ACLRD BALANCE | RUNNING TOTAL |
| | | | | \$3,603,691 | +ACLRD \$ | \$227,289 | = | \$3,830,980 | | | |
| 1 | SABINO VISTA SOUTHEAST NO. 1 (1-47) | 1 | 5 | 562.44 | 480 | 0.853 | SEAL COAT | \$11,383 | \$1,290,121 | | \$11,383 |
| 2 | THE BLUFFS II (382-488) | 1 | 5 | 1519.03 | 1090 | 0.718 | SEAL COAT | \$22,785 | \$1,278,738 | | \$34,168 |
| 3 | FAIRFIELD SUNRISE EAST (1-520) | 1 | 5 | 5396.21 | 3780 | 0.700 | SEAL COAT | \$80,943 | \$1,255,953 | | \$115,111 |
| 4 | SABINO VALLEY (1-55) | 1 | 5 | 1155.60 | 580 | 0.502 | SEAL COAT | \$17,334 | \$1,175,010 | | \$132,445 |
| 5 | PONTATOC UPLANDS (1-26) | 1 | 5 | 831.59 | 370 | 0.445 | SEAL COAT | \$8,239 | \$1,157,676 | | \$140,684 |
| 6 | MONTIERRA(1-22) | 1 | 5 | 528.88 | 230 | 0.435 | SEAL COAT | \$7,933 | \$1,149,437 | | \$148,617 |
| 7 | LA CHOLLA BLUFFS | 1 | 5 | 1444.46 | 510 | 0.353 | SEAL COAT | \$21,667 | \$1,141,504 | | \$170,284 |
| 8 | KACHINA RIDGE(1-27) | 1 | 5 | 797.63 | 280 | 0.351 | SEAL COAT | \$11,964 | \$1,119,837 | | \$182,248 |
| 9 | MONA LISA II (1-75) | 1 | 5 | 2210.04 | 770 | 0.348 | SEAL COAT | \$33,151 | \$1,107,873 | | \$215,399 |
| 10 | ROSEVALE (1-137) | 1 | 5 | 4212.37 | 1400 | 0.332 | SEAL COAT | \$63,186 | \$1,074,722 | | \$278,585 |
| 11 | COUNTRYSIDE VISTA (387-602) | 1 | 5 | 6573.41 | 2150 | 0.327 | SEAL COAT | \$98,601 | \$1,011,536 | | \$377,186 |
| 12 | DESCANSO ACRES | 1 | 5 | 522.53 | 170 | 0.325 | SEAL COAT | \$7,838 | \$912,935 | | \$385,024 |
| 13 | ST JOHN'S PROPERTY (1-35) | 1 | 5 | 1206.23 | 390 | 0.323 | SEAL COAT | \$18,093 | \$905,097 | | \$403,117 |
| 14 | SUNCREST (1-127) | 1 | 5 | 4091.50 | 1300 | 0.318 | SEAL COAT | \$61,372 | \$887,004 | | \$464,490 |
| 15 | VISTA OESTE ESTATES (1-37) | 1 | 5 | 1263.23 | 390 | 0.309 | SEAL COAT | \$18,948 | \$825,631 | | \$483,438 |
| 16 | SANTA CATALINA ESTATES NO. 3 (150-182) | 1 | 5 | 1172.95 | 360 | 0.307 | SEAL COAT | \$17,594 | \$806,683 | | \$501,032 |
| 17 | PANORAMA RIDGE ESTATES (1-40) | 1 | 5 | 1346.00 | 410 | 0.305 | SEAL COAT | \$20,190 | \$789,089 | | \$521,222 |
| 18 | KACHINA MEADOWS(1-82) | 1 | 5 | 2894.72 | 830 | 0.287 | SEAL COAT | \$43,421 | \$768,899 | | \$564,643 |
| 19 | COUNTRYSIDE CROSSINGS (1-51) | 1 | 5 | 1856.32 | 530 | 0.286 | SEAL COAT | \$27,845 | \$725,478 | | \$592,488 |
| 20 | THE BLUFFS II (320-381) | 1 | 5 | 2225.10 | 630 | 0.283 | SEAL COAT | \$33,377 | \$697,633 | | \$625,864 |
| 21 | RANCHO ARBOLEDA (1-110) | 1 | 5 | 3931.69 | 1110 | 0.282 | SEAL COAT | \$58,975 | \$664,257 | | \$684,840 |
| 22 | CASAS ADOBES TERRACE (1-184) | 1 | 5 | 7729.15 | 2180 | 0.282 | SEAL COAT | \$115,937 | \$605,281 | | \$800,777 |
| 23 | MONTE CIELO (1-13) | 1 | 5 | 502.15 | 140 | 0.279 | SEAL COAT | \$7,532 | \$489,344 | | \$808,309 |
| 24 | THE BLUFFS PHASE II (489-598) | 1 | 5 | 4284.41 | 1130 | 0.264 | SEAL COAT | \$64,266 | \$481,812 | | \$872,576 |
| 25 | PROMONTORY (1-42) | 1 | 5 | 1708.65 | 450 | 0.263 | SEAL COAT | \$25,630 | \$417,545 | | \$898,205 |
| 26 | CANYON TERRACE (1-65) | 1 | 5 | 2519.18 | 660 | 0.262 | SEAL COAT | \$37,788 | \$391,916 | | \$935,993 |
| 27 | ORANGE GROVE VALLEY (1-115 & BLK 1) | 1 | 5 | 4654.00 | 1170 | 0.251 | SEAL COAT | \$69,810 | \$354,128 | | \$1,005,803 |
| 28 | WIEGAND ESTATES(1-17) | 1 | 5 | 686.16 | 170 | 0.248 | SEAL COAT | \$10,292 | \$284,318 | | \$1,016,095 |
| 29 | MANZANITA ESTATES (1-26) | 1 | 5 | 1055.20 | 260 | 0.246 | SEAL COAT | \$15,828 | \$274,026 | | \$1,031,924 |
| 30 | NORTH STAR ESTATES(1-98) | 1 | 5 | 4119.04 | 1010 | 0.245 | SEAL COAT | \$61,786 | \$258,197 | | \$1,093,709 |
| 31 | NORTHRIDGE ESTATES | 1 | 5 | 6210.29 | 1520 | 0.245 | SEAL COAT | \$93,154 | \$196,412 | | \$1,186,864 |
| 32 | WINCHESTER RANCH (1-40) | 1 | 5 | 1767.55 | 430 | 0.243 | SEAL COAT | \$26,513 | \$103,257 | | \$1,213,377 |
| 33 | COUNTRYSIDE TERRACE (240-398) | 1 | 5 | 6873.57 | 1620 | 0.236 | SEAL COAT | \$103,104 | \$76,744 | \$26,359 | \$1,316,480 |
| | TOTAL OF DISTRICT 1 | | | | | | | \$1,316,480 | \$1,290,121 | \$26,359 | |
| 34 | MARSHALL PARK(1-9) | 2 | 5 | 174.80 | 100 | 0.572 | SEAL COAT | \$2,622 | \$201,806 | | \$2,622 |
| 35 | DESERT VIEW ADDITION | 2 | 5 | 2242.04 | 900 | 0.401 | SEAL COAT | \$33,631 | \$199,184 | | \$36,253 |
| 36 | CIELITO LINDO RESUB(105,107&109-114) | 2 | 5 | 478.18 | 120 | 0.251 | SEAL COAT | \$7,173 | \$165,553 | | \$43,425 |
| 37 | LOS RANCHITOS | 2 | 5 | 8722.24 | 2160 | 0.248 | SEAL COAT | \$130,834 | \$158,381 | | \$174,259 |
| 38 | LOS RANCHITOS NUMBER 7 | 2 | 5 | 4586.63 | 1100 | 0.240 | SEAL COAT | \$68,799 | \$27,547 | \$41,252 | \$243,058 |
| | TOTAL OF DISTRICT 2 | | | | | | | \$243,058 | \$201,806 | \$41,252 | |

| STAFF REVISION YEAR 1 BASE FUNDING: | | | | | | | | | | | |
|-------------------------------------|--|--------------|-------------|-------------|----------|-------------|-----------|--------------|--------------|---------------|---------------|
| LINE # | SUBDIVISION | BOS DISTRICT | MODAL PASER | CALC LENGTH | CALC ADT | ADT/ LENGTH | TREATMENT | DERIVED COST | BASE BALANCE | ACLRD BALANCE | RUNNING TOTAL |
| 39 | BROOKWOOD (1-36) | 3 | 5 | 848.15 | 370 | 0.436 | SEAL COAT | \$12,722 | \$911,734 | | \$12,722 |
| 40 | MELODY LANE ESTATES NO. 2 | 3 | 5 | 1156.52 | 430 | 0.372 | SEAL COAT | \$17,348 | \$899,012 | | \$30,070 |
| 41 | BUENA TIERRA (1-37) | 3 | 5 | 978.25 | 350 | 0.358 | SEAL COAT | \$14,674 | \$881,664 | | \$44,744 |
| 42 | AGUA DULCE (1-60) | 3 | 5 | 1068.44 | 360 | 0.337 | SEAL COAT | \$16,027 | \$866,990 | | \$60,770 |
| 43 | PLUM ACRES | 3 | 5 | 890.92 | 290 | 0.326 | SEAL COAT | \$13,364 | \$850,964 | | \$74,134 |
| 44 | ROMERO PARK | 3 | 5 | 1676.52 | 540 | 0.322 | SEAL COAT | \$25,148 | \$837,600 | | \$99,282 |
| 45 | CASA DEL RIO (1-74) | 3 | 5 | 2466.39 | 770 | 0.312 | SEAL COAT | \$36,996 | \$812,452 | | \$136,278 |
| 46 | VISTA DEL LAGO | 3 | 5 | 1973.23 | 580 | 0.294 | SEAL COAT | \$29,598 | \$775,456 | | \$165,876 |
| 47 | PARADISE ESTATES (1-22) | 3 | 5 | 2871.08 | 830 | 0.289 | SEAL COAT | \$43,066 | \$745,858 | | \$208,942 |
| 48 | SHAMROCK MANOR (1-121) | 3 | 5 | 4320.08 | 1210 | 0.280 | SEAL COAT | \$64,801 | \$702,792 | | \$273,744 |
| 49 | BUENA VENTURA | 3 | 5 | 2872.93 | 790 | 0.275 | SEAL COAT | \$43,094 | \$637,990 | | \$316,838 |
| 50 | MELODY LANE ESTATES NO. 5 (1-40) | 3 | 5 | 1640.72 | 400 | 0.244 | SEAL COAT | \$24,611 | \$594,896 | | \$341,448 |
| 51 | MORELAND VISTA | 3 | 5 | 1514.83 | 340 | 0.224 | SEAL COAT | \$22,722 | \$570,286 | | \$364,171 |
| 52 | RIVER TERRACE (1-76) | 3 | 5 | 3565.45 | 790 | 0.222 | SEAL COAT | \$53,482 | \$547,563 | | \$417,652 |
| 53 | FALCON RIDGE (1-41) | 3 | 5 | 1877.89 | 410 | 0.218 | SEAL COAT | \$28,168 | \$494,082 | | \$445,821 |
| 54 | BLANCO ESTATES (1-71) | 3 | 5 | 3530.66 | 730 | 0.207 | SEAL COAT | \$52,960 | \$465,913 | | \$498,781 |
| 55 | STAR VALLEY BLOCK 18 | 3 | 5 | 14245.85 | 2890 | 0.203 | SEAL COAT | \$213,688 | \$412,953 | | \$712,469 |
| 56 | TUCSON MOUNTAIN RANCH (51-182) | 3 | 5 | 7091.22 | 1410 | 0.199 | SEAL COAT | \$106,368 | \$199,265 | | \$818,837 |
| 57 | MILLSTONE MANOR NO. 4 | 3 | 5 | 5200.29 | 990 | 0.190 | SEAL COAT | \$87,224 | \$92,897 | | \$906,061 |
| 58 | WONDERLAND (26-35) | 3 | 5 | 546.51 | 100 | 0.183 | SEAL COAT | \$8,198 | \$5,673 | \$2,524 | \$914,258 |
| | TOTAL OF DISTRICT 3 | | | | | | | \$914,258 | \$911,734 | \$2,524 | |
| 59 | NEW TUCSON UNIT NO. 21 RESUB OF BLK 1 | 4 | 5 | 1343.24 | 440 | 0.328 | SEAL COAT | \$20,149 | \$886,508 | | \$20,149 |
| 60 | NEW TUCSON UNIT NO. 28 BLOCKS 15-18 | 4 | 5 | 3317.06 | 1040 | 0.314 | SEAL COAT | \$49,756 | \$866,359 | | \$69,905 |
| 61 | MOUNTAIN GATE ESTATES (1-15) | 4 | 5 | 631.46 | 150 | 0.238 | SEAL COAT | \$9,472 | \$816,603 | | \$79,376 |
| 62 | NEW TUCSON UNIT NO. 1 (1-127) | 4 | 5 | 5407.05 | 1270 | 0.235 | SEAL COAT | \$81,106 | \$807,132 | | \$160,482 |
| 63 | DESCANSO ESTATES (44-65) | 4 | 5 | 972.53 | 220 | 0.226 | SEAL COAT | \$14,588 | \$726,026 | | \$175,070 |
| 29 | SNELLER HILLS (1-39) | 4 | 5 | 4184.20 | 390 | 0.093 | SEAL COAT | \$62,763 | \$711,438 | \$2,644 | \$237,833 |
| 65 | RANCHO DEL LAGO (101-206) | 4 | 5 | 5776.14 | 1150 | 0.199 | SEAL COAT | \$86,642 | \$648,675 | | \$324,475 |
| 66 | NEW TUCSON UNIT NO. 23 (140-261) | 4 | 5 | 7096.67 | 1210 | 0.171 | SEAL COAT | \$106,450 | \$562,033 | | \$430,925 |
| 67 | SANTA RITA BEL AIR ESTATES (1-125) | 4 | 5 | 7559.29 | 1270 | 0.168 | SEAL COAT | \$113,232 | \$455,583 | | \$544,157 |
| 68 | GOLEMBIESKI ADDITION (1-4) | 4 | 5 | 253.88 | 40 | 0.158 | SEAL COAT | \$3,808 | \$342,351 | | \$547,965 |
| 69 | SUNSET NORTH (1-47) | 4 | 5 | 3403.44 | 520 | 0.153 | SEAL COAT | \$49,492 | \$338,543 | | \$597,457 |
| 70 | NEW TUCSON UNIT NO. 21 LOTS 1-62 & BLOCK 1 | 4 | 5 | 4016.27 | 600 | 0.149 | SEAL COAT | \$60,244 | \$289,051 | | \$657,701 |
| 71 | SANTA RITA BEL AIR ESTATES (151-174) | 4 | 5 | 1581.69 | 230 | 0.145 | SEAL COAT | \$23,725 | \$228,807 | | \$681,426 |
| 72 | NEW TUCSON UNIT NO. 27 | 4 | 5 | 7463.91 | 1070 | 0.143 | SEAL COAT | \$111,959 | \$205,082 | | \$793,385 |
| 73 | BEL AIR RANCH ESTATES (284-375) | 4 | 5 | 6886.46 | 930 | 0.135 | SEAL COAT | \$122,458 | \$93,123 | \$29,335 | \$915,843 |
| | TOTAL OF DISTRICT 4 | | | | | | | \$915,843 | \$886,508 | \$29,335 | |
| 74 | SALIDA DEL SOL V (1-109) | 5 | 5 | 3831.33 | 1100 | 0.287 | SEAL COAT | \$57,470 | \$313,522 | | \$57,470 |
| 75 | MISSION TERRACE NO.3 (7-28) | 5 | 5 | 6231.88 | 1740 | 0.279 | SEAL COAT | \$93,478 | \$256,052 | | \$150,948 |
| 76 | SALIDA DEL SOL (1-274) | 5 | 5 | 10741.73 | 2720 | 0.253 | SEAL COAT | \$161,126 | \$162,574 | | \$312,074 |
| 77 | MISSION TERRACE | 5 | 5 | 8617.73 | 1890 | 0.219 | SEAL COAT | \$129,266 | \$1,448 | \$127,818 | \$441,340 |
| | TOTAL OF DISTRICT 5 | | | | | | | \$441,340 | \$313,522 | \$127,818 | |
| | TOTAL OF ALL DISTRICTS | | | | | | | \$3,830,980 | \$3,603,691 | \$227,289 | |

ADD ESTRELLA (143-149 & 180) TO YEAR 1 ACCELERATED

1. Was initially passed over due to length and incomplete street.
2. Should have been added with subsequent subdivision to make complete street segment.
3. Remaining District 2 Accelerated funding is \$8,549.
4. If added, remaining Accelerated would be \$6,817.



| YEAR 1 ACCELERATED - ADT/FT | | | | | | | | |
|-----------------------------|-----------|--------------|--------------|--------------------|---------------|--------------------|---------------|-----------------|
| DISTRICT | # SUBD | # PARCELS | # Miles | ACLRD \$ | % of ACLRD | Total \$ Used | % of Total | Difference |
| BOS01 | 19 | 1,448 | 15.16 | \$1,337,861 | 32.5% | \$1,335,292 | 32.7% | \$2,570 |
| BOS02 | 6 | 445 | 4.52 | \$338,495 | 8.2% | \$329,946 | 8.1% | \$8,549 |
| BOS03 | 13 | 845 | 11.17 | \$1,047,723 | 25.5% | \$1,044,659 | 25.6% | \$3,063 |
| BOS04 | 14 | 638 | 10.51 | \$886,534 | 21.6% | \$882,353 | 21.6% | \$4,181 |
| BOS05 | 3 | 670 | 6.21 | \$499,683 | 12.2% | \$492,019 | 12.0% | \$7,664 |
| TOTAL | 55 | 4,046 | 47.57 | \$4,110,296 | 100.0% | \$4,084,269 | 100.0% | \$26,027 |

| STAFF REVISION YEAR 1 ACCELERATED - ADT/FT | | | | | | | | | |
|--|-----------|--------------|--------------|--------------------|---------------|------------------|--------------------|---------------|-----------------|
| DISTRICT | # SUBD | # PARCELS | # Miles | ACLRD \$ | % of ACLRD | Additional | Total \$ Used | % of Total | Difference |
| BOS01 | 19 | 1,448 | 15.16 | \$1,337,861 | 32.5% | \$0 | \$1,335,292 | 32.7% | \$2,570 |
| BOS02 | 7 | 452 | 4.54 | \$338,495 | 8.2% | \$0 | \$331,678 | 8.1% | \$6,817 |
| BOS03 | 13 | 845 | 11.17 | \$1,047,723 | 25.5% | \$0 | \$1,044,659 | 25.6% | \$3,063 |
| BOS04 | 14 | 638 | 10.51 | \$886,534 | 21.6% | \$2,644 | \$884,997 | 21.6% | \$1,537 |
| BOS05 | 3 | 670 | 6.21 | \$499,683 | 12.2% | \$0 | \$492,019 | 12.0% | \$7,664 |
| TOTAL | 56 | 4,053 | 47.59 | \$4,110,296 | 100.0% | \$2,644.0 | \$4,088,645 | 100.0% | \$21,651 |

| STAFF REVISION YEAR 1 ACCELERATED FUNDING: | | | | | | | | | | | |
|--|--|--------------|-------------|---------------|-------------|--------------|------------------|---------------------|--------------|------------------|---------------------|
| LINE # | SUBDIVISION | BOS DISTRICT | MODAL PASER | CALC LENGTH | CALC ADT | ADT/ LENGTH | TREATMEN T | DERIVED COST | BASE BALANCE | ACLRD BALANCE | RUNNING TOTAL |
| | | | | | \$4,334,941 | - TO BASE | \$224,645 | = | \$4,110,296 | | |
| 1 | FLECHA CAIDA RANCH ESTATES NO. 2 | 1 | 5 | 3309.09 | 720 | 0.218 | SEAL COAT | \$77,695 | | \$1,260,166 | \$77,695 |
| 2 | SABINO CREST ESTATES (1-13) | 1 | 5 | 610.65 | 130 | 0.213 | SEAL COAT | \$9,160 | | \$1,251,006 | \$86,855 |
| 3 | BLACK HORSE (1-411) | 1 | 5 | 19938.43 | 4180 | 0.210 | SEAL COAT | \$274,844 | | \$976,163 | \$361,698 |
| 4 | SHADOW VIEW ESTATES (1-85) | 1 | 5 | 4350.05 | 880 | 0.202 | SEAL COAT | \$65,251 | | \$910,912 | \$426,949 |
| 5 | SABINO CREEK (1-98) | 1 | 5 | 5190.75 | 980 | 0.189 | SEAL COAT | \$77,861 | | \$833,051 | \$504,810 |
| 6 | CATALINA FOOTHILLS ESTATES NO. 8 (1-131) | 1 | 5 | 7308.50 | 1330 | 0.182 | SEAL COAT | \$111,666 | | \$721,384 | \$616,477 |
| 7 | MONTEBELLA (1-42) | 1 | 5 | 2413.93 | 430 | 0.178 | SEAL COAT | \$36,209 | | \$685,175 | \$652,686 |
| 8 | ALTA VISTA VILLAGE II (1-28) | 1 | 5 | 1635.51 | 290 | 0.177 | SEAL COAT | \$24,533 | | \$660,643 | \$677,218 |
| 9 | SABINO VISTA NO. 3 (1-28) | 1 | 5 | 1582.80 | 280 | 0.177 | SEAL COAT | \$23,742 | | \$636,901 | \$700,960 |
| 10 | TIERRA BRAVA ESTATES(1-27) | 1 | 5 | 1589.41 | 280 | 0.176 | SEAL COAT | \$23,841 | | \$613,059 | \$724,802 |
| 11 | SABINO VISTA NO. 5 (1-30) | 1 | 5 | 1730.51 | 300 | 0.173 | SEAL COAT | \$25,958 | | \$587,102 | \$750,759 |
| 12 | STONE CREEK(1-41) | 1 | 5 | 2569.33 | 440 | 0.171 | SEAL COAT | \$38,540 | | \$548,562 | \$789,299 |
| 13 | QUAIL CANYON (100-234) | 1 | 5 | 8251.30 | 1370 | 0.166 | SEAL COAT | \$232,311 | | \$316,250 | \$1,021,611 |
| 14 | ALTA VISTA ESTATES (1-124) | 1 | 5 | 7208.31 | 1100 | 0.153 | SEAL COAT | \$101,086 | | \$215,164 | \$1,122,697 |
| 15 | CASAS ADOBES POMELO ESTATES (1-29) | 1 | 5 | 2002.66 | 300 | 0.150 | SEAL COAT | \$30,040 | | \$185,124 | \$1,152,737 |
| 16 | MOUNTAIN VISTA ESTATES (1-38) | 1 | 5 | 2584.16 | 380 | 0.147 | SEAL COAT | \$65,821 | | \$119,304 | \$1,218,557 |
| 17 | THE BLUFFS II(249-319) | 1 | 5 | 5058.82 | 740 | 0.146 | SEAL COAT | \$75,882 | | \$43,421 | \$1,294,440 |
| 18 | ALTA VISTA VILLAGE I (1-16) | 1 | 5 | 1103.61 | 160 | 0.145 | SEAL COAT | \$16,554 | | \$26,867 | \$1,310,994 |
| 19 | LAS VISTAS ENCANTADAS (1-19) | 1 | 5 | 1619.85 | 190 | 0.117 | SEAL COAT | \$24,298 | | \$2,569 | \$1,335,292 |
| | TOTAL OF DISTRICT 1 | | | | | | | \$ 1,335,292 | | \$ 2,570 | \$ 1,337,861 |
| | ESTRELLA(143-149&180) | 2 | 5 | 115.46 | 70 | 0.606 | SEAL COAT | \$ 1,732 | | \$336,763 | \$ 1,732 |
| 20 | ANNAJO ESTATES (1-10) | 2 | 5 | 452.69 | 100 | 0.221 | SEAL COAT | \$6,790 | | \$329,973 | \$8,522 |
| 21 | SKY LINE RANCHOS | 2 | 5 | 4430.05 | 970 | 0.219 | SEAL COAT | \$66,451 | | \$263,522 | \$74,973 |
| 22 | HIGHLAND MANOR ADDITION (1-12) | 2 | 5 | 552.08 | 120 | 0.217 | SEAL COAT | \$8,281 | | \$255,241 | \$83,254 |
| 23 | TRILBY TERRACE (1-10) | 2 | 5 | 446.09 | 90 | 0.202 | SEAL COAT | \$6,691 | | \$248,549 | \$89,946 |
| 24 | LOS RANCHITOS NUMBER 8 | 2 | 5 | 16897.58 | 3020 | 0.179 | SEAL COAT | \$225,696 | | \$22,853 | \$315,642 |
| 25 | BUTTERFIELD BUSINESS CENTER (36- 50) | 2 | 5 | 1069.07 | 150 | 0.140 | SEAL COAT | \$16,036 | | \$6,817 | \$331,678 |
| | TOTAL OF DISTRICT 2 | | | | | | | \$ 331,678 | | \$ 6,817 | \$ 338,495 |

| STAFF REVISION YEAR 1 ACCELERATED FUNDING: | | | | | | | | | | | |
|--|---------------------------------------|--------------|-------------|-------------|----------|-------------|------------|---------------------|----------------|------------------|---------------------|
| LINE # | SUBDIVISION | BOS DISTRICT | MODAL PASER | CALC LENGTH | CALC ADT | ADT/ LENGTH | TREATMEN T | DERIVED COST | BASE BALANCE | ACLRD BALANCE | RUNNING TOTAL |
| 26 | CAMINO VERDE ESTATES (1-14) | 3 | 5 | 778.43 | 140 | 0.180 | SEAL COAT | \$11,676 | | \$1,036,047 | \$11,676 |
| 27 | TUCSON MOUNTAIN RANCH (1-50) | 3 | 5 | 2966.55 | 510 | 0.172 | SEAL COAT | \$44,498 | | \$991,548 | \$56,175 |
| 28 | HUNTER SUBDIVISION NO. 4 (1-64) | 3 | 5 | 3857.93 | 660 | 0.171 | SEAL COAT | \$57,869 | | \$933,679 | \$114,044 |
| 29 | LA PUERTA DEL NORTE | 3 | 5 | 5672.65 | 940 | 0.166 | SEAL COAT | \$85,090 | | \$848,590 | \$199,133 |
| 30 | TUCSONITA | 3 | 5 | 4541.66 | 750 | 0.165 | SEAL COAT | \$131,438 | | \$717,152 | \$330,571 |
| 31 | BLANCO ESTATES (72-162) | 3 | 5 | 5518.13 | 910 | 0.165 | SEAL COAT | \$82,772 | | \$634,380 | \$413,343 |
| 32 | TUCSON AVRA WEST II (1-8) | 3 | 5 | 497.96 | 80 | 0.161 | SEAL COAT | \$7,469 | | \$626,911 | \$420,812 |
| 33 | GIBSON TRACT | 3 | 5 | 2863.56 | 440 | 0.154 | SEAL COAT | \$22,339 | | \$604,572 | \$443,151 |
| 34 | BLANCO ESTATES (163-335) | 3 | 5 | 12840.86 | 1740 | 0.136 | SEAL COAT | \$310,167 | | \$294,405 | \$753,318 |
| 35 | STAR VALLEY (153-232) | 3 | 5 | 6287.91 | 810 | 0.129 | SEAL COAT | \$94,319 | | \$200,087 | \$847,636 |
| 36 | PICTURE ROCKS WEST (1-65) | 3 | 5 | 5675.43 | 650 | 0.115 | SEAL COAT | \$85,131 | | \$114,955 | \$932,768 |
| 37 | DEL CERRO ESTATES NO. 4 (1-60) | 3 | 5 | 5455.26 | 600 | 0.110 | SEAL COAT | \$81,829 | | \$33,126 | \$1,014,597 |
| 38 | SHAMROCK CENTER (1-23) BLK. 1 | 3 | 5 | 2004.17 | 220 | 0.110 | SEAL COAT | \$30,063 | | \$3,064 | \$1,044,659 |
| | TOTAL OF DISTRICT 3 | | | | | | | \$ 1,044,659 | | \$ 3,063 | \$ 1,047,723 |
| 39 | BEL AIR RANCH ESTATES (376-439) | 4 | 5 | 4787.12 | 630 | 0.132 | SEAL COAT | \$112,640 | | \$773,894 | \$112,640 |
| 40 | PANTANO RANCH ESTATES (1-35) | 4 | 5 | 2590.62 | 340 | 0.131 | SEAL COAT | \$38,859 | | \$735,034 | \$151,500 |
| 41 | FAST HORSE RANCH (1-114) | 4 | 5 | 8907.76 | 1160 | 0.130 | SEAL COAT | \$133,616 | | \$601,418 | \$285,116 |
| 42 | VAIL RANCH (1-61) | 4 | 5 | 4719.63 | 610 | 0.129 | SEAL COAT | \$70,794 | | \$530,623 | \$355,911 |
| 43 | CASERIO VIEJO (1-12) | 4 | 5 | 943.53 | 120 | 0.127 | SEAL COAT | \$23,135 | | \$507,489 | \$379,045 |
| 44 | PARCEL E AT SANTA RITA SPRINGS (1-35) | 4 | 5 | 2678.74 | 300 | 0.112 | SEAL COAT | \$40,181 | | \$467,308 | \$419,226 |
| 45 | ANTLER CREST ESTATES (1-145) | 4 | 5 | 13085.96 | 1460 | 0.112 | SEAL COAT | \$196,289 | | \$271,018 | \$615,516 |
| 46 | COUNTRY CLUB ESTATES NO. 3 (1-25) | 4 | 5 | 2412.42 | 250 | 0.104 | SEAL COAT | \$36,186 | | \$234,832 | \$651,702 |
| 47 | OLD SPANISH TRAIL ESTATES | 4 | 5 | 9099.39 | 940 | 0.103 | SEAL COAT | \$136,491 | | \$98,341 | \$788,193 |
| 48 | SANTA RITA SPRINGS BLOCKS 1-6 | 4 | 5 | 300.01 | 30 | 0.100 | SEAL COAT | \$4,500 | | \$93,841 | \$792,693 |
| 49 | SAN DOMINGO (1-11) | 4 | 5 | 1105.29 | 110 | 0.100 | SEAL COAT | \$16,579 | | \$77,261 | \$809,273 |
| 50 | NEW DAWN ESTATES (1-37) | 4 | 5 | 3963.86 | 370 | 0.093 | SEAL COAT | \$59,458 | | \$17,804 | \$868,730 |
| 51 | SANTA RITA SPRINGS (1-5) | 4 | 5 | 450.39 | 40 | 0.089 | SEAL COAT | \$6,756 | | \$11,048 | \$875,486 |
| 52 | RANCHO DEL LAGO BLOCKS 43-49 | 4 | 5 | 457.81 | 20 | 0.044 | SEAL COAT | \$6,867 | | \$4,181 | \$882,353 |
| | TOTAL OF DISTRICT 4 | | | | | | | \$ 882,353 | \$2,644 | \$ 1,537 | \$ 886,534 |
| 53 | LAS PALOMAS | 5 | 5 | 11392.05 | 2490 | 0.219 | SEAL COAT | \$170,881 | | \$ 328,802 | \$ 170,881 |
| 54 | MOUNTAIN GARDENS ESTATES (12-64) | 5 | 5 | 2496.70 | 510 | 0.204 | SEAL COAT | \$37,451 | | \$ 291,352 | \$ 208,331 |
| 55 | MISSION WEST (1-370) | 5 | 5 | 18915.94 | 3700 | 0.196 | SEAL COAT | \$283,688 | | \$ 7,664 | \$ 492,019 |
| | TOTAL OF DISTRICT 5 | | | | | | | \$ 492,019 | | \$ 7,664 | \$ 499,683 |
| | TOTAL FOR ALL DISTRICTS | | | | | | | \$ 4,086,001 | | \$ 21,651 | \$ 4,110,296 |

| STAFF REVISION YEAR 1 ACCELERATED FUNDING: | | ACLRD \$ | \$4,334,941 | - TO BASE | \$224,645 | = | \$4,110,296 | | | | |
|--|--|--------------|-------------|-------------|-----------|-------------|-------------|---------------------|--------------|-----------------|---------------------|
| LINE # | SUBDIVISION | BOS DISTRICT | MODAL PASER | CALC LENGTH | CALC ADT | ADT/ LENGTH | TREATMEN T | DERIVED COST | BASE BALANCE | ACLRD BALANCE | RUNNING TOTAL |
| 1 | FLECHA CAIDA RANCH ESTATES NO. 2 | 1 | 5 | 3309.09 | 720 | 0.218 | SEAL COAT | \$77,695 | | \$1,260,166 | \$77,695 |
| 2 | SABINO CREST ESTATES (1-13) | 1 | 5 | 610.65 | 130 | 0.213 | SEAL COAT | \$9,160 | | \$1,251,006 | \$86,855 |
| 3 | BLACK HORSE (1-411) | 1 | 5 | 19938.43 | 4180 | 0.210 | SEAL COAT | \$274,844 | | \$976,163 | \$361,698 |
| 4 | SHADOW VIEW ESTATES (1-85) | 1 | 5 | 4350.05 | 880 | 0.202 | SEAL COAT | \$65,251 | | \$910,912 | \$426,949 |
| 5 | SABINO CREEK (1-98) | 1 | 5 | 5190.75 | 980 | 0.189 | SEAL COAT | \$77,861 | | \$833,051 | \$504,810 |
| 6 | CATALINA FOOTHILLS ESTATES NO. 8 (1-131) | 1 | 5 | 7308.50 | 1330 | 0.182 | SEAL COAT | \$111,666 | | \$721,384 | \$616,477 |
| 7 | MONTEBELLA (1-42) | 1 | 5 | 2413.93 | 430 | 0.178 | SEAL COAT | \$36,209 | | \$685,175 | \$652,686 |
| 8 | ALTA VISTA VILLAGE II (1-28) | 1 | 5 | 1635.51 | 290 | 0.177 | SEAL COAT | \$24,533 | | \$660,643 | \$677,218 |
| 9 | SABINO VISTA NO. 3 (1-28) | 1 | 5 | 1582.80 | 280 | 0.177 | SEAL COAT | \$23,742 | | \$636,901 | \$700,960 |
| 10 | TIERRA BRAVA ESTATES(1-27) | 1 | 5 | 1589.41 | 280 | 0.176 | SEAL COAT | \$23,841 | | \$613,059 | \$724,802 |
| 11 | SABINO VISTA NO. 5 (1-30) | 1 | 5 | 1730.51 | 300 | 0.173 | SEAL COAT | \$25,958 | | \$587,102 | \$750,759 |
| 12 | STONE CREEK(1-41) | 1 | 5 | 2569.33 | 440 | 0.171 | SEAL COAT | \$38,540 | | \$548,562 | \$789,299 |
| 13 | QUAIL CANYON (100-234) | 1 | 5 | 8251.30 | 1370 | 0.166 | SEAL COAT | \$232,311 | | \$316,250 | \$1,021,611 |
| 14 | ALTA VISTA ESTATES (1-124) | 1 | 5 | 7208.31 | 1100 | 0.153 | SEAL COAT | \$101,086 | | \$215,164 | \$1,122,697 |
| 15 | CASAS ADOBES POMELO ESTATES (1-29) | 1 | 5 | 2002.66 | 300 | 0.150 | SEAL COAT | \$30,040 | | \$185,124 | \$1,152,737 |
| 16 | MOUNTAIN VISTA ESTATES (1-38) | 1 | 5 | 2584.16 | 380 | 0.147 | SEAL COAT | \$65,821 | | \$119,304 | \$1,218,557 |
| 17 | THE BLUFFS II(249-319) | 1 | 5 | 5058.82 | 740 | 0.146 | SEAL COAT | \$75,882 | | \$43,421 | \$1,294,440 |
| 18 | ALTA VISTA VILLAGE I (1-16) | 1 | 5 | 1103.61 | 160 | 0.145 | SEAL COAT | \$16,554 | | \$26,867 | \$1,310,994 |
| 19 | LAS VISTAS ENCANTADAS (1-19) | 1 | 5 | 1619.85 | 190 | 0.117 | SEAL COAT | \$24,298 | | \$2,569 | \$1,335,292 |
| | TOTAL OF DISTRICT 1 | | | | | | | \$ 1,335,292 | | \$ 2,570 | \$ 1,337,861 |
| 20 | ESTRELLA(143-149&180) | 2 | 5 | 115.46 | 70 | 0.606 | SEAL COAT | \$ 1,732 | | \$336,763 | \$ 1,732 |
| 21 | ANNAJO ESTATES (1-10) | 2 | 5 | 452.69 | 100 | 0.221 | SEAL COAT | \$6,790 | | \$329,973 | \$8,522 |
| 22 | SKY LINE RANCHOS | 2 | 5 | 4430.05 | 970 | 0.219 | SEAL COAT | \$66,451 | | \$263,522 | \$74,973 |
| 23 | HIGHLAND MANOR ADDITION (1-12) | 2 | 5 | 552.08 | 120 | 0.217 | SEAL COAT | \$8,281 | | \$255,241 | \$83,254 |
| 24 | TRILBY TERRACE (1-10) | 2 | 5 | 446.09 | 90 | 0.202 | SEAL COAT | \$6,691 | | \$248,549 | \$89,946 |
| 25 | LOS RANCHITOS NUMBER 8 | 2 | 5 | 16897.58 | 3020 | 0.179 | SEAL COAT | \$225,696 | | \$22,853 | \$315,642 |
| 26 | BUTTERFIELD BUSINESS CENTER (36- 50) | 2 | 5 | 1069.07 | 150 | 0.140 | SEAL COAT | \$16,036 | | \$6,817 | \$331,678 |
| | TOTAL OF DISTRICT 2 | | | | | | | \$ 331,678 | | \$ 6,817 | \$ 338,495 |

| STAFF REVISION YEAR 1 ACCELERATED FUNDING: | | | | | | | | | | | |
|--|---------------------------------------|--------------|-------------|-------------|----------|-------------|------------|---------------------|----------------|------------------|---------------------|
| LINE # | SUBDIVISION | BOS DISTRICT | MODAL PASER | CALC LENGTH | CALC ADT | ADT/ LENGTH | TREATMEN T | DERIVED COST | BASE BALANCE | ACLRD BALANCE | RUNNING TOTAL |
| 27 | CAMINO VERDE ESTATES (1-14) | 3 | 5 | 778.43 | 140 | 0.180 | SEAL COAT | \$11,676 | | \$1,036,047 | \$11,676 |
| 28 | TUCSON MOUNTAIN RANCH (1-50) | 3 | 5 | 2966.55 | 510 | 0.172 | SEAL COAT | \$44,498 | | \$991,548 | \$56,175 |
| 29 | HUNTER SUBDIVISION NO. 4 (1-64) | 3 | 5 | 3857.93 | 660 | 0.171 | SEAL COAT | \$57,869 | | \$933,679 | \$114,044 |
| 30 | LA PUERTA DEL NORTE | 3 | 5 | 5672.65 | 940 | 0.166 | SEAL COAT | \$85,090 | | \$848,590 | \$199,133 |
| 31 | TUCSONITA | 3 | 5 | 4541.66 | 750 | 0.165 | SEAL COAT | \$131,438 | | \$717,152 | \$330,571 |
| 32 | BLANCO ESTATES (72-162) | 3 | 5 | 5518.13 | 910 | 0.165 | SEAL COAT | \$82,772 | | \$634,380 | \$413,343 |
| 33 | TUCSON AVRA WEST II (1-8) | 3 | 5 | 497.96 | 80 | 0.161 | SEAL COAT | \$7,469 | | \$626,911 | \$420,812 |
| 34 | GIBSON TRACT | 3 | 5 | 2863.56 | 440 | 0.154 | SEAL COAT | \$22,339 | | \$604,572 | \$443,151 |
| 35 | BLANCO ESTATES (163-335) | 3 | 5 | 12840.86 | 1740 | 0.136 | SEAL COAT | \$310,167 | | \$294,405 | \$753,318 |
| 36 | STAR VALLEY (153-232) | 3 | 5 | 6287.91 | 810 | 0.129 | SEAL COAT | \$94,319 | | \$200,087 | \$847,636 |
| 37 | PICTURE ROCKS WEST (1-65) | 3 | 5 | 5675.43 | 650 | 0.115 | SEAL COAT | \$85,131 | | \$114,955 | \$932,768 |
| 38 | DEL CERRO ESTATES NO. 4 (1-60) | 3 | 5 | 5455.26 | 600 | 0.110 | SEAL COAT | \$81,829 | | \$33,126 | \$1,014,597 |
| 39 | SHAMROCK CENTER (1-23) BLK. 1 | 3 | 5 | 2004.17 | 220 | 0.110 | SEAL COAT | \$30,063 | | \$3,064 | \$1,044,659 |
| | TOTAL OF DISTRICT 3 | | | | | | | \$ 1,044,659 | | \$ 3,063 | \$ 1,047,723 |
| 40 | BEL AIR RANCH ESTATES (376-439) | 4 | 5 | 4787.12 | 630 | 0.132 | SEAL COAT | \$112,640 | | \$773,894 | \$112,640 |
| 41 | PANTANO RANCH ESTATES (1-35) | 4 | 5 | 2590.62 | 340 | 0.131 | SEAL COAT | \$38,859 | | \$735,034 | \$151,500 |
| 42 | FAST HORSE RANCH (1-114) | 4 | 5 | 8907.76 | 1160 | 0.130 | SEAL COAT | \$133,616 | | \$601,418 | \$285,116 |
| 43 | VAIL RANCH (1-61) | 4 | 5 | 4719.63 | 610 | 0.129 | SEAL COAT | \$70,794 | | \$530,623 | \$355,911 |
| 44 | CASERIO VIEJO (1-12) | 4 | 5 | 943.53 | 120 | 0.127 | SEAL COAT | \$23,135 | | \$507,489 | \$379,045 |
| 45 | PARCEL E AT SANTA RITA SPRINGS (1-35) | 4 | 5 | 2678.74 | 300 | 0.112 | SEAL COAT | \$40,181 | | \$467,308 | \$419,226 |
| 46 | ANTLER CREST ESTATES (1-145) | 4 | 5 | 13085.96 | 1460 | 0.112 | SEAL COAT | \$196,289 | | \$271,018 | \$615,516 |
| 47 | COUNTRY CLUB ESTATES NO. 3 (1-25) | 4 | 5 | 2412.42 | 250 | 0.104 | SEAL COAT | \$36,186 | | \$234,832 | \$651,702 |
| 48 | OLD SPANISH TRAIL ESTATES | 4 | 5 | 9099.39 | 940 | 0.103 | SEAL COAT | \$136,491 | | \$98,341 | \$788,193 |
| 49 | SANTA RITA SPRINGS BLOCKS 1-6 | 4 | 5 | 300.01 | 30 | 0.100 | SEAL COAT | \$4,500 | | \$93,841 | \$792,693 |
| 50 | SAN DOMINGO (1-11) | 4 | 5 | 1105.29 | 110 | 0.100 | SEAL COAT | \$16,579 | | \$77,261 | \$809,273 |
| 51 | NEW DAWN ESTATES (1-37) | 4 | 5 | 3963.86 | 370 | 0.093 | SEAL COAT | \$59,458 | | \$17,804 | \$868,730 |
| 52 | SANTA RITA SPRINGS (1-5) | 4 | 5 | 450.39 | 40 | 0.089 | SEAL COAT | \$6,756 | | \$11,048 | \$875,486 |
| 53 | RANCHO DEL LAGO BLOCKS 43-49 | 4 | 5 | 457.81 | 20 | 0.044 | SEAL COAT | \$6,867 | | \$4,181 | \$882,353 |
| | TOTAL OF DISTRICT 4 | | | | | | | \$ 882,353 | \$2,644 | \$ 1,537 | \$ 886,534 |
| 54 | LAS PALOMAS | 5 | 5 | 11392.05 | 2490 | 0.219 | SEAL COAT | \$170,881 | | \$ 328,802 | \$ 170,881 |
| 55 | MOUNTAIN GARDENS ESTATES (12-64) | 5 | 5 | 2496.70 | 510 | 0.204 | SEAL COAT | \$37,451 | | \$ 291,352 | \$ 208,331 |
| 56 | MISSION WEST (1-370) | 5 | 5 | 18915.94 | 3700 | 0.196 | SEAL COAT | \$283,688 | | \$ 7,664 | \$ 492,019 |
| | TOTAL OF DISTRICT 5 | | | | | | | \$ 492,019 | | \$ 7,664 | \$ 499,683 |
| | TOTAL FOR ALL DISTRICTS | | | | | | | \$ 4,086,001 | | \$ 21,651 | \$ 4,110,296 |

| YEAR 2 BASE - ADT/Length | | | | | | | | |
|--------------------------|-----------|--------------|--------------|--------------------|---------------|------------------|--------------------|---------------|
| DISTRICT | # SUBD | # PARCELS | # Miles | BASE \$ | % of Total | ACLRD \$ | Total \$ | % of Total |
| BOS01 | 13 | 988 | 14.38 | \$1,290,121 | 35.8% | \$67,630 | \$1,357,751 | 33.7% |
| BOS02 | 5 | 127 | 2.51 | \$201,806 | 5.6% | \$12,007 | \$213,813 | 5.3% |
| BOS03 | 7 | 639 | 11.66 | \$911,734 | 25.3% | \$277,569 | \$1,189,303 | 29.5% |
| BOS04 | 10 | 512 | 11.56 | \$886,508 | 24.6% | \$28,783 | \$915,291 | 22.7% |
| BOS05 | 4 | 472 | 5.28 | \$313,522 | 8.7% | \$36,704 | \$350,226 | 8.7% |
| TOTAL | 39 | 2,738 | 45.39 | \$3,603,691 | 100.0% | \$422,693 | \$4,026,384 | 100.0% |

| STAFF REVISION YEAR 2 BASE - ADT/Length | | | | | | | | | | |
|---|-----------|--------------|--------------|--------------------|---------------|------------------|------------------|----------------|--------------------|---------------|
| DISTRICT | # SUBD | # PARCELS | # Miles | BASE \$ | % of Total | ORIG ACLRD \$ | REV ACLRD \$ | ADDITIONAL | Total \$ | % of Total |
| BOS01 | 13 | 988 | 14.38 | \$1,290,121 | 35.8% | \$67,630 | \$67,630 | \$0 | \$1,357,751 | 33.7% |
| BOS02 | 5 | 127 | 2.51 | \$201,806 | 5.6% | \$12,007 | \$12,007 | \$0 | \$213,813 | 5.3% |
| BOS03 | 7 | 639 | 11.66 | \$911,734 | 25.3% | \$277,569 | \$277,569 | \$0 | \$1,189,303 | 29.5% |
| BOS04 | 10 | 707 | 11.02 | \$886,508 | 24.6% | \$28,783 | \$30,143 | \$1,360 | \$916,651 | 22.8% |
| BOS05 | 4 | 472 | 5.28 | \$313,522 | 8.7% | \$36,704 | \$36,704 | \$0 | \$350,226 | 8.7% |
| TOTAL | 39 | 2,933 | 44.86 | \$3,603,691 | 100.0% | \$422,693 | \$424,053 | \$1,360 | \$4,027,744 | 100.0% |

| STAFF REVISION YEAR 2 BASE FUNDING: | | | | | | | | | | | |
|-------------------------------------|--|--------------|-------------|-------------|-----------|-------------|---------------|--------------|--------------|---------------|---------------|
| LINE # | SUBDIVISION | BOS DISTRICT | MODAL PASER | CALC LENGTH | CALC ADT | ADT/ LENGTH | TREATMENT | DERIVED COST | BASE BALANCE | ACLRD BALANCE | RUNNING TOTAL |
| | | | \$3,603,691 | +ACLRD \$ | \$422,693 | = | | \$4,026,384 | | | |
| 1 | ORACLE FOOTHILLS ESTATES NO. 7 (301-383) | 1 | 5 | 8923.32 | 1290 | 0.145 | SEAL COAT | \$133,850 | \$1,290,121 | | \$133,850 |
| 2 | SABINO VISTA NO. 4 (1-31) | 1 | 5 | 2081.09 | 300 | 0.144 | SEAL COAT | \$31,216 | \$1,156,271 | | \$165,066 |
| 3 | CATALINA FOOTHILLS ESTATES NO. 2 | 1 | 5 | 13523.98 | 1920 | 0.142 | SEAL COAT | \$370,724 | \$1,125,055 | | \$535,791 |
| 4 | VENTANA OVERLOOK (1-36) | 1 | 5 | 2661.31 | 370 | 0.139 | SEAL COAT | \$39,920 | \$754,330 | | \$575,710 |
| 5 | CATALINA FOOTHILLS ESTATES NO.7 (121-186) | 1 | 5 | 4877.14 | 660 | 0.135 | SEAL COAT | \$73,157 | \$714,411 | | \$648,867 |
| 6 | ALTA VISTA (1-98) | 1 | 5 | 8231.06 | 1050 | 0.128 | SEAL COAT | \$119,053 | \$641,254 | | \$767,920 |
| 7 | RIVER HILLS ESTATES (1-47) | 1 | 5 | 3691.89 | 470 | 0.127 | SEAL COAT | \$113,139 | \$522,201 | | \$881,060 |
| 8 | SHADOW RIDGE NORTH NO.2 (7-46) | 1 | 5 | 2154.67 | 270 | 0.125 | SEAL COAT | \$32,320 | \$409,061 | | \$913,380 |
| 9 | ORACLE FOOTHILLS ESTATES NO. 8 (1-30) | 1 | 5 | 2495.74 | 310 | 0.124 | SEAL COAT | \$37,436 | \$376,741 | | \$950,816 |
| 10 | CATALINA FOOTHILLS ESTATES NO. 7 (187-249) | 1 | 5 | 5435.17 | 650 | 0.120 | SEAL COAT | \$81,528 | \$339,305 | | \$1,032,343 |
| 11 | CATALINA FOOTHILLS ESTATES NO. 7 (44-120) | 1 | 5 | 6369.35 | 760 | 0.119 | SEAL COAT | \$93,114 | \$257,778 | | \$1,125,458 |
| 12 | SHADOW HILLS (484-595) | 1 | 5 | 9619.70 | 1140 | 0.119 | SEAL COAT | \$144,296 | \$164,663 | | \$1,269,753 |
| 13 | CATALINA FOOTHILLS ESTATES NO. 7 (250-314) | 1 | 5 | 5866.51 | 690 | 0.118 | SEAL COAT | \$87,998 | \$20,368 | \$67,630 | \$1,357,751 |
| | TOTAL OF DISTRICT 1 | | | | | | | \$ 1,357,751 | \$1,290,121 | \$ 67,630 | |
| 14 | FRAZIER ROAD ESTATES (1-39) | 2 | 5 | 3252.58 | 390 | 0.120 | SEAL COAT | \$48,789 | \$201,806 | | \$48,789 |
| 15 | CASITAS DEL VALLE II (1-34) | 2 | 5 | 2990.21 | 350 | 0.117 | SEAL COAT | \$44,853 | \$153,017 | | \$93,642 |
| 16 | SAN PEDRO ESTATES (1-23) | 2 | 5 | 2266.40 | 230 | 0.101 | SEAL COAT | \$33,996 | \$108,164 | | \$127,638 |
| 17 | BANDES ADDITION | 2 | 5 | 2424.62 | 160 | 0.066 | SEAL COAT | \$36,369 | \$74,168 | | \$164,007 |
| 18 | TUCSON BROADBENT BUSINESS PARK (1-5) | 2 | 5 | 2343.36 | 140 | 0.060 | SEAL COAT | \$49,806 | \$37,799 | \$12,007 | \$213,813 |
| | TOTAL OF DISTRICT 2 | | | | | | | \$ 213,813 | \$201,806 | \$ 12,007 | |
| 19 | HUNTER SUBDIVISION NO. 3 (1-112) | 3 | 5 | 9763.82 | 1120 | 0.115 | SEAL COAT | \$220,601 | \$911,734 | | \$220,601 |
| 20 | CRITTERLAND II (1-148) | 3 | 5 | 13331.43 | 1460 | 0.110 | SEAL COAT | \$199,971 | \$691,133 | | \$420,573 |
| 21 | NORTH STAR RANCH REPLAT (1-37) | 3 | 5 | 3295.24 | 360 | 0.109 | SEAL COAT | \$49,429 | \$491,161 | | \$470,001 |
| 22 | WONDERLAND (36-123) | 3 | 5 | 8247.03 | 880 | 0.107 | SEAL COAT | \$123,705 | \$441,733 | | \$593,707 |
| 23 | TUCSON AVRA WEST III BLK A (1-71) | 3 | 5 | 7064.52 | 720 | 0.102 | SEAL COAT | \$105,968 | \$318,027 | | \$699,675 |
| 24 | WONDERLAND (1-25) | 3 | 5 | 2547.54 | 250 | 0.098 | SEAL COAT | \$38,213 | \$212,059 | | \$737,888 |
| 25 | TUCSON AVRA WEST (1-168) | 3 | 5 | 17310.58 | 1600 | 0.092 | SEAL COAT | \$451,415 | \$173,846 | \$277,569 | \$1,189,303 |
| | TOTAL OF DISTRICT 3 | | | | | | | \$ 1,189,303 | \$911,734 | \$ 277,569 | |
| 26 | WHETSTONE RANCH (1-63) | 4 | 5 | 6572.86 | 630 | 0.096 | SEAL COAT | \$98,593 | \$886,508 | | \$98,593 |
| 27 | ROCKING K RANCH ESTATES IV (1-118) | 4 | 5 | 12562.33 | 1190 | 0.095 | SEAL COAT | \$188,435 | \$787,915 | | \$287,028 |
| 28 | THUNDERHEAD RANCH (1-56) | 4 | 5 | 6335.74 | 600 | 0.095 | SEAL COAT | \$95,036 | \$599,480 | | \$382,064 |
| 29 | SNELLER HILLS (1-39) | 4 | 5 | 4184.20 | 390 | 0.093 | SEAL COAT | \$62,763 | | | \$444,827 |
| 36 | GREEN VALLEY DESERT HILLS NO.3(1-753) | 4 | 4 | 1374.07 | 2340 | 1.703 | REPAIR/REPLAC | \$64,123 | \$504,444 | \$1,360 | |
| 30 | DESCANSO ESTATES (1-43) | 4 | 5 | 4666.78 | 430 | 0.092 | SEAL COAT | \$70,002 | \$440,321 | | \$514,829 |
| 31 | OLD VAIL VILLAGE (1-37) | 4 | 5 | 4886.27 | 410 | 0.084 | SEAL COAT | \$ 73,294 | \$370,319 | | \$588,123 |
| 32 | HOHOKAM ESTATES (1-21) | 4 | 5 | 2661.80 | 210 | 0.079 | SEAL COAT | \$39,927 | \$297,025 | | \$628,050 |
| 33 | ROCKING K RANCH ESTATES III (1-20, 23-90) | 4 | 5 | 12451.21 | 880 | 0.071 | SEAL COAT | \$186,768 | \$257,098 | | \$814,818 |
| 34 | THE ELIN RANCH (1-18) | 4 | 5 | 2345.38 | 160 | 0.068 | SEAL COAT | \$35,181 | \$70,330 | | \$849,998 |
| 35 | RANCHOS PEQUENOS (1-20) | 4 | 5 | 4352.83 | 220 | 0.051 | SEAL COAT | \$65,292 | \$35,149 | \$30,143 | \$915,291 |
| | TOTAL OF DISTRICT 4 | | | | | | | \$ 916,651 | \$886,508 | \$ 30,143 | |
| 36 | MISSION RIDGE (1-305) | 5 | 5 | 16783.99 | 3080 | 0.184 | SEAL COAT | \$ 212,742 | \$ 313,522 | | \$ 212,742 |
| 37 | LAS PALOMAS (1-284) | 5 | 5 | 4958.98 | 740 | 0.149 | SEAL COAT | \$45,252 | \$100,780 | | \$257,994 |
| 38 | MISSION TERRACE NO.2 | 5 | 5 | 2866.82 | 420 | 0.147 | SEAL COAT | \$43,002 | \$55,528 | | \$300,996 |
| 39 | SAN XAVIER ESTATES (77-122) | 5 | 5 | 3281.98 | 480 | 0.146 | SEAL COAT | \$49,230 | \$12,526 | \$36,704 | \$350,226 |
| | TOTAL OF DISTRICT 5 | | | | | | | \$ 350,226 | \$313,522 | \$ 36,704 | |
| | TOTAL FOR ALL DISTRICTS | | | | | | | \$ 4,027,744 | \$ 3,603,691 | \$ 424,053 | |

| YEAR 2 ACCELERATED - ADT/FT | | | | | | | | |
|-----------------------------|-----------|--------------|--------------|--------------------|---------------|--------------------|---------------|-----------------|
| DISTRICT | # SUBD | # PARCELS | # Miles | ACLRD \$ | % of ACLRD | Total \$ Used | % of Total | Difference |
| BOS01 | 12 | 948 | 15.13 | \$1,273,398 | 32.5% | \$1,265,923 | 33.1% | \$7,476 |
| BOS02 | 7 | 176 | 1.21 | \$322,185 | 8.2% | \$298,051 | 7.8% | \$24,134 |
| BOS03 | 13 | 1,323 | 6.44 | \$997,240 | 25.5% | \$976,672 | 25.5% | \$20,568 |
| BOS04 | 12 | 1,346 | 5.41 | \$843,818 | 21.6% | \$820,822 | 21.4% | \$22,996 |
| BOS05 | 9 | 342 | 5.88 | \$475,607 | 12.2% | \$468,577 | 12.2% | \$7,030 |
| TOTAL | 53 | 4,135 | 34.07 | \$3,912,248 | 100.0% | \$3,830,045 | 100.0% | \$82,203 |

| STAFF REVISION YEAR 2 ACCELERATED - ADT/FT | | | | | | | | | |
|--|-----------|--------------|--------------|--------------------|---------------|--------------------|--------------------|---------------|-----------------|
| DISTRICT | # SUBD | # PARCELS | # Miles | ACLRD \$ | % of ACLRD | ADDITIONAL TO BASE | Total \$ Used | % of Total | Difference |
| BOS01 | 12 | 948 | 15.13 | \$1,273,398 | 32.5% | \$0 | \$1,265,923 | 32.9% | \$7,476 |
| BOS02 | 7 | 176 | 1.21 | \$322,185 | 8.2% | \$0 | \$298,051 | 7.8% | \$24,134 |
| BOS03 | 13 | 1,323 | 6.44 | \$997,240 | 25.5% | \$0 | \$976,672 | 25.4% | \$20,568 |
| BOS04 | 12 | 1,155 | 5.46 | \$843,818 | 21.6% | \$1,360 | \$835,101 | 21.7% | \$7,357 |
| BOS05 | 9 | 342 | 5.88 | \$475,607 | 12.2% | \$0 | \$468,577 | 12.2% | \$7,030 |
| TOTAL | 53 | 3,944 | 34.13 | \$3,912,248 | 100.0% | \$1,360 | \$3,844,323 | 100.0% | \$66,565 |

| STAFF REVISION YEAR 2 ACCELERATED FUNDING: | | | | | | | | | | | ACLRD \$ | \$4,334,941 | - TO BASE | \$224,645 | = | \$4,110,296 | | | | |
|--|--|--------------|-------------|-------------|----------|-------------|----------------|--------------------|--------------|-----------------|--------------------|-------------|-----------|-----------|---|-------------|--|--|--|--|
| LINE # | SUBDIVISION | BOS DISTRICT | MODAL PASER | CALC LENGTH | CALC ADT | ADT/ LENGTH | TREATMENT | DERIVED COST | BASE BALANCE | ACLRD BALANCE | RUNNING TOTAL | | | | | | | | | |
| 1 | ORACLE FOOTHILLS ESTATES NO. 2 | 1 | 5 | 11582.33 | 1360 | 0.117 | SEAL COAT | \$173,735 | | \$1,099,663 | \$173,735 | | | | | | | | | |
| 2 | HACIENDA DEL JOVEN ESTATES (1-40) | 1 | 5 | 3518.43 | 410 | 0.117 | SEAL COAT | \$52,776 | | \$1,046,887 | \$226,511 | | | | | | | | | |
| 3 | SKYLINE FOOTHILLS ESTATES | 1 | 5 | 6452.70 | 750 | 0.116 | SEAL COAT | \$93,326 | | \$953,561 | \$319,837 | | | | | | | | | |
| 4 | SHADOW HILLS (1-483) | 1 | 5 | 47540.66 | 4880 | 0.103 | SEAL COAT | \$713,110 | | \$240,451 | \$1,032,947 | | | | | | | | | |
| 5 | COLONIA DE KINO (1-29) | 1 | 5 | 2997.93 | 300 | 0.100 | SEAL COAT | \$44,969 | | \$195,482 | \$1,077,916 | | | | | | | | | |
| 6 | CATALINA FOOTHILLS ESTATES NO. 7 (1-43) | 1 | 5 | 4306.27 | 420 | 0.098 | SEAL COAT | \$64,594 | | \$130,888 | \$1,142,510 | | | | | | | | | |
| 7 | CATALINA VILLAGE NO.2 | 1 | 5 | 1263.49 | 110 | 0.087 | SEAL COAT | \$18,952 | | \$111,936 | \$1,161,462 | | | | | | | | | |
| 8 | JUNIPER RIDGE(1-12) | 1 | 4 | 184.54 | 130 | 0.704 | REPAIR/REPLACE | \$8,612 | | \$103,324 | \$1,170,074 | | | | | | | | | |
| 9 | CASAS DEL OESTE(209-232) | 1 | 4 | 431.86 | 240 | 0.556 | REPAIR/REPLACE | \$20,154 | | \$83,171 | \$1,190,228 | | | | | | | | | |
| 10 | JUPITER FOOTHILLS ESTATES(1-59) | 1 | 3 | 1081.03 | 600 | 0.555 | REPAIR/REPLACE | \$50,448 | | \$32,723 | \$1,240,676 | | | | | | | | | |
| 11 | BONITA ACRES(1-17) | 1 | 4 | 334.67 | 180 | 0.538 | REPAIR/REPLACE | \$15,618 | | \$17,105 | \$1,256,294 | | | | | | | | | |
| 12 | RIVERSIDE TERRACE RESUB. (1-10) | 1 | 4 | 206.34 | 100 | 0.485 | REPAIR/REPLACE | \$9,629 | | \$7,476 | \$1,265,923 | | | | | | | | | |
| | TOTAL OF DISTRICT 1 | | | | | | | \$1,265,923 | | \$7,476 | \$1,273,398 | | | | | | | | | |
| 13 | McCRAY ADDITION (1-25) | 2 | 4 | 605.66 | 250 | 0.413 | REPAIR/REPLACE | \$28,264 | | \$293,921 | \$28,264 | | | | | | | | | |
| 14 | MICHIANA ADDITION | 2 | 4 | 1028.95 | 420 | 0.408 | REPAIR/REPLACE | \$48,018 | | \$245,903 | \$76,282 | | | | | | | | | |
| 15 | CONTRACTORS' INDUSTRIAL PARK (1-18) | 2 | 4 | 413.81 | 160 | 0.387 | REPAIR/REPLACE | \$19,311 | | \$226,592 | \$95,593 | | | | | | | | | |
| 16 | ST. KATHERINE COURT | 2 | 2 | 499.00 | 140 | 0.281 | REPAIR/REPLACE | \$23,287 | | \$203,306 | \$118,879 | | | | | | | | | |
| 17 | SALLY'S ALLEY | 2 | 2 | 517.83 | 140 | 0.270 | REPAIR/REPLACE | \$24,165 | | \$179,140 | \$143,045 | | | | | | | | | |
| 18 | FORESITE INDUSTRIAL SITES | 2 | 2 | 1778.80 | 430 | 0.242 | REPAIR/REPLACE | \$83,011 | | \$96,129 | \$226,056 | | | | | | | | | |
| 19 | L-S ACRES | 2 | 3 | 1542.76 | 220 | 0.143 | REPAIR/REPLACE | \$71,995 | | \$24,134 | \$298,051 | | | | | | | | | |
| | TOTAL OF DISTRICT 2 | | | | | | | \$298,051 | | \$24,134 | \$322,185 | | | | | | | | | |
| 20 | AVRA RANCHETTES (132-169) | 3 | 5 | 4383.36 | 390 | 0.089 | SEAL COAT | \$76,750 | | \$920,490 | \$76,750 | | | | | | | | | |
| 21 | DESERT VIEW ESTATES (1-14) | 3 | 5 | 1714.30 | 140 | 0.082 | SEAL COAT | \$25,714 | | \$894,776 | \$102,464 | | | | | | | | | |
| 22 | MILLIGAN'S ACRES (1-19) | 3 | 5 | 3199.05 | 200 | 0.063 | SEAL COAT | \$47,986 | | \$846,790 | \$150,450 | | | | | | | | | |
| 23 | OLD WEST RANCHETTES (42-104) | 3 | 5 | 9634.32 | 600 | 0.062 | SEAL COAT | \$139,286 | | \$707,504 | \$289,736 | | | | | | | | | |
| 24 | DIABLO VILLAGE ESTATES (1-511) | 3 | 4 | 2548.86 | 5130 | 2.013 | REPAIR/REPLACE | \$118,947 | | \$588,557 | \$408,683 | | | | | | | | | |
| 25 | DIAMOND BELL RANCH - TUCSON UNIT 9 (LOTS 58-375) | 3 | 4 | 2333.57 | 2920 | 1.251 | REPAIR/REPLACE | \$92,111 | | \$496,446 | \$500,794 | | | | | | | | | |
| 26 | WEGNER ADDITION (1-25) | 3 | 3 | 346.32 | 250 | 0.722 | REPAIR/REPLACE | \$16,161 | | \$480,284 | \$516,955 | | | | | | | | | |
| 27 | IRAS ADDITION (1-35) | 3 | 3 | 740.29 | 340 | 0.459 | REPAIR/REPLACE | \$34,547 | | \$445,737 | \$551,502 | | | | | | | | | |
| 28 | SUNRISE ADDITION NO. 2 | 3 | 4 | 1210.55 | 490 | 0.405 | REPAIR/REPLACE | \$56,492 | | \$389,245 | \$607,994 | | | | | | | | | |
| 29 | SUNRISE ADD. NO. 3 | 3 | 4 | 1354.11 | 510 | 0.377 | REPAIR/REPLACE | \$63,192 | | \$326,054 | \$671,186 | | | | | | | | | |
| 30 | KESSLER MANOR (1-90) | 3 | 4 | 2494.35 | 890 | 0.357 | REPAIR/REPLACE | \$116,403 | | \$209,651 | \$787,589 | | | | | | | | | |
| 31 | OLD WEST RANCHETTES (1-41) | 3 | 4 | 1208.82 | 410 | 0.339 | REPAIR/REPLACE | \$56,412 | | \$153,239 | \$844,001 | | | | | | | | | |
| 32 | PALMDALE NO. 2 (1-97) | 3 | 4 | 2842.95 | 960 | 0.338 | REPAIR/REPLACE | \$132,671 | | \$20,568 | \$976,672 | | | | | | | | | |
| | TOTAL OF DISTRICT 3 | | | | | | | \$976,672 | | \$20,568 | \$997,240 | | | | | | | | | |

| STAFF REVISION YEAR 2 ACCELERATED FUNDING: | | ACLRD \$ | \$4,334,941 | - TO BASE | \$224,645 | = | \$4,110,296 | | | | |
|--|--|--------------|-------------|-------------|-----------|-------------|----------------|--------------|--------------|---------------|---------------|
| LINE # | SUBDIVISION | BOS DISTRICT | MODAL PASER | CALC LENGTH | CALC ADT | ADT/ LENGTH | TREATMENT | DERIVED COST | BASE BALANCE | ACLRD BALANCE | RUNNING TOTAL |
| 33 | RANCHITOS DE LOS SAGUAROS (1-21) | 4 | 5 | 4955.21 | 210 | 0.042 | SEAL COAT | \$74,328 | | \$769,490 | \$74,328 |
| 34 | ROCKING K RANCH ESTATES II (21-50) | 4 | 5 | 9243.13 | 310 | 0.034 | SEAL COAT | \$138,647 | | \$630,843 | \$212,975 |
| 35 | TUCSON PARK NO. 2 | 4 | 5 | 1705.12 | 50 | 0.029 | SEAL COAT | \$25,577 | | \$605,266 | \$238,552 |
| 36 | GREEN VALLEY DESERT HILLS NO.3(1-753) | 4 | 4 | 1374.07 | 2340 | 1.703 | REPAIR/REPLACE | \$64,123 | | | |
| 20 | CRESTA VERDE (1-43) | 4 | 3 | 1680.04 | 430 | 0.256 | REPAIR/REPLACE | \$78,402 | | \$526,864 | \$316,954 |
| 37 | GREEN VALLEY DESERT HILLS NO.4 (1-224) | 4 | 4 | 1582.70 | 2070 | 1.308 | REPAIR/REPLACE | \$73,860 | | \$453,005 | \$390,813 |
| 38 | GREEN VALLEY DESERT HILLS NO. 2(1-613) | 4 | 4 | 3495.38 | 4570 | 1.307 | REPAIR/REPLACE | \$155,567 | | \$297,438 | \$546,380 |
| 39 | GREEN VALLEY DESERT HILLS NO.5 (1-196) | 4 | 4 | 1925.45 | 1970 | 1.023 | REPAIR/REPLACE | \$89,854 | | \$207,584 | \$636,235 |
| 40 | NEW TUCSON UNIT NO. 22 RESUB OF BLKS 2-3 | 4 | 4 | 640.10 | 350 | 0.547 | REPAIR/REPLACE | \$29,871 | | \$177,712 | \$666,106 |
| 41 | MADERA VISTA(1-85) | 4 | 4 | 1936.87 | 910 | 0.470 | REPAIR/REPLACE | \$90,387 | | \$87,325 | \$756,493 |
| 42 | GREEN VALLEY COUNTRY CLUB ESTATES RESUB | 4 | 4 | 816.01 | 380 | 0.466 | REPAIR/REPLACE | \$38,080 | | \$49,245 | \$794,573 |
| 43 | MAGI ESTATE(1-20) | 4 | 4 | 528.75 | 200 | 0.378 | REPAIR/REPLACE | \$24,675 | | \$24,570 | \$819,248 |
| 44 | JACS MEADOWS (1-10) | 4 | 3 | 339.70 | 100 | 0.294 | REPAIR/REPLACE | \$15,853 | | \$8,717 | \$835,101 |
| | TOTAL OF DISTRICT 4 | | | | | | | \$835,101 | \$1,360 | \$7,357 | \$843,818 |
| 45 | VISTA DE LA SIERRA DE DIOS (1-21) | 5 | 5 | 1632.60 | 210 | 0.129 | SEAL COAT | \$24,489 | | \$451,118 | \$24,489 |
| 46 | CAMINO VERDE ESTATES(1-79) | 5 | 5 | 6526.80 | 810 | 0.124 | SEAL COAT | \$97,902 | | \$353,216 | \$122,391 |
| 47 | PASEO MONTANA (1-25) | 5 | 5 | 2081.09 | 250 | 0.120 | SEAL COAT | \$31,216 | | \$321,999 | \$153,607 |
| 48 | SAN XAVIER ESTATES (1-31) | 5 | 5 | 2723.74 | 310 | 0.114 | SEAL COAT | \$40,856 | | \$281,143 | \$194,463 |
| 49 | VISTA DE LA SIERRA DE DIOS (22-83) | 5 | 5 | 5563.36 | 600 | 0.108 | SEAL COAT | \$83,450 | | \$197,693 | \$277,914 |
| 50 | MISSION RIDGE (306-788) | 5 | 5 | 5482.68 | 560 | 0.102 | SEAL COAT | \$76,035 | | \$121,658 | \$353,948 |
| 51 | SAN XAVIER ESTATES (32-76) | 5 | 5 | 5421.74 | 450 | 0.083 | SEAL COAT | \$81,326 | | \$40,332 | \$435,275 |
| 52 | LAZY C RANCH ESTATES NO. 1 | 5 | 5 | 1347.16 | 60 | 0.045 | SEAL COAT | \$20,207 | | \$20,125 | \$455,482 |
| 53 | PAINTED HILLS ESTATES (1-18) | 5 | 4 | 280.61 | 170 | 0.606 | REPAIR/REPLACE | \$13,095 | | \$7,030 | \$468,577 |
| | TOTAL OF DISTRICT 5 | | | | | | | \$468,577 | | \$7,030 | \$475,607 |
| | TOTAL OF ALL DISTRICTS | | | | | | | \$3,844,323 | | \$66,565 | \$3,912,248 |

| STAFF REVISION YEAR 2 ACCELERATED FUNDING: | | | | | | | | | | | ACLRD \$ | \$4,334,941 | - TO BASE | \$224,645 | = | \$4,110,296 | | | | |
|--|--|--------------|-------------|-------------|----------|-------------|----------------|--------------------|--------------|-----------------|--------------------|-------------|-----------|-----------|---|-------------|--|--|--|--|
| LINE # | SUBDIVISION | BOS DISTRICT | MODAL PASER | CALC LENGTH | CALC ADT | ADT/ LENGTH | TREATMENT | DERIVED COST | BASE BALANCE | ACLRD BALANCE | RUNNING TOTAL | | | | | | | | | |
| 1 | ORACLE FOOTHILLS ESTATES NO. 2 | 1 | 5 | 11582.33 | 1360 | 0.117 | SEAL COAT | \$173,735 | | \$1,099,663 | \$173,735 | | | | | | | | | |
| 2 | HACIENDA DEL JOVEN ESTATES (1-40) | 1 | 5 | 3518.43 | 410 | 0.117 | SEAL COAT | \$52,776 | | \$1,046,887 | \$226,511 | | | | | | | | | |
| 3 | SKYLINE FOOTHILLS ESTATES | 1 | 5 | 6452.70 | 750 | 0.116 | SEAL COAT | \$93,326 | | \$953,561 | \$319,837 | | | | | | | | | |
| 4 | SHADOW HILLS (1-483) | 1 | 5 | 47540.66 | 4880 | 0.103 | SEAL COAT | \$713,110 | | \$240,451 | \$1,032,947 | | | | | | | | | |
| 5 | COLONIA DE KINO (1-29) | 1 | 5 | 2997.93 | 300 | 0.100 | SEAL COAT | \$44,969 | | \$195,482 | \$1,077,916 | | | | | | | | | |
| 6 | CATALINA FOOTHILLS ESTATES NO. 7 (1-43) | 1 | 5 | 4306.27 | 420 | 0.098 | SEAL COAT | \$64,594 | | \$130,888 | \$1,142,510 | | | | | | | | | |
| 7 | CATALINA VILLAGE NO.2 | 1 | 5 | 1263.49 | 110 | 0.087 | SEAL COAT | \$18,952 | | \$111,936 | \$1,161,462 | | | | | | | | | |
| 8 | JUNIPER RIDGE(1-12) | 1 | 4 | 184.54 | 130 | 0.704 | REPAIR/REPLACE | \$8,612 | | \$103,324 | \$1,170,074 | | | | | | | | | |
| 9 | CASAS DEL OESTE(209-232) | 1 | 4 | 431.86 | 240 | 0.556 | REPAIR/REPLACE | \$20,154 | | \$83,171 | \$1,190,228 | | | | | | | | | |
| 10 | JUPITER FOOTHILLS ESTATES(1-59) | 1 | 3 | 1081.03 | 600 | 0.555 | REPAIR/REPLACE | \$50,448 | | \$32,723 | \$1,240,676 | | | | | | | | | |
| 11 | BONITA ACRES(1-17) | 1 | 4 | 334.67 | 180 | 0.538 | REPAIR/REPLACE | \$15,618 | | \$17,105 | \$1,256,294 | | | | | | | | | |
| 12 | RIVERSIDE TERRACE RESUB. (1-10) | 1 | 4 | 206.34 | 100 | 0.485 | REPAIR/REPLACE | \$9,629 | | \$7,476 | \$1,265,923 | | | | | | | | | |
| | TOTAL OF DISTRICT 1 | | | | | | | \$1,265,923 | | \$7,476 | \$1,273,398 | | | | | | | | | |
| 13 | McCRAY ADDITION (1-25) | 2 | 4 | 605.66 | 250 | 0.413 | REPAIR/REPLACE | \$28,264 | | \$293,921 | \$28,264 | | | | | | | | | |
| 14 | MICHIANA ADDITION | 2 | 4 | 1028.95 | 420 | 0.408 | REPAIR/REPLACE | \$48,018 | | \$245,903 | \$76,282 | | | | | | | | | |
| 15 | CONTRACTORS' INDUSTRIAL PARK (1-18) | 2 | 4 | 413.81 | 160 | 0.387 | REPAIR/REPLACE | \$19,311 | | \$226,592 | \$95,593 | | | | | | | | | |
| 16 | ST. KATHERINE COURT | 2 | 2 | 499.00 | 140 | 0.281 | REPAIR/REPLACE | \$23,287 | | \$203,306 | \$118,879 | | | | | | | | | |
| 17 | SALLY'S ALLEY | 2 | 2 | 517.83 | 140 | 0.270 | REPAIR/REPLACE | \$24,165 | | \$179,140 | \$143,045 | | | | | | | | | |
| 18 | FORESITE INDUSTRIAL SITES | 2 | 2 | 1778.80 | 430 | 0.242 | REPAIR/REPLACE | \$83,011 | | \$96,129 | \$226,056 | | | | | | | | | |
| 19 | L-S ACRES | 2 | 3 | 1542.76 | 220 | 0.143 | REPAIR/REPLACE | \$71,995 | | \$24,134 | \$298,051 | | | | | | | | | |
| | TOTAL OF DISTRICT 2 | | | | | | | \$298,051 | | \$24,134 | \$322,185 | | | | | | | | | |
| 20 | AVRA RANCHETTES (132-169) | 3 | 5 | 4383.36 | 390 | 0.089 | SEAL COAT | \$76,750 | | \$920,490 | \$76,750 | | | | | | | | | |
| 21 | DESERT VIEW ESTATES (1-14) | 3 | 5 | 1714.30 | 140 | 0.082 | SEAL COAT | \$25,714 | | \$894,776 | \$102,464 | | | | | | | | | |
| 22 | MILLIGAN'S ACRES (1-19) | 3 | 5 | 3199.05 | 200 | 0.063 | SEAL COAT | \$47,986 | | \$846,790 | \$150,450 | | | | | | | | | |
| 23 | OLD WEST RANCHETTES (42-104) | 3 | 5 | 9634.32 | 600 | 0.062 | SEAL COAT | \$139,286 | | \$707,504 | \$289,736 | | | | | | | | | |
| 24 | DIABLO VILLAGE ESTATES (1-511) | 3 | 4 | 2548.86 | 5130 | 2.013 | REPAIR/REPLACE | \$118,947 | | \$588,557 | \$408,683 | | | | | | | | | |
| 25 | DIAMOND BELL RANCH - TUCSON UNIT 9 (LOTS 58-375) | 3 | 4 | 2333.57 | 2920 | 1.251 | REPAIR/REPLACE | \$92,111 | | \$496,446 | \$500,794 | | | | | | | | | |
| 26 | WEGNER ADDITION (1-25) | 3 | 3 | 346.32 | 250 | 0.722 | REPAIR/REPLACE | \$16,161 | | \$480,284 | \$516,955 | | | | | | | | | |
| 27 | IRAS ADDITION (1-35) | 3 | 3 | 740.29 | 340 | 0.459 | REPAIR/REPLACE | \$34,547 | | \$445,737 | \$551,502 | | | | | | | | | |
| 28 | SUNRISE ADDITION NO. 2 | 3 | 4 | 1210.55 | 490 | 0.405 | REPAIR/REPLACE | \$56,492 | | \$389,245 | \$607,994 | | | | | | | | | |
| 29 | SUNRISE ADD. NO. 3 | 3 | 4 | 1354.11 | 510 | 0.377 | REPAIR/REPLACE | \$63,192 | | \$326,054 | \$671,186 | | | | | | | | | |
| 30 | KESSLER MANOR (1-90) | 3 | 4 | 2494.35 | 890 | 0.357 | REPAIR/REPLACE | \$116,403 | | \$209,651 | \$787,589 | | | | | | | | | |
| 31 | OLD WEST RANCHETTES (1-41) | 3 | 4 | 1208.82 | 410 | 0.339 | REPAIR/REPLACE | \$56,412 | | \$153,239 | \$844,001 | | | | | | | | | |
| 32 | PALMDALE NO. 2 (1-97) | 3 | 4 | 2842.95 | 960 | 0.338 | REPAIR/REPLACE | \$132,671 | | \$20,568 | \$976,672 | | | | | | | | | |
| | TOTAL OF DISTRICT 3 | | | | | | | \$976,672 | | \$20,568 | \$997,240 | | | | | | | | | |

| STAFF REVISION YEAR 2 ACCELERATED FUNDING: | | | | | | | | | | | ACLRD \$ | \$4,334,941 | - TO BASE | \$224,645 | = | \$4,110,296 | | | | |
|--|--|--------------|-------------|-------------|----------|-------------|----------------|--------------|--------------|---------------|---------------|-------------|-----------|-----------|---|-------------|--|--|--|--|
| LINE # | SUBDIVISION | BOS DISTRICT | MODAL PASER | CALC LENGTH | CALC ADT | ADT/ LENGTH | TREATMENT | DERIVED COST | BASE BALANCE | ACLRD BALANCE | RUNNING TOTAL | | | | | | | | | |
| 33 | RANCHITOS DE LOS SAGUAROS (1-21) | 4 | 5 | 4955.21 | 210 | 0.042 | SEAL COAT | \$74,328 | | \$769,490 | \$74,328 | | | | | | | | | |
| 34 | ROCKING K RANCH ESTATES II (21-50) | 4 | 5 | 9243.13 | 310 | 0.034 | SEAL COAT | \$138,647 | | \$630,843 | \$212,975 | | | | | | | | | |
| 35 | TUCSON PARK NO. 2 | 4 | 5 | 1705.12 | 50 | 0.029 | SEAL COAT | \$25,577 | | \$605,266 | \$238,552 | | | | | | | | | |
| 36 | CRESTA VERDE (1-43) | 4 | 3 | 1680.04 | 430 | 0.256 | REPAIR/REPLACE | \$78,402 | | \$526,864 | \$316,954 | | | | | | | | | |
| 37 | GREEN VALLEY DESERT HILLS NO.4 (1-224) | 4 | 4 | 1582.70 | 2070 | 1.308 | REPAIR/REPLACE | \$73,860 | | \$453,005 | \$390,813 | | | | | | | | | |
| 38 | GREEN VALLEY DESERT HILLS NO. 2(1-613) | 4 | 4 | 3495.38 | 4570 | 1.307 | REPAIR/REPLACE | \$155,567 | | \$297,438 | \$546,380 | | | | | | | | | |
| 39 | GREEN VALLEY DESERT HILLS NO.5 (1-196) | 4 | 4 | 1925.45 | 1970 | 1.023 | REPAIR/REPLACE | \$89,854 | | \$207,584 | \$636,235 | | | | | | | | | |
| 40 | NEW TUCSON UNIT NO. 22 RESUB OF BLKS 2-3 | 4 | 4 | 640.10 | 350 | 0.547 | REPAIR/REPLACE | \$29,871 | | \$177,712 | \$666,106 | | | | | | | | | |
| 41 | MADERA VISTA(1-85) | 4 | 4 | 1936.87 | 910 | 0.470 | REPAIR/REPLACE | \$90,387 | | \$87,325 | \$756,493 | | | | | | | | | |
| 42 | GREEN VALLEY COUNTRY CLUB ESTATES RESUB | 4 | 4 | 816.01 | 380 | 0.466 | REPAIR/REPLACE | \$38,080 | | \$49,245 | \$794,573 | | | | | | | | | |
| 43 | MAGI ESTATE(1-20) | 4 | 4 | 528.75 | 200 | 0.378 | REPAIR/REPLACE | \$24,675 | | \$24,570 | \$819,248 | | | | | | | | | |
| 44 | JACS MEADOWS (1-10) | 4 | 3 | 339.70 | 100 | 0.294 | REPAIR/REPLACE | \$15,853 | | \$8,717 | \$835,101 | | | | | | | | | |
| | TOTAL OF DISTRICT 4 | | | | | | | \$835,101 | \$1,360 | \$7,357 | \$843,818 | | | | | | | | | |
| 45 | VISTA DE LA SIERRA DE DIOS (1-21) | 5 | 5 | 1632.60 | 210 | 0.129 | SEAL COAT | \$24,489 | | \$451,118 | \$24,489 | | | | | | | | | |
| 46 | CAMINO VERDE ESTATES(1-79) | 5 | 5 | 6526.80 | 810 | 0.124 | SEAL COAT | \$97,902 | | \$353,216 | \$122,391 | | | | | | | | | |
| 47 | PASEO MONTANA (1-25) | 5 | 5 | 2081.09 | 250 | 0.120 | SEAL COAT | \$31,216 | | \$321,999 | \$153,607 | | | | | | | | | |
| 48 | SAN XAVIER ESTATES (1-31) | 5 | 5 | 2723.74 | 310 | 0.114 | SEAL COAT | \$40,856 | | \$281,143 | \$194,463 | | | | | | | | | |
| 49 | VISTA DE LA SIERRA DE DIOS (22-83) | 5 | 5 | 5563.36 | 600 | 0.108 | SEAL COAT | \$83,450 | | \$197,693 | \$277,914 | | | | | | | | | |
| 50 | MISSION RIDGE (306-788) | 5 | 5 | 5482.68 | 560 | 0.102 | SEAL COAT | \$76,035 | | \$121,658 | \$353,948 | | | | | | | | | |
| 51 | SAN XAVIER ESTATES (32-76) | 5 | 5 | 5421.74 | 450 | 0.083 | SEAL COAT | \$81,326 | | \$40,332 | \$435,275 | | | | | | | | | |
| 52 | LAZY C RANCH ESTATES NO. 1 | 5 | 5 | 1347.16 | 60 | 0.045 | SEAL COAT | \$20,207 | | \$20,125 | \$455,482 | | | | | | | | | |
| 53 | PAINTED HILLS ESTATES (1-18) | 5 | 4 | 280.61 | 170 | 0.606 | REPAIR/REPLACE | \$13,095 | | \$7,030 | \$468,577 | | | | | | | | | |
| | TOTAL OF DISTRICT 5 | | | | | | | \$468,577 | | \$7,030 | \$475,607 | | | | | | | | | |
| | TOTAL OF ALL DISTRICTS | | | | | | | \$3,844,323 | | \$66,565 | \$3,912,248 | | | | | | | | | |