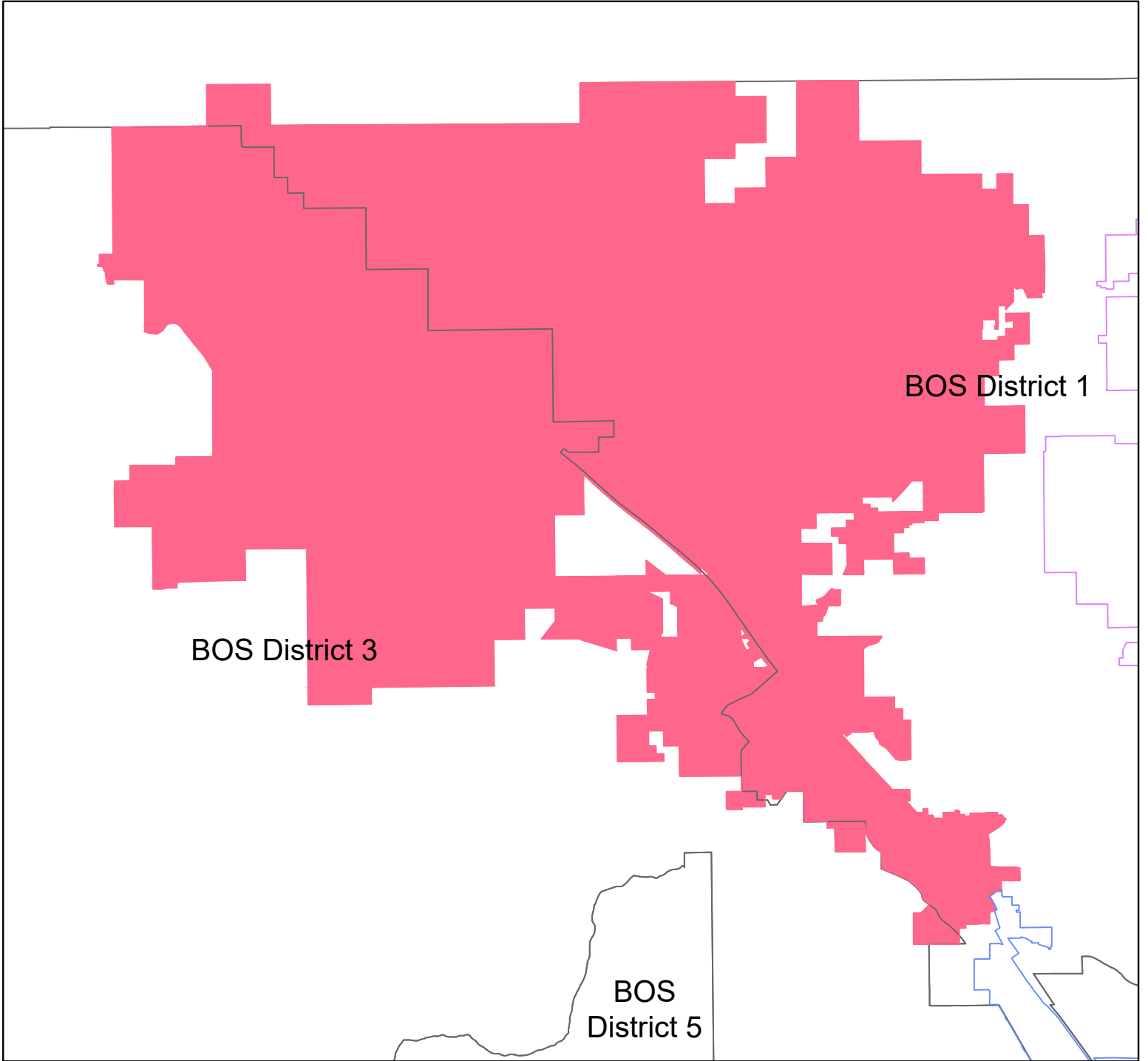


Marana Distribution



Year 1 - 17-18	Town of Marana	Year 2 - 18-19
Proposed Cost:	Base Tax	Proposed Cost:
D1: \$548,709	District 1: \$225,497	D1: \$548,709
D3: \$635,126	District 3: \$311,912	D3: \$635,126
Total: \$1,183,835	Accelerated Tax	Total: \$1,183,835
Delta: -\$1	Distribution: \$646,425*	Delta: -\$1
	Total: \$1,183,834	

*A proportionate share of the Accelerated Property Tax Road Repair Revenues has been removed to pay financing costs, see Map 2



Pavement Preservation Program

Regional Local Road Repair Program

September 26, 2017



Town of Marana Pavement Preservation Program Overview

- Employs a proactive maintenance philosophy
- Delay the rate of deterioration
- Reduce overall maintenance cost
- Improve pavement conditions over time
- Increase safety
- Higher customer satisfaction



Roadway Conditions and Treatments

- Marana's strategy to combat road deterioration begins with the Asset Management System (AMS). By recording factors including: age, observable pavement distresses, and the number, and the length of cracks: the computer software is able to assign each roadway an Overall Condition Index (OCI).
- Deterioration Factors
 - Weather
 - Chemicals
 - Wear
 - Time
- Treatment Types:
 - **Minor** (Fog Seal, Crack Seal, HA5, PMM)
 - **Moderate** (Chip Seal, Scrub Seal, Slurry Seal, Mill and Overlay)
- The Town's current overall average OCI is 74%.



2017-2018 Subdivisions Crack Sealant Treatment

District 1

- Willow Edge Commons
- Cortaro Ranch
- Hartman Ten
- Hartman Vista
- Countryside Ridge
- Sombra Del Tecolote
- Oasis Hills II
- The Pines Phase I
- Continental Ranch Parcel 7
- Continental Ranch Parcel 9
- Continental Ranch Parcel 10


District 3

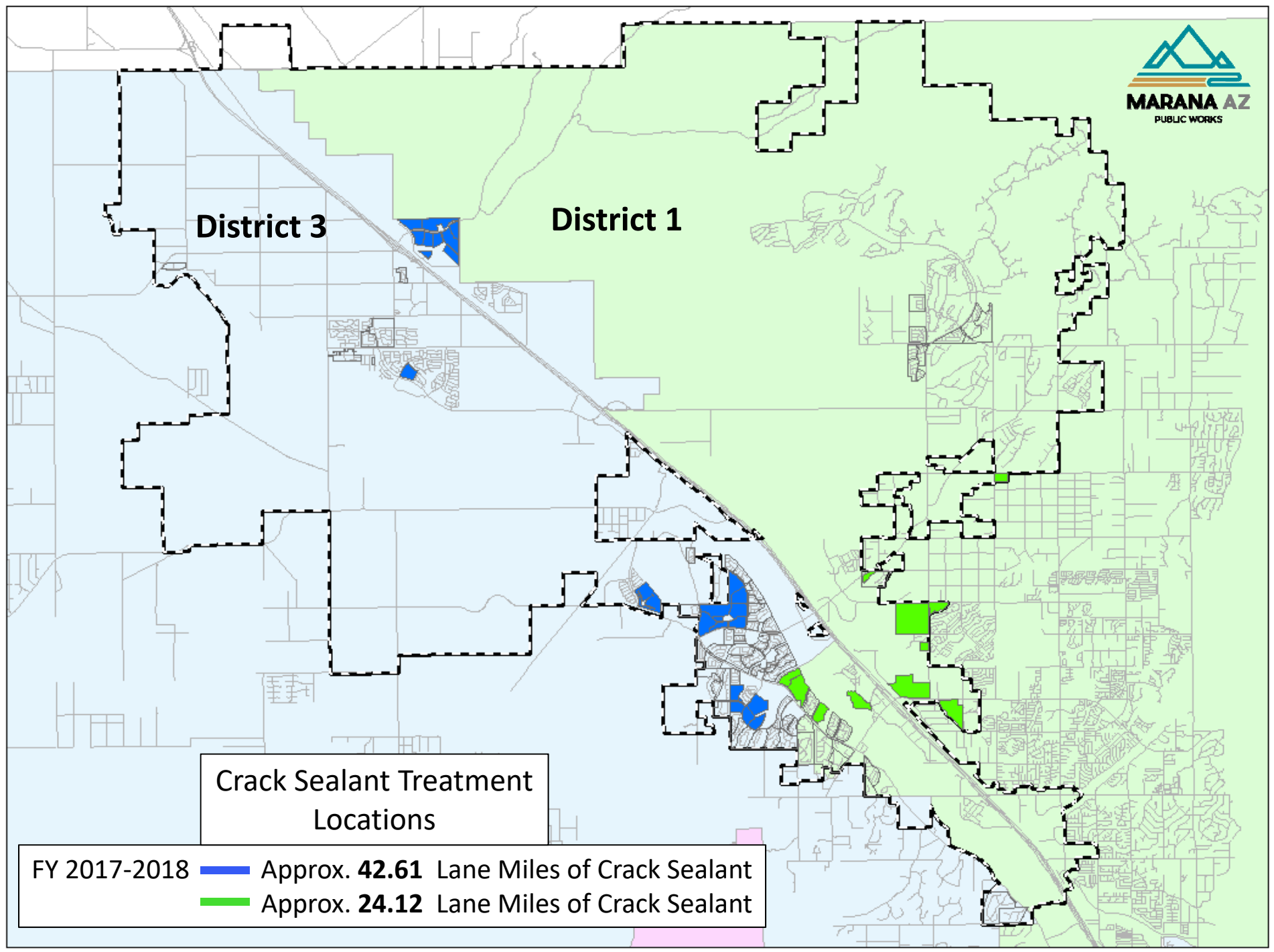
- Stone Ridge
- Continental Reserve Block 1&7,8,9
- San Lucas Subdivison
- Galdden Farms Block 9
- Parcel 11 Continental Ranch
- Marana Estates
- Sunflower Active Adult Community
- Saguaro Bloom Block 8B

District 3

District 1

Crack Sealant Treatment Locations

FY 2017-2018  Approx. **42.61** Lane Miles of Crack Sealant
 Approx. **24.12** Lane Miles of Crack Sealant





2018-2019 Scheduled Subdivisions Treatment

District 1

PMM

- Willow Edge Commons
- Cortaro Ranch
- Hartman Ten
- Hartman Vista
- Countryside Ridge
- Sombra Del Tecolote
- Oasis Hills II
- The Pines Phase I
- Continental Ranch Parcel 7
- Continental Ranch Parcel 9
- Continental Ranch Parcel 10
- Stone Ridge

District 3

PMM

- Continental Reserve Block 1&7,8,9
- San Lucas Subdivision
- Gladden Farms Block 9
- Parcel 11 Continental Ranch
- Sunflower Active Adult Community
- Saguaro Bloom Block 8B

Conventional Fog

- Continental Ranch Parcel 16
- Continental Ranch Parcel 17
- Continental Ranch Parcel 18




Rubberized Chip

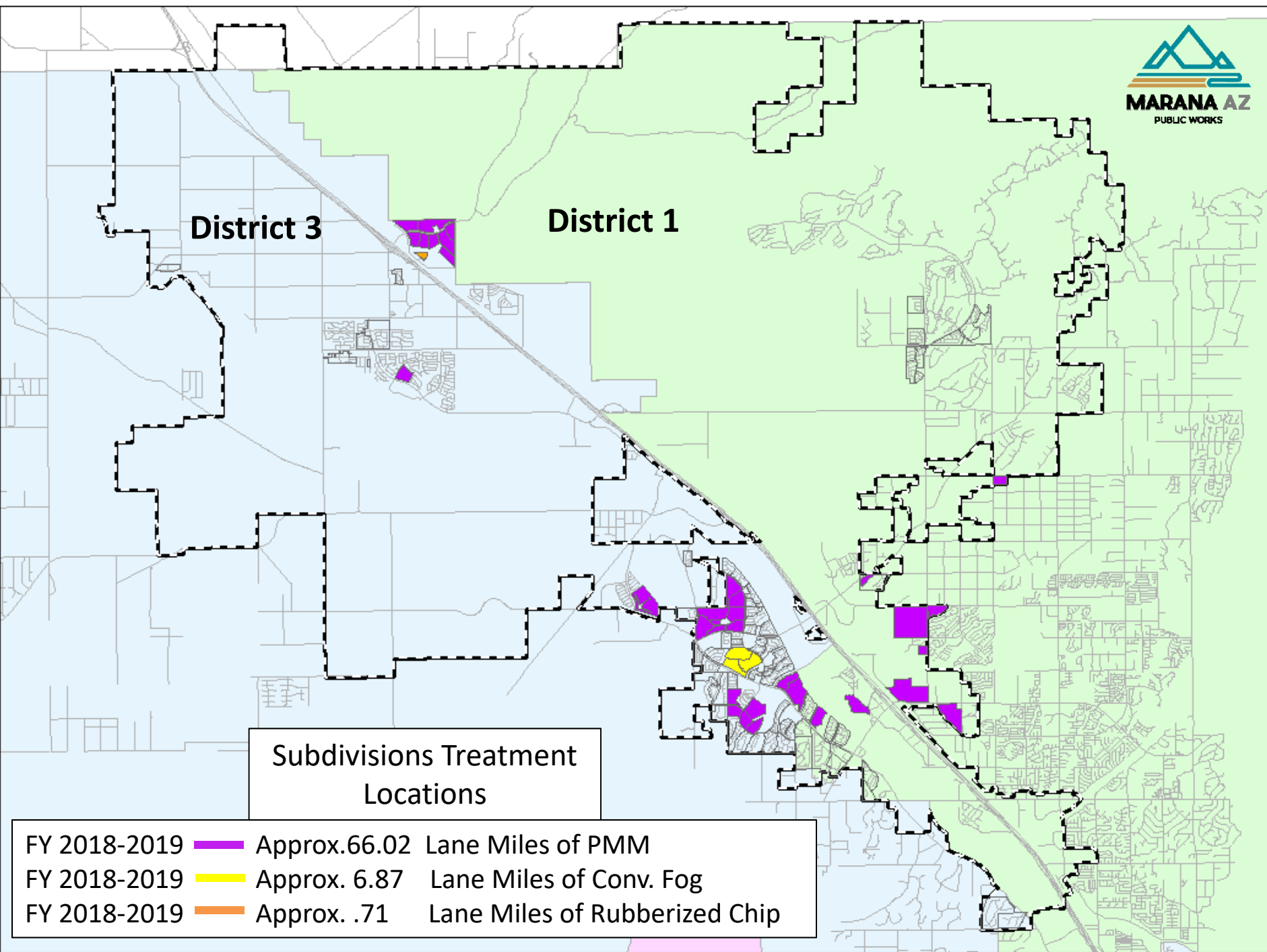
- Marana Estates

District 3

District 1

Subdivisions Treatment Locations

FY 2018-2019		Approx. 66.02	Lane Miles of PMM
FY 2018-2019		Approx. 6.87	Lane Miles of Conv. Fog
FY 2018-2019		Approx. .71	Lane Miles of Rubberized Chip





2018-2019 Subdivisions Crack Sealant Treatment

District 1

- The Villages at Dove Mountain
- Quail Crossing
- Bluffs at Dove Mountain
- Tortilla Reserve
- Parcel 8, 50, 51, 52C Continental Ranch

District 3

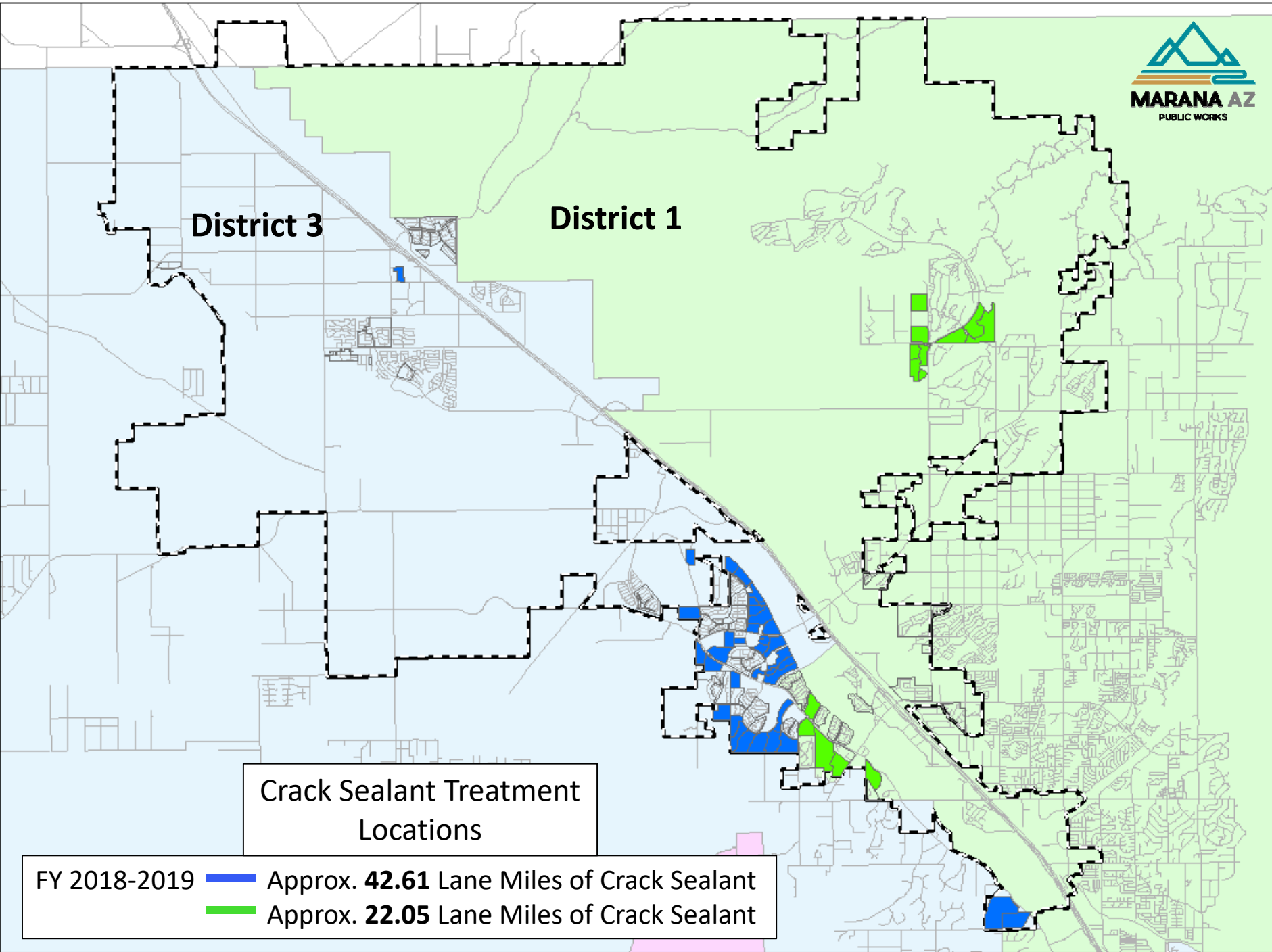
- Continental Ranch
- Continental Ranch Copper Moon
- Continental Ranch Parcel 15 The Villas
- Desert Traditions I, II
- Acacia Trails
- Cancion De La Luna
- El Rio At Continental Ranch
- Marana Vista
- Silverbell Hills Estates
- Los Morteros Estates
- Silver Moon
- Twin Peaks Highland
- Twin Peaks
- Sunset Ranch Estates
- Sunset Acres II
- Sonoran Moon

District 3

District 1

Crack Sealant Treatment Locations

- FY 2018-2019  Approx. **42.61** Lane Miles of Crack Sealant
-  Approx. **22.05** Lane Miles of Crack Sealant



Pima County Regional Local Road Project District 1 = (\$548,709) Marana Subdivisions

SUBDIVISION AREA	Lane Miles	Sq. Yds.	Avg. OCI	2017-2018	2018-2019	
WILLOW RIDGE COMMONS	2.74	29,208	84.59	Crack seal	\$40,307.00 Minor / PMM	
CORTARO RANCH	4.73	37,504	76.53	Crack seal	\$51,755.53 Minor / PMM	
HARTMAN TEN	0.19	2,027	82.43	Crack seal	\$2,796.80 Minor / PMM	
HARTMAN VISTAS	5.27	45,118	76.85	Crack seal	\$62,263.30 Minor / PMM	
COUNTRYSIDE RIDGE	1.25	45,118	76.85	Crack seal	\$15,018.07 Minor / PMM	
SOMBRA DEL TECOLOTE	0.33	3,307	82.28	Crack seal	\$4,563.81 Minor / PMM	
OASIS HILLS II	0.43	5,141	99.66	Crack seal	\$7,095.04 Minor / PMM	
THE VILLAGES AT DOVE MOUNTAIN	1.20	11,013	74.83		Crack seal	
THE VILLAGES AT REDHAWK	1.87	15,478	81.90		Crack seal	
THE VILLAGES III AT DOVE MOUNTAIN	1.90	14,462	83.26		Crack seal	
THE VILLAGES IV AT DOVE MOUNTAIN	0.55	5,724	96.57		Crack seal	
QUAIL CROSSING	2.77	24,182	93.11		Crack seal	
QUAIL CROSSING II	2.47	21,022	87.41		Crack seal	
BLUFFS AT DOVE MOUNTAIN	4.19	36,754	94.46		Crack seal	
TORTOLITA RESERVE	1.58	15,369	98.39		Crack seal	
SUBDIVISION AREA	Lane Miles	Sq. Yds.	Avg. OCI	2017-2018	2018-2019	
THE PINES PHASE I	2.08	21,287	80.26	Crack seal	\$25,544.28 Minor/PMM	
PARCEL 7 CONTINENTAL RANCH	1.77	17,696	80.10	Crack seal	\$21,235.18 Minor/PMM	
PARCEL 8 CONTINENTAL RANCH	2.37	25,552	98.66		Crack seal	
PARCEL 9 CONTINENTAL RANCH	3.79	40,311	98.04	Crack seal	\$48,373.32 Minor/PMM	
PARCEL 10 CONTINENTAL RANCH	1.81	18,788	79.07	Crack seal	\$22,545.06 Minor/PMM	
CONTINENTAL RANCH PARCEL 50	1.15	13,267	99.02		Crack seal	
CONTINENTAL RANCH PARCEL 51	4.30	33,515	97.14		Crack seal	
CONTINENTAL ESTATES PARCEL 52C	1.17	10,216	85.06		Crack seal	
				Minor Treatments	\$0.00	\$301,497.39
				Crack Seal/ Asphalt Failures	\$548,709.00	\$247,211.61
				Total	\$548,709.00	\$548,709.00

Pima County Regional Local Road Project District 3 = (\$635,126) Marana Subdivisions

SUBDIVISION AREA	Lane Miles	Sq. Yds.	Avg. OCI	2017-2018	2018-2019
SAN LUCAS BLOCK 2	1.88	19,622	86.55	Crack seal	\$27,078.97 Minor/PMM
SAN LUCAS BLOCKS 3-4	3.05	32,042	93.39	Crack seal	\$44,218.28 Minor/PMM
SAN LUCAS BLOCK 5	1.13	12,013	96.08	Crack seal	\$16,577.79 Minor/PMM
SAN LUCAS BLOCKS 6 (Lots 61 -115)	1.03	9,257	90.09	Crack seal	\$12,774.52 Minor/PMM
SAN LUCAS BLOCK 7	1.27	11,856	99.00	Crack seal	\$19,918.08 Minor/PMM
SAN LUCAS BLOCK 8	1.39	13,081	99.60	Crack seal	\$18,051.60 Minor/PMM
SAN LUCAS BLOCK 9	1.42	14,164	89.35	Crack seal	\$19,546.94 Minor/PMM
SAN LUCAS BLOCK 11	1.28	12,611	89.84	Crack seal	\$17,402.72 Minor/PMM
SAN LUCAS BLOCK 12	1.03	10,926	98.00	Crack seal	\$18,355.68 Minor/PMM
GLADDEN FARMS BLOCK 9	0.94	9,365	88.18	Crack seal	\$11,237.59
MARANA VISTA	1.36	8,873	54.92		Crack seal
MARANA ESTATES		5,204	64.28	Crack seal	\$24,843.68 Moderate Rub/Chip
SUNSET ACRES II	1.28	10,956	93.74		Crack seal
SILVERBELL HILLS ESTATES	3.43	26,184	81.74		Crack seal
SONORAN MOON	0.48	5,662	81.11		Crack seal
DESERT TRADITIONS I	1.05	9,689	64.74		Crack seal
DESERT TRADITIONS II	1.06	11,045	50.66		Crack seal
SUBDIVISION AREA	Lane Miles	Sq. Yds.	Avg. OCI	2017-2018	2018-2019
ACACIA TRAILS	0.58	5,483	75.76		Crack seal
CANCION DE LA LUNA	1.23	13,803	63.16		Crack seal
EL RIO AT CONTINENTAL RANCH	1.29	13,780	72.71		Crack seal
SONORAN VISTA	1.10	11,455	76.12		Crack seal
LOS MORTEROS ESTATES	0.86	6,045	68.91		Crack seal
SILVER MOON	1.71	13,314	69.44		Crack seal

Pima County Regional Local Road Project District 3 = (\$635,126) Marana Subdivisions

SUBDIVISION AREA	Lane Miles	Sq. Yds.	Avg. OCI	2017-2018	2018-2019
TWIN PEAKS HIGHLAND	1.62	14,452	87.05		Crack seal
TWIN PEAKS SUBDIVISION	1.39	10,382	74.39		Crack seal
SUNSET RANCH ESTATES	1.06	9,321	93.67		Crack seal
STONE RIDGE (1-76) & (1-71)	2.43	23,170	80.23	Crack seal	\$27,803.75 Minor/PMM
CONTINENTAL RESERVE BLOCK 1 & 7	1.09	11,442	77.58	Crack seal	\$13,729.86 Minor/PMM
CONTINENTAL RESERVE BLOCK 7 & 8	1.36	12,516	78.21	Crack seal	\$15,018.67 Minor/PMM
CONTINENTAL RESERVE BLOCK 9	2.45	21,664	86.73	Crack seal	\$25,997.08 Minor/PMM
CONTINENTAL RESERVE BLOCK 10	1.23	13,358	83.86		Crack seal
CONTINENTAL RESERVE BLOCK 12	1.20	12,336	85.71		Crack seal
CONTINENTAL RESERVE BLOCK 14	1.37	11,866	81.33		Crack seal
CONTINENTAL RESERVE BLOCK 15	1.35	12,301	78.57		Crack seal
CONTINENTAL RESERVE BLOCK 16A	2.15	20,859	83.86		Crack seal
CONTINENTAL RESERVE BLOCK 16B	1.72	17,347	94.30		Crack seal
CONTINENTAL RESERVE BLOCKS 17-19	1.47	13,354	84.84		Crack seal
PARCEL 11 CONTINENTAL RANCH	2.27	26,097	66.00		Crack Seal
CONTINENTAL RANCH PARCEL 12A	1.92	22,420	100.00		Crack seal
CONTINENTAL RANCH PARCEL 12B	2.35	24,879	98.01		Crack seal
CONTINENTAL RANCH PARCEL 15 THE VILLAS	0.83	9,551	89.44		Crack seal
CONTINENTAL RANCH PARCEL 16	2.61	27,228	43.52		\$13,028.81 CQS Fog
CONTINENTAL RANCH PARCEL 17	1.83	17,880	48.80		\$8,555.58 CQS Fog
CONTINENTAL RANCH PARCEL 18	2.44	24,224	49.97		\$11,591.07 CQS Fog

Pima County Regional Local Road Project District 3 = (\$635,126) Marana Subdivisions

SUBDIVISION AREA	Lane Miles	Sq. Yds.	Avg. OCI	2017-2018	2018-2019
SUBDIVISION AREA	Lane Miles	Sq. Yds.	Avg. OCI	2017-2018	2018-2019
PARCEL 23 CONTINENTAL RANCH	1.23	11,758	46.01		Crack seal
PARCEL 26 CONTINENTAL RANCH	0.49	6,681	100.00		Crack seal
CONTINENTAL RANCH PARCEL 27A	0.99	10,456	47.91		Crack seal
CONTINENTAL RANCH PARCEL 27B	2.44	25,803	51.10		Crack seal
PARCEL 28 CONTINENTAL RANCH	1.92	18,261	100.00		Crack seal
CONTINENTAL RANCH PARCELS 38 & 40	1.54	16,124	60.86		Crack seal
CONTINENTAL RANCH PAR(36-38,40) PHASE II	1.54	17,263	53.94		Crack seal
CONTINENTAL RANCH PHASE III PAR. 36-38,40	1.67	16,293	44.27		Crack seal
CONTINENTAL RANCH COPPER MOON	1.94	21,085	67.49		Crack seal
CONTINENTAL RANCH ACTIVE ADULT COMMUNITY	2.85	21,872	79.29	Crack seal	\$26,245.87 Minor/PMM
CONTINENTAL RANCH SUNFLOWER PHASE II	2.06	20,463	78.69	Crack seal	\$24,555.07 Minor/PMM
CONTINENTAL RANCH SUNFLOWER PHASE III	3.23	25,575	79.04	Crack seal	\$30,690.26 Minor/PMM
CONTINENTAL RANCH SUNFLOWER PHASE IV	1.31	36,749	78.06	Crack seal	\$44,098.64 Minor/PMM
CONTINENTAL RANCH SUNFLOWER PHASE V	2.44	22,528	81.32	Crack seal	\$27,034.13 Minor/PMM
CONTINENTAL RANCH SUNFLOWER PHASE VI	2.20	17,460	81.09	Crack seal	\$20,951.60 Minor/PMM
CONTINENTAL RANCH SUNFLOWER PHASE VII	1.56	15,851	53.51	Crack seal	\$19,021.33 Minor/PMM
SAGUARO BLOOM BLOCK 8B	5.72	44,238	98.63	Crack seal	\$53,085.88 Minor/PMM
			Minor Treatments	\$0.00	\$591,413.46
			Crack Seal/ Asphalt Failures	\$635,126.00	\$43,712.54
			Total	\$635,126.00	\$635,126.00