



Pima County Long-Term Care/Assisted Living Facility Report

03/01/2020-7/20/2021

	Cases	Hospitalized	Deaths
Total (Pima County Wide)	119094	7467	2455
Long-Term Care Total	3771 (3% of County Wide)	542 (7% of County Wide)	542 (22% of County Wide)
Among Residents	2187	495	541
Among Staff	1478	46	1
Unknown	106	1	0

Chart 1. LTCF vs. Non-LTCF COVID-19 Cases by MMWR Week

LTCF vs. Non-LTCF COVID-19 Cases by MMWR Week

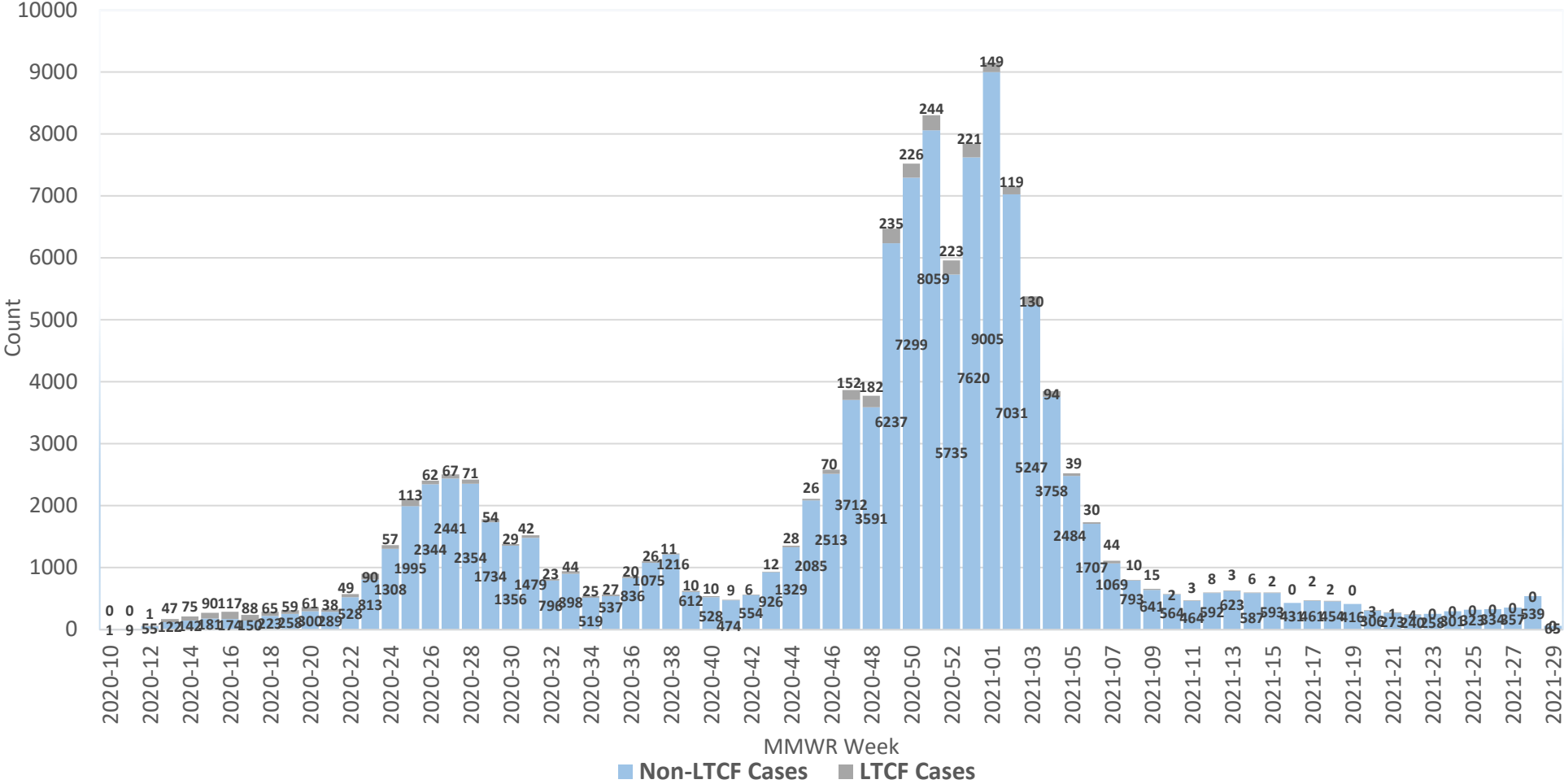
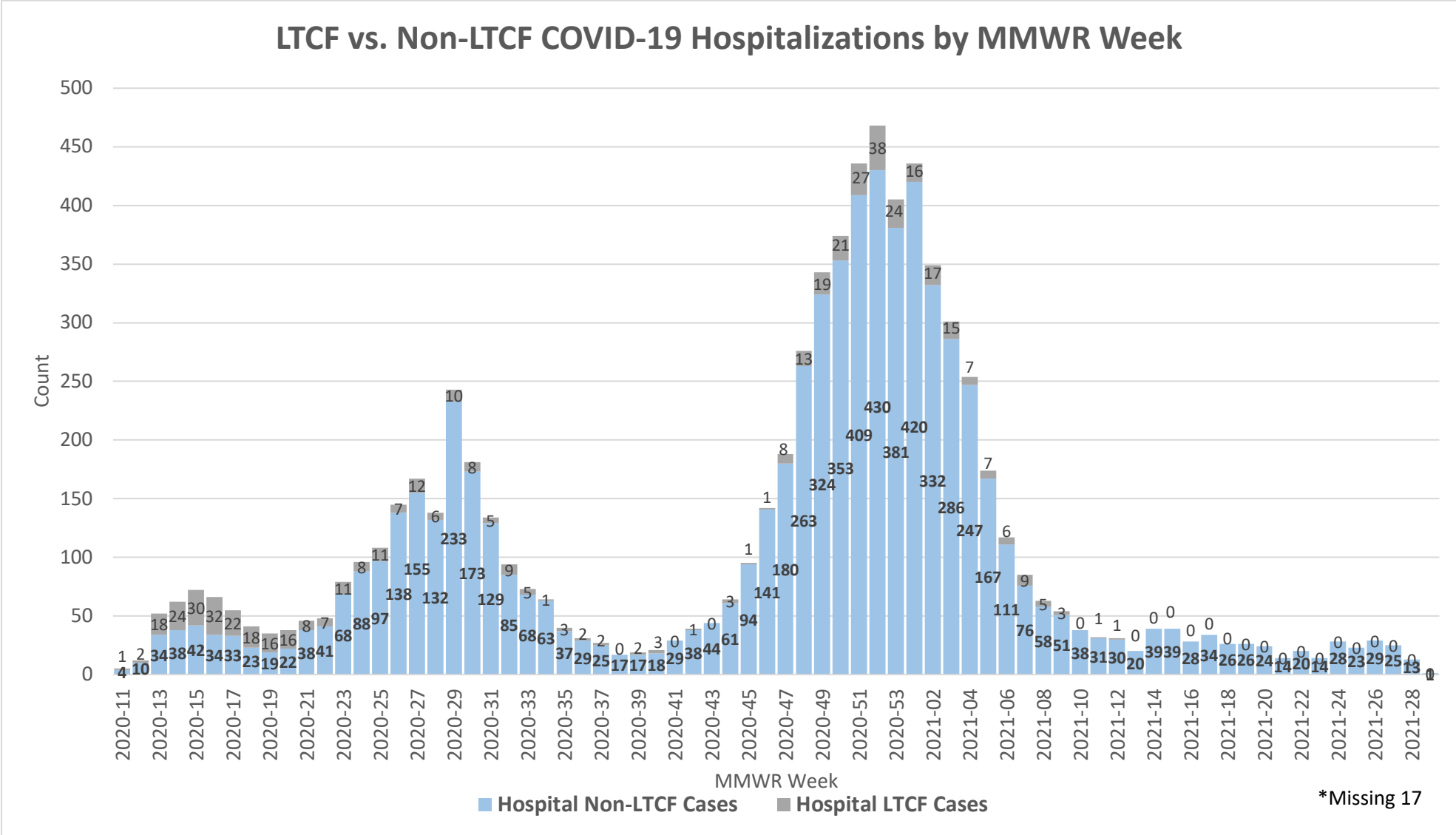


Chart 2. LTCF vs. Non-LTCF COVID-19 Hospitalizations by MMWR Week



**Note: Recent hospitalizations may not be reported yet.

Chart 3. LTCF vs. Non-LTCF COVID-19 Deaths by MMWR Week

