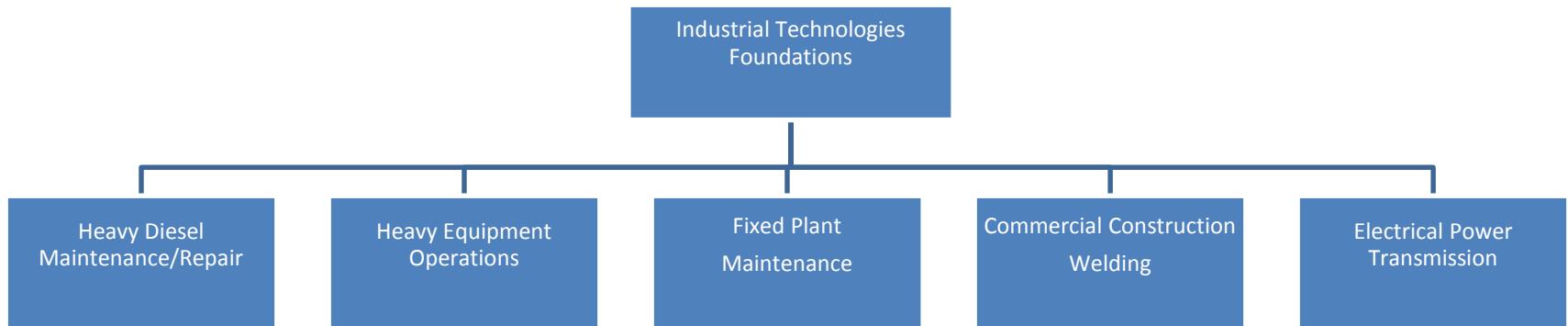


INDUSTRIAL TECHNOLOGIES EDUCATIONAL PATHWAY

1. To create a regional, state of the art mining and industrial technologies training facility that meets the workforce needs by bringing more students into the pipeline as well as provide opportunities for incumbent worker training.
2. Utilize strategic partnerships to maximize resources and expand usage.
3. Develop a clear pathway from high school to postsecondary education and into the workforce.



INDUSTRIAL TECHNOLOGIES EDUCATIONAL PATHWAY

- Part of a larger regional plan
 - High Schools around the county can utilize the Foundations curriculum.
 - Students feed into the regional training facilities or stay at their high school
 - Coordinate curriculum development
 - Align with industry needs
 - Co-locate with PCC and the OneStop to offer continued training and maximize resource use
 - Establish internship to employment opportunities